



Approximate
Acreage:
9,023



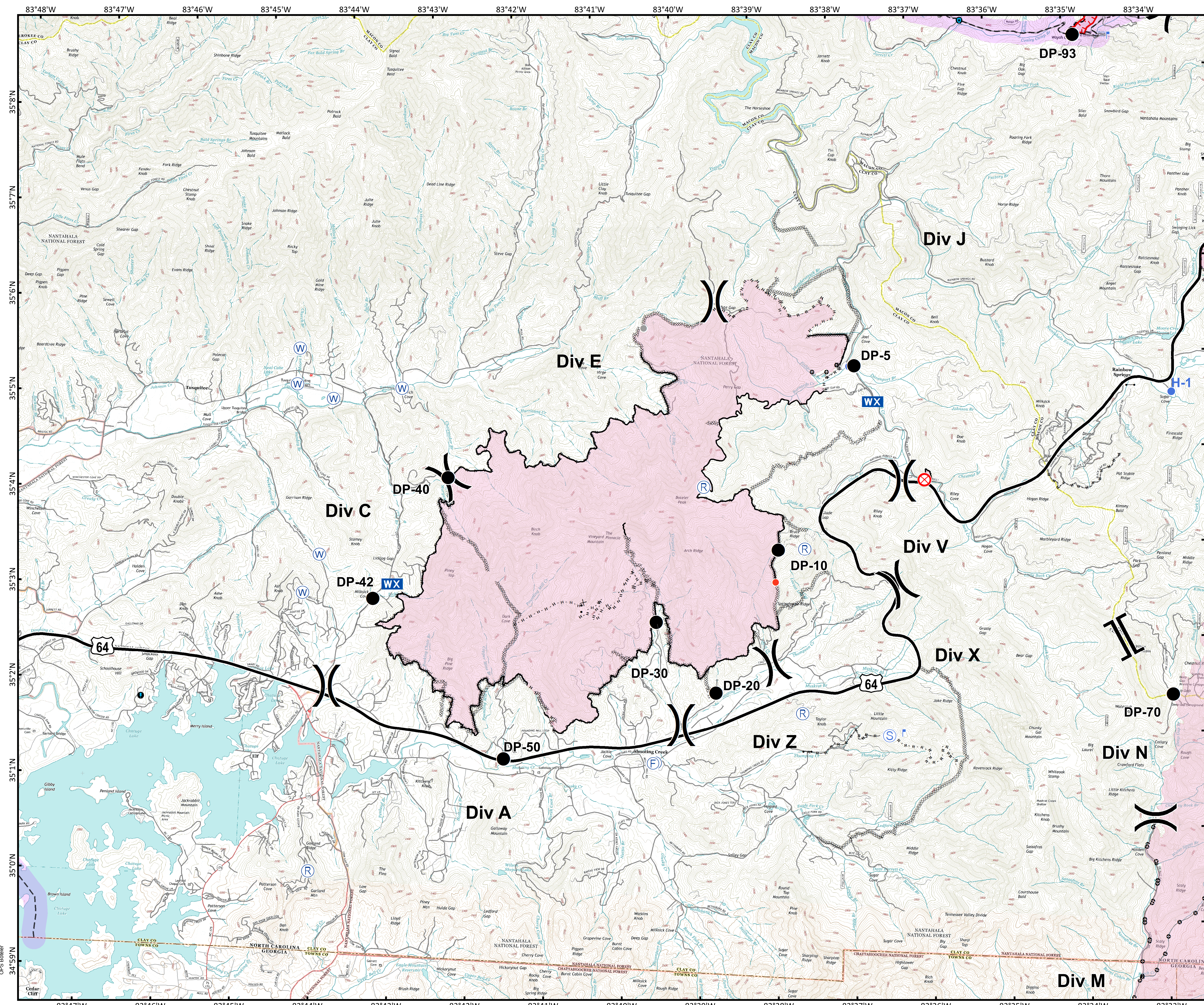
- Drop Point
- ⊗ Fire Origin
- Ⓡ Fire Station
- Gate
- Helispot
- Hot Spot
- Ⓡ Lookout
- WX Mobile Weather Unit
- Ⓡ Repeater
- Ⓢ Staging Area
- Ⓢ Water Source
- Other
- ⌋ Division Break
- ⌋ Branch Break
- Misc
- Ⓢ Road Guard
- Uncontrolled Fire Edge
- Completed Line
- Road as Completed Line
- Completed Dozer Line
- Hand Line
- Proposed Dozer Line
- Planned Fire Line
- Other
- Trail of Tears



0 0.3 0.6 1.2
Miles

Information shown is based on the best available data at the time of map production.

Datum: North American 1983
Units: Foot US
Author: Blue Team GIS



OPS Boteler