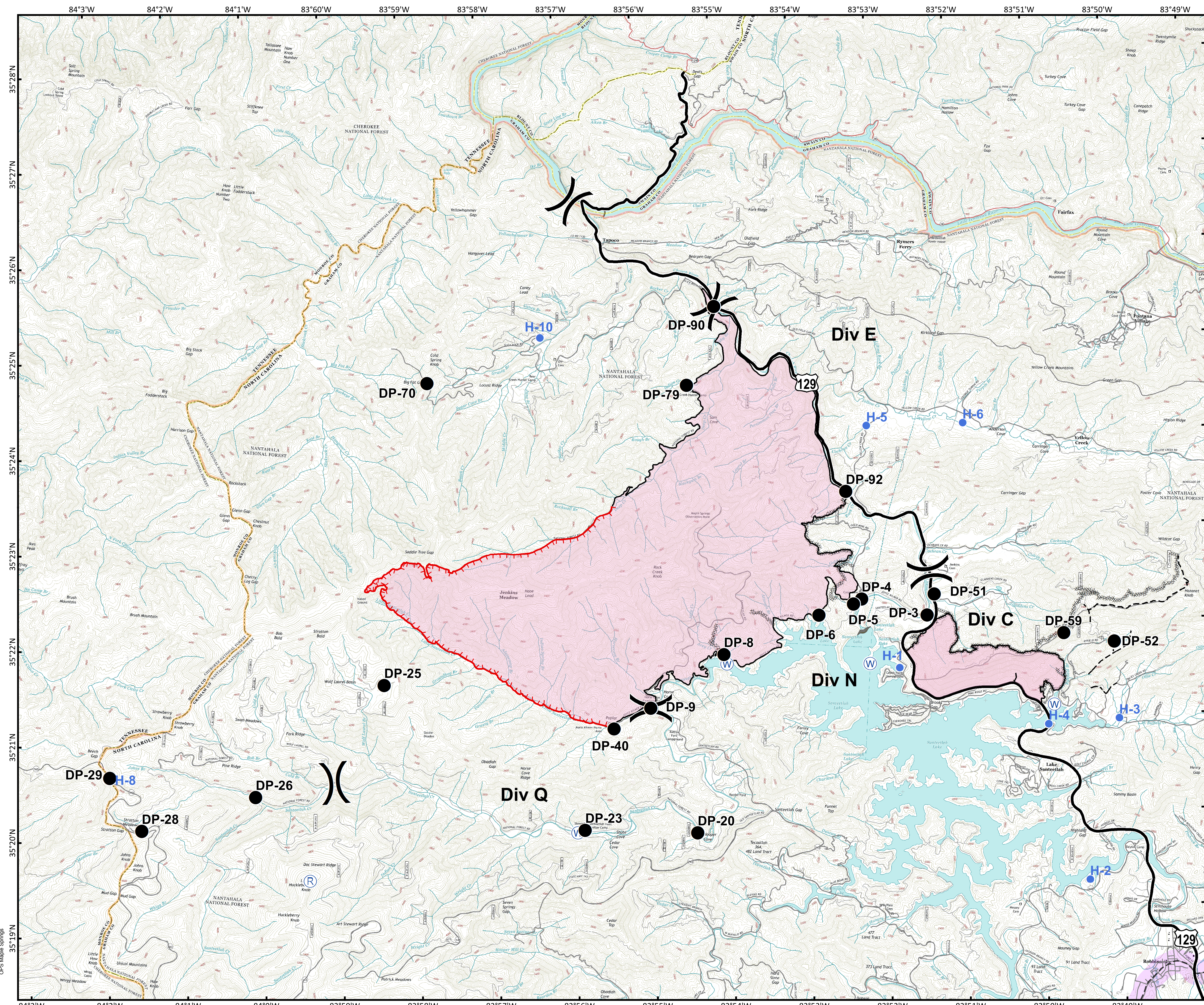




Approximate
Acreage:
7,779



- Drop Point
- Helispot
- Ⓡ Repeater
- Ⓜ Water Source
- ⎓ Division Break

- Uncontrolled Fire Edge
- Completed Line
- Completed Dozer Line
- - - - Hand Line
- Planned Fire Line
- - - - Trail of Tears

Download a GeoPDF



0 0.3 0.6 1.2 Miles

Information shown is based on the best available data at the time of map production.

Datum: North American 1983
Units: Foot US
Author: Blue Team GIS