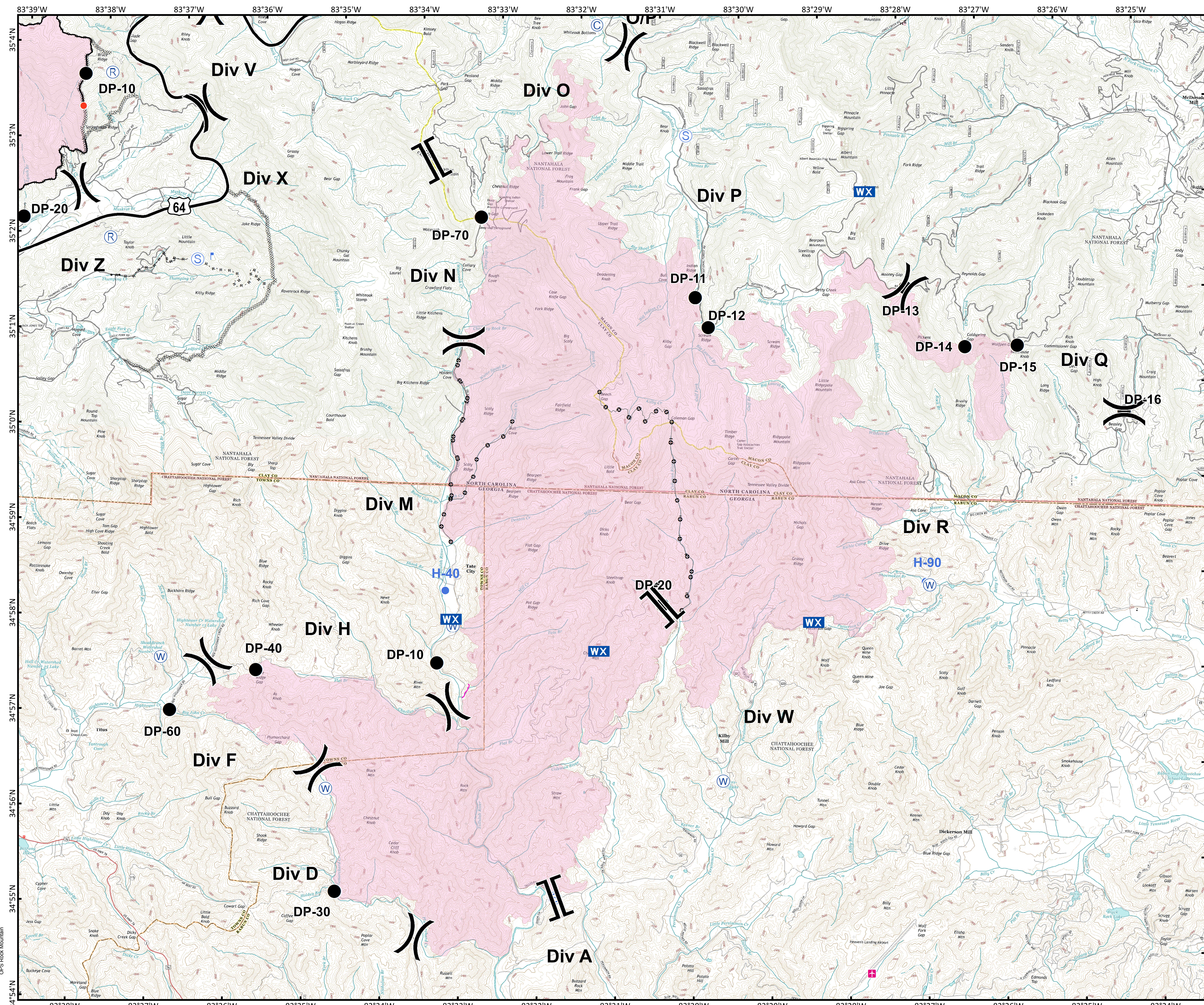




Approximate
Acreage:
22,355



- Airstrip or Airport
- Camp
- Drop Point
- Gate
- Helispot
- Hot Spot
- Lookout
- Mobile Weather Unit
- Repeater
- Staging Area
- Water Source
- Division Break
- Branch Break
- Completed Line
- Road as Completed Line
- Completed Dozer Line
- Hand Line
- Other
- Unknown

Download a GeoPDF



0 0.3 0.6 1.2
Miles

Information shown is based on the best available data at the time of map production.

Datum: North American 1983
Units: Foot US
Author: Blue Team GIS