

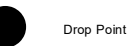
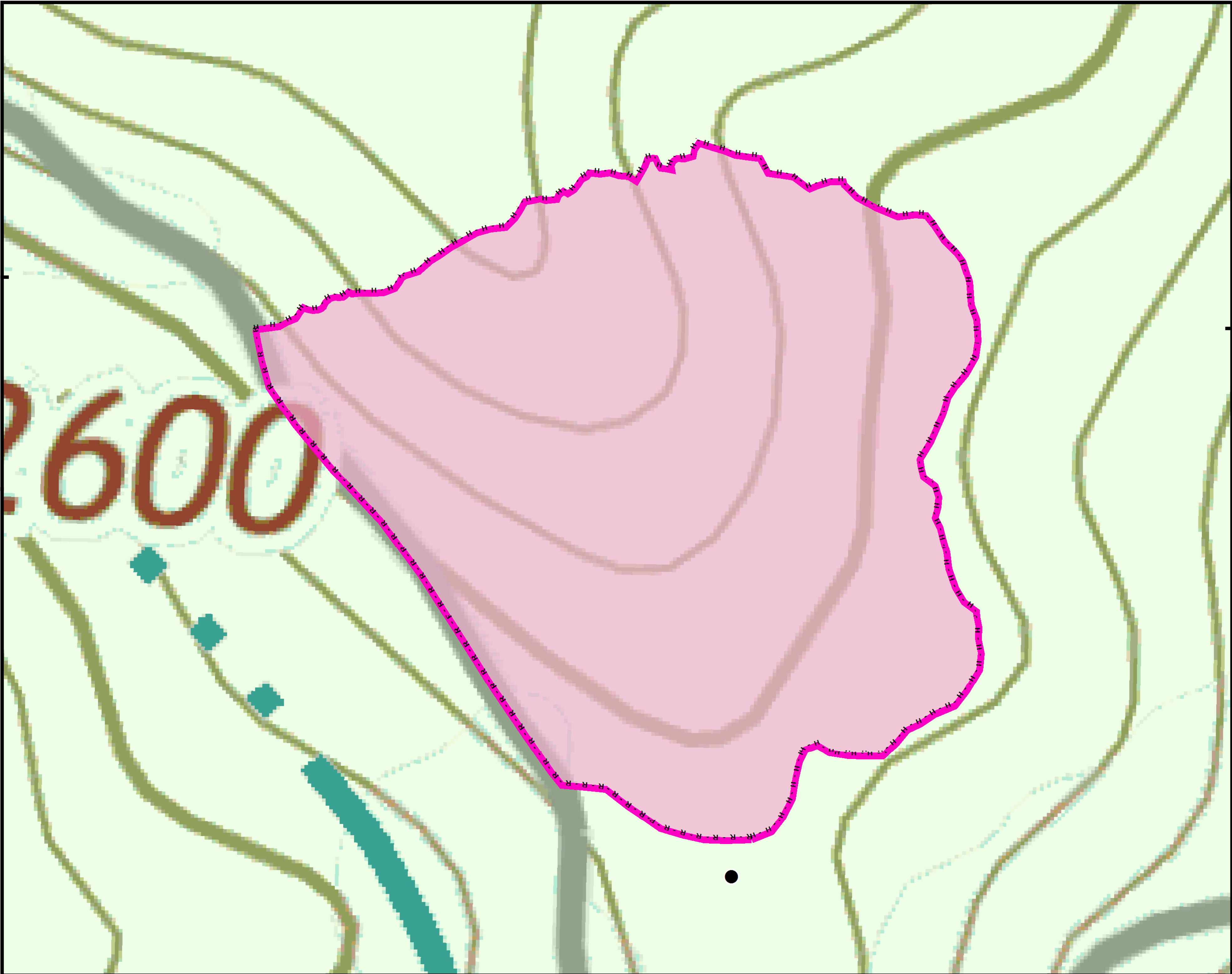


Approximate
Acreage:
6

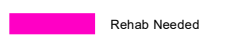


35°1'N

35°1'N



Drop Point



Rehab Needed

R - R - Road as Completed Line

H - H - Hand Line



0 0.0048.009 0.018
Miles

Information shown is based on the best available data at the time of map production.

Datum: North American 1983
Units: Foot US
Author: Blue Team GIS