

83°36'W

83°35'W

83°34'W

83°33'W

83°32'W

83°31'W

35°12'N

35°11'N

35°10'N

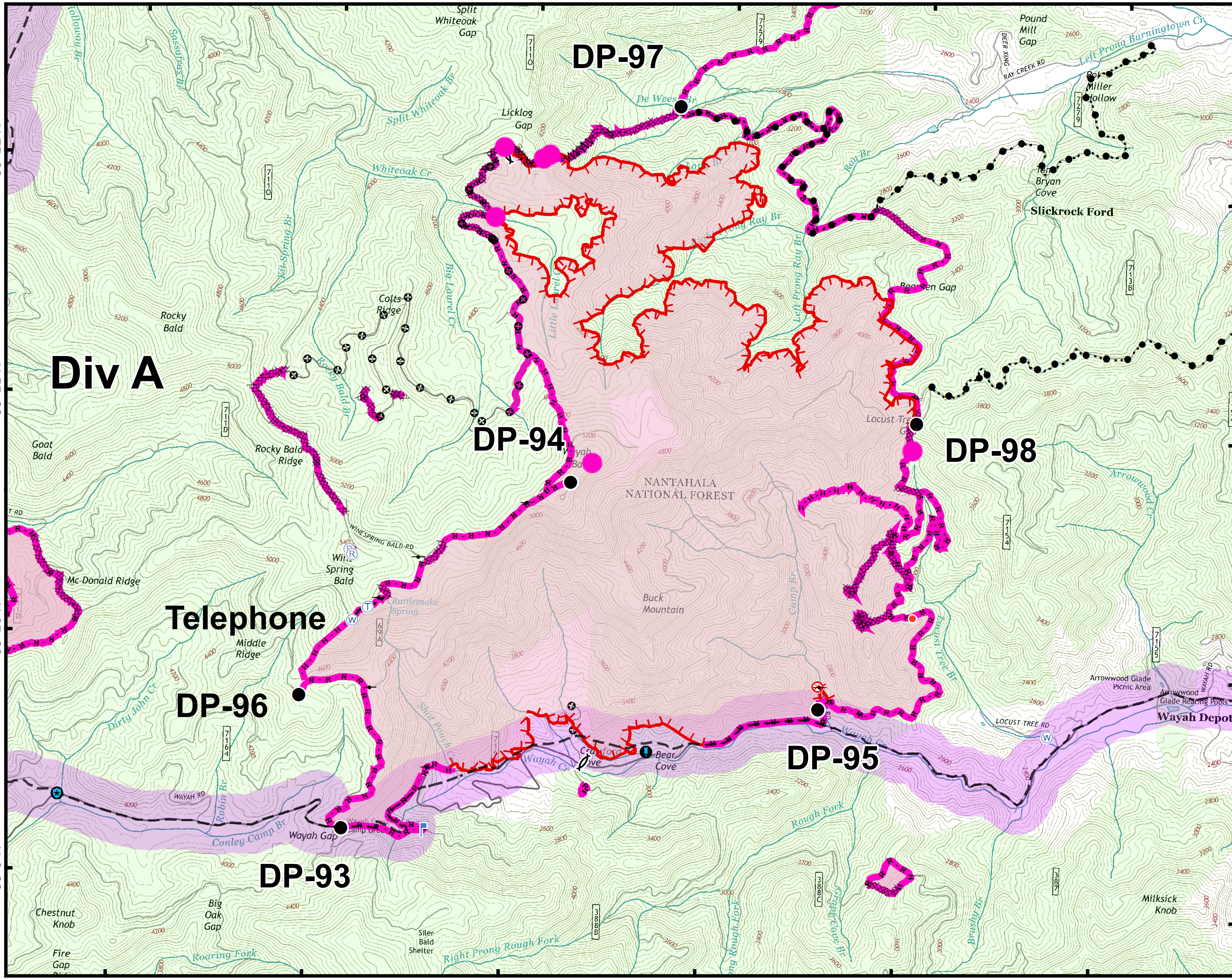
35°9'N

35°12'N

35°11'N

35°10'N

35°9'N



Approximate
Acreage:
3210



- Rehab Needed
- Misc
- Road Guard
- Drop Point
- Fire Origin
- Gate
- Hot Spot
- Lookout
- Repeater
- Telephone
- Water Source
- Other
- Division Break
- Rehab Needed
- Uncontrolled Fire Edge
- R - R - Road as Completed Line
- Line Break Completed
- Completed Dozer Line
- H - H - Hand Line
- Planned Fire Line
- Highlighted Manmade Feature
- Other
- Trail of Tears
- Trail of Tears Protection Area



0 0.1250.25 0.5
Miles

Information shown is based on the best available data at the time of map production.

Datum: North American 1983
Units: Foot US
Author: Blue Team GIS