

Information Containment


Maple Springs



11/30/2016

Approximate
Acreage:
7,779



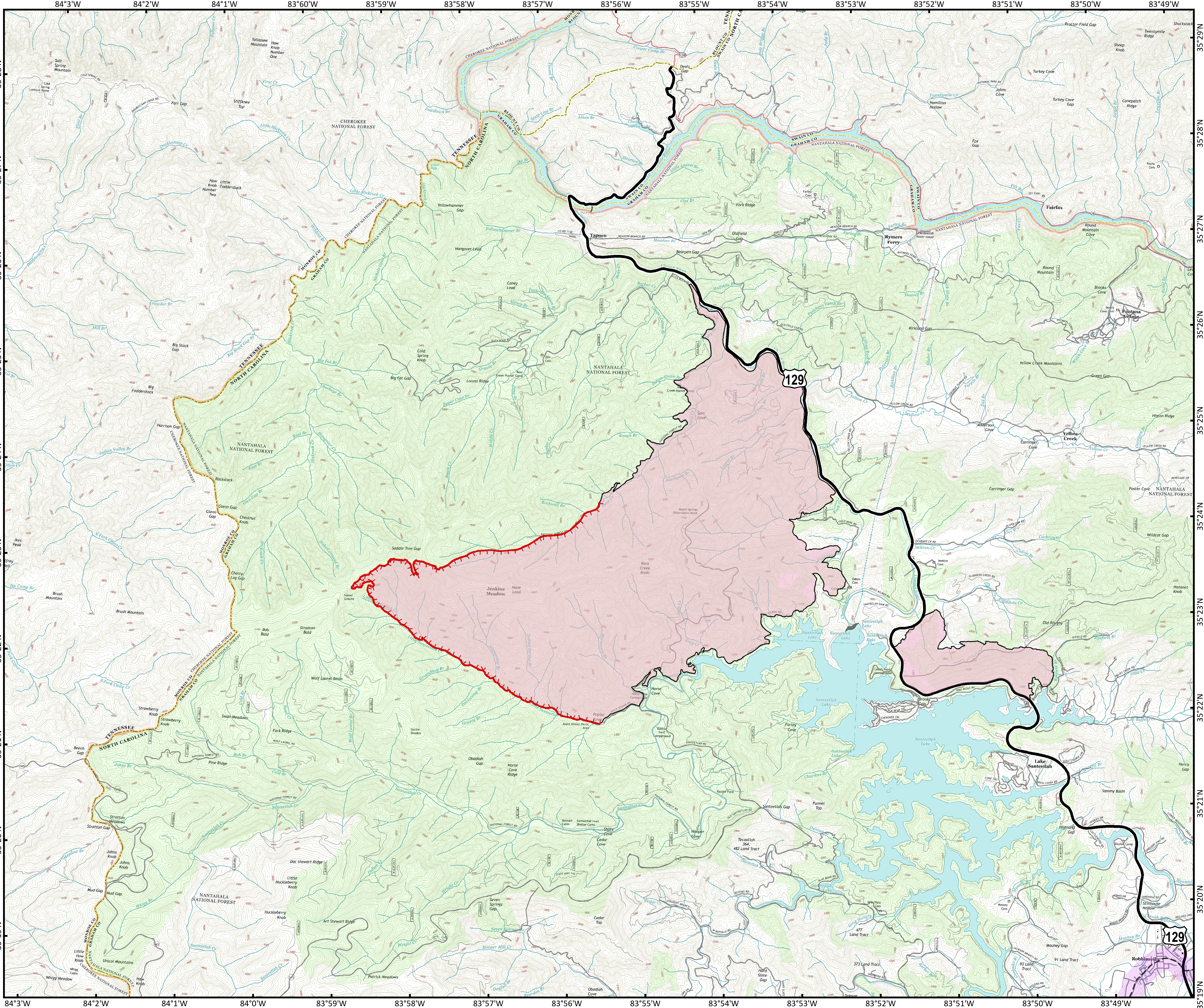
Completed Line  Uncontrolled Fire Edge



0 0.3 0.6 1.2
Miles

Information shown is based on the best available data at the time of map production.

Datum: North American 1983
Units: Foot US
Author: Blue Team GIS



Information Maple Springs
PO: 20161130_NC037_Fire_E