

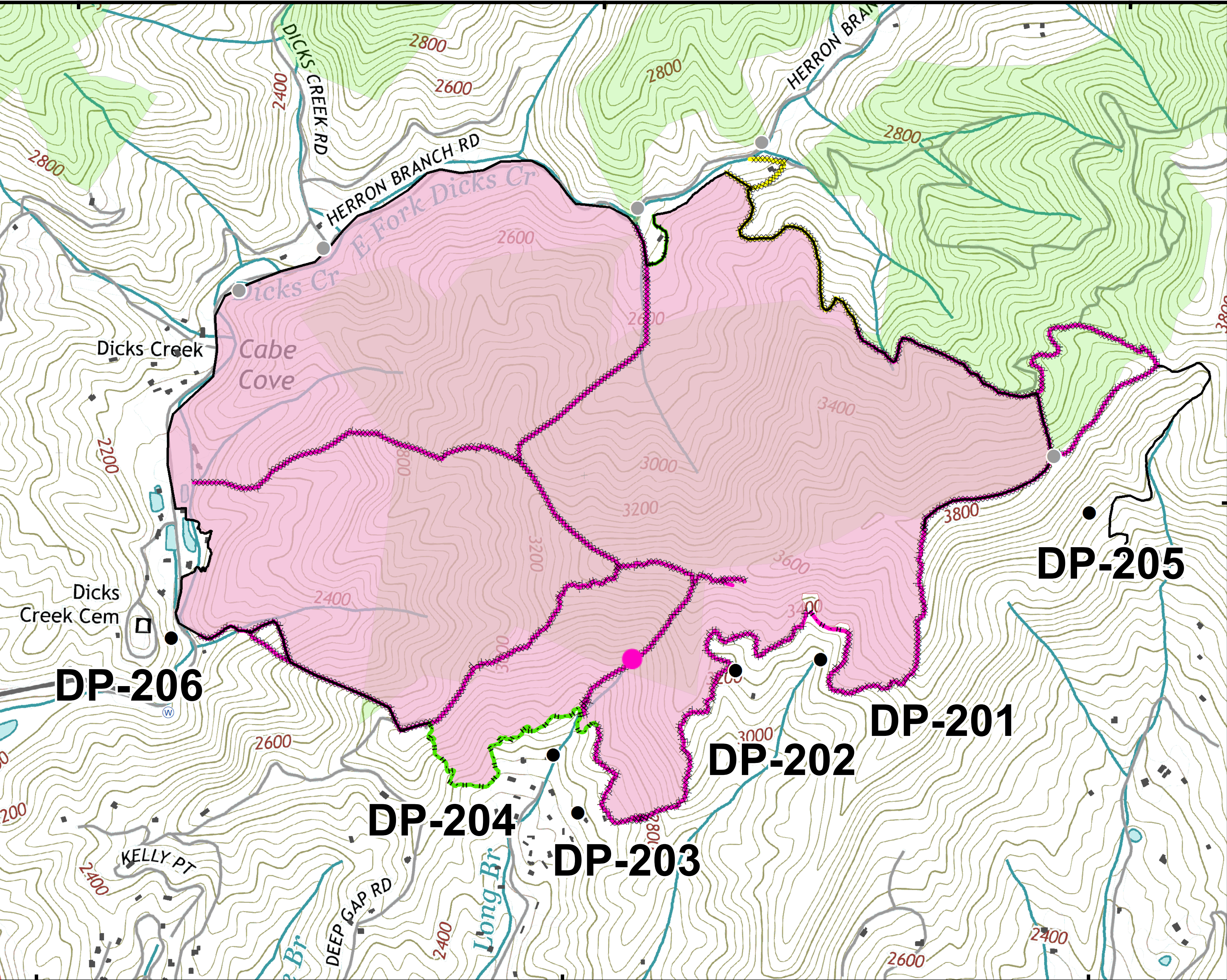
83°16'W

83°15'W

83°14'W

35°24'N

35°24'N



Approximate
Acreage:
729



- Rehab. Needed
- Drop Point
- Water Source
- Other
- Structure
- None needed
- Repair complete
- Repair needed



0 0.0450.09 0.18
Miles

Information shown is based on the best available data at the time of map production.

Datum: North American 1983
Units: Foot US
Author: Blue Team GIS

Suppression Repair - Dicks Creek