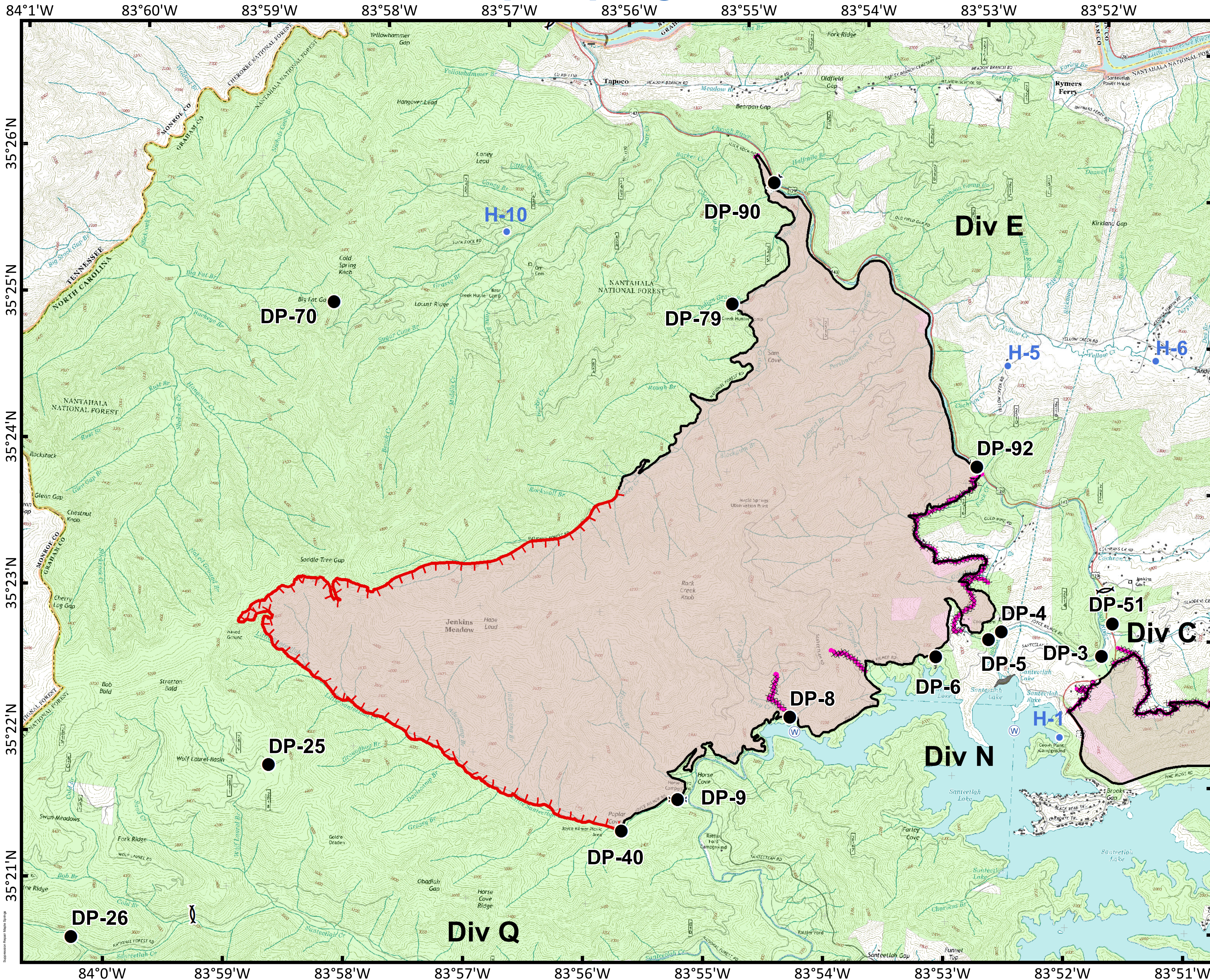


# Suppression Repair

# Maple Springs - Branch I

NC-NCF-160295

11/30/2016  
Day Shift



Approximate  
Acreage:  
7779



- Drop Point
- Helispot
- W Water Source
- Division Break
- Structure
- Repair needed



0 0.175.35 0.7  
Miles

Information shown is based on the best available data at the time of map production.

Datum: North American 1983  
Units: Foot US  
Author: Blue Team GIS