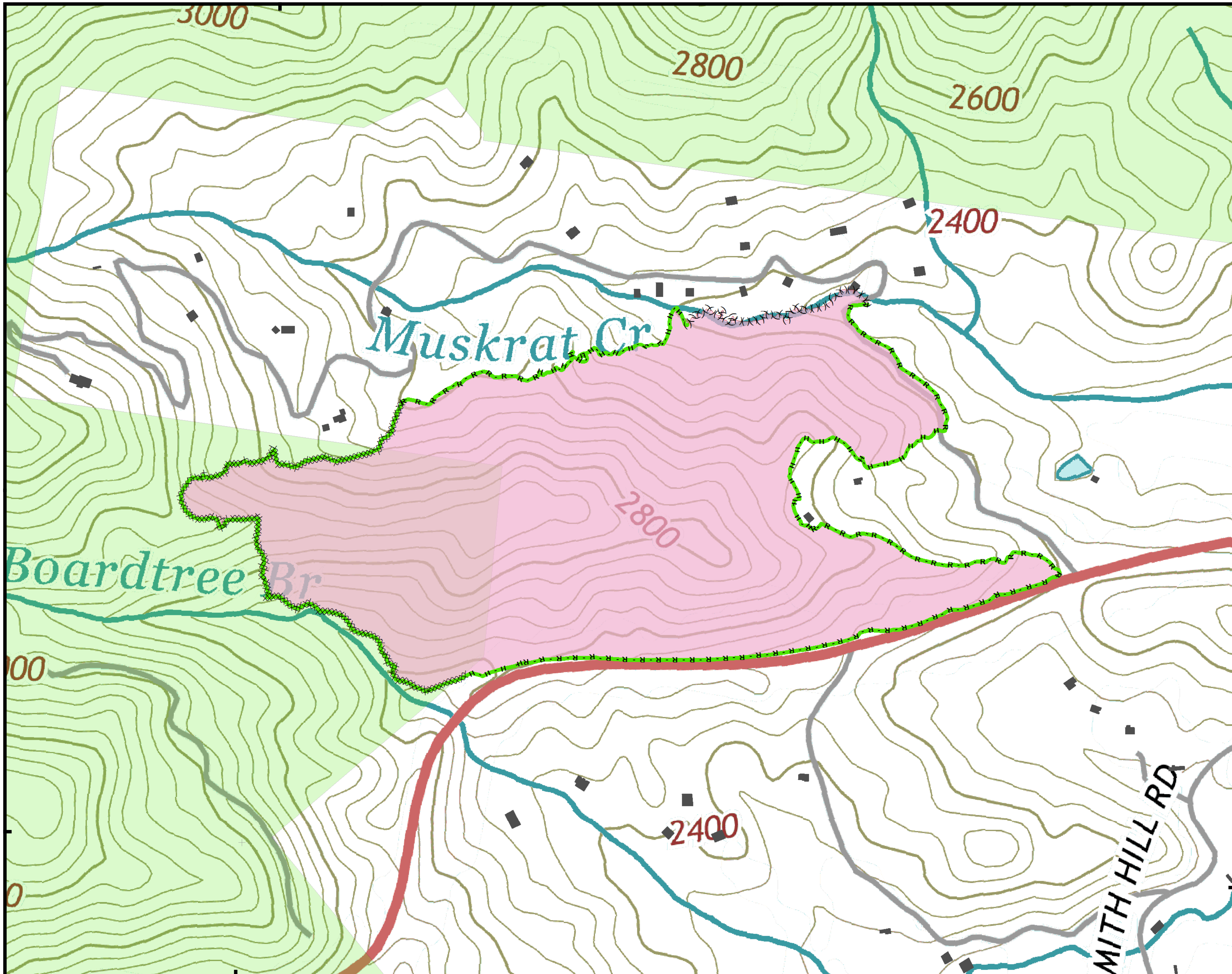


83°31'W



Approximate
Acreage:
104



- Structure
- Repair complete



0 0.0225 0.045 0.09
Miles

Information shown is based on the best available data at the time of map production.

Datum: North American 1983
Units: Foot US
Author: Blue Team GIS

35°8'N

Suppression Repair - Muskrat

83°31'W

35°8'N