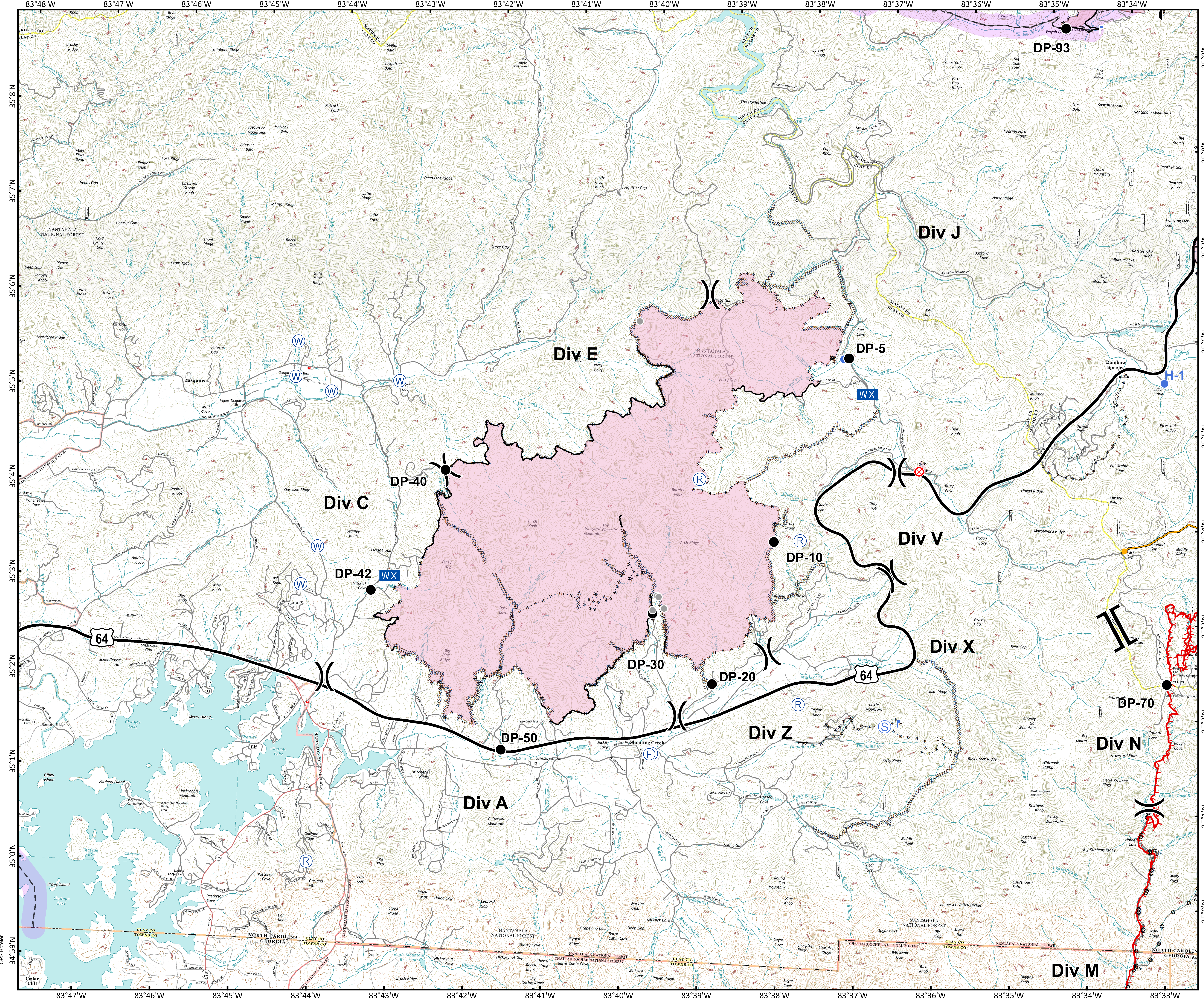




Approximate Acreage:
9,023



- Drop Point
- ⊗ Fire Origin
- F Fire Station
- Gate
- L Lookout
- WX Mobile Weather Unit
- R Repeater
- S Staging Area
- W Water Source
- Other
- X Division Break
- || Branch Break
- - - Uncontrolled Fire Edge
- Completed Line
- - - Road as Completed Line
- ⋯ Completed Dozer Line
- - - Hand Line
- Management Action Point
- Other
- - - Trail of Tears

Download a GeoPDF



0 0.3 0.6 1.2 Miles

Information shown is based on the best available data at the time of map production.

Datum: North American 1983
Units: Foot US
Author: Blue Team GIS

OPS Boteler