



Approximate Acreage:
3,422



- Drop Point
- ⊗ Fire Origin
- Gate
- Helispot
- Hot Spot
- ▣ Incident Command Post
- └ Lookout
- WX Mobile Weather Unit
- Ⓡ Repeater
- Ⓢ Spot Fire
- Ⓣ Staging Area
- Ⓜ Telephone
- Ⓦ Water Source
- Other
-) Division Break
- ▬ Uncontrolled Fire Edge
- ▬ Completed Line
- R-R-R-R Road as Completed Line
- ▬▬▬▬▬▬ Line Break Completed
- ⊗⊗⊗⊗⊗⊗ Completed Dozer Line
- H-H-H-H Hand Line
- - - - - Planned Fire Line
- Highlighted Manmade Feature
- ⊖⊖⊖⊖⊖ Ridge/Geographic Feature
- Other
- - - - - Trail of Tears

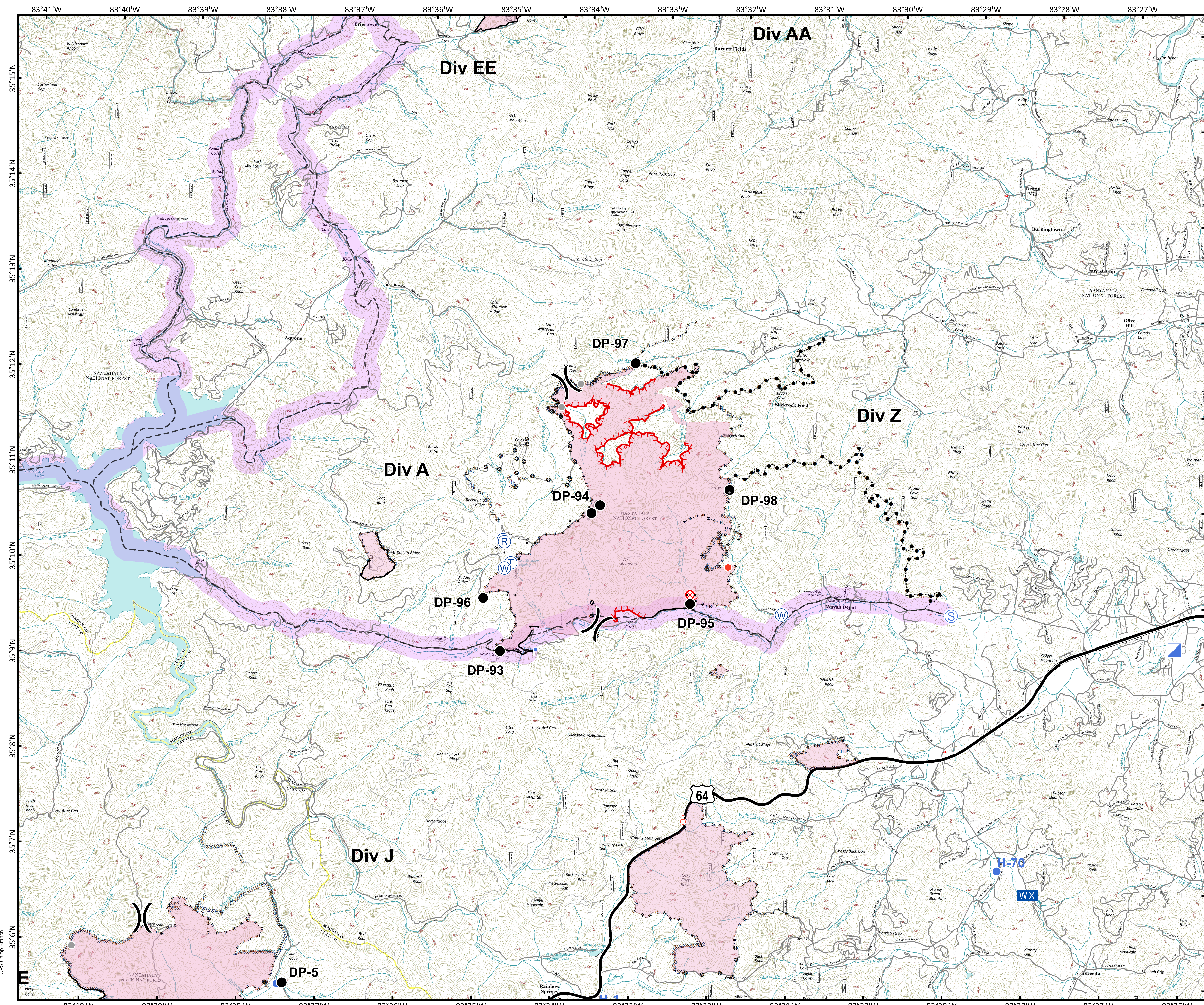
Download a GeoPDF



0 0.3 0.6 1.2 Miles

Information shown is based on the best available data at the time of map production.

Datum: North American 1983
Units: Foot US
Author: Blue Team GIS



OPS Camp Branch