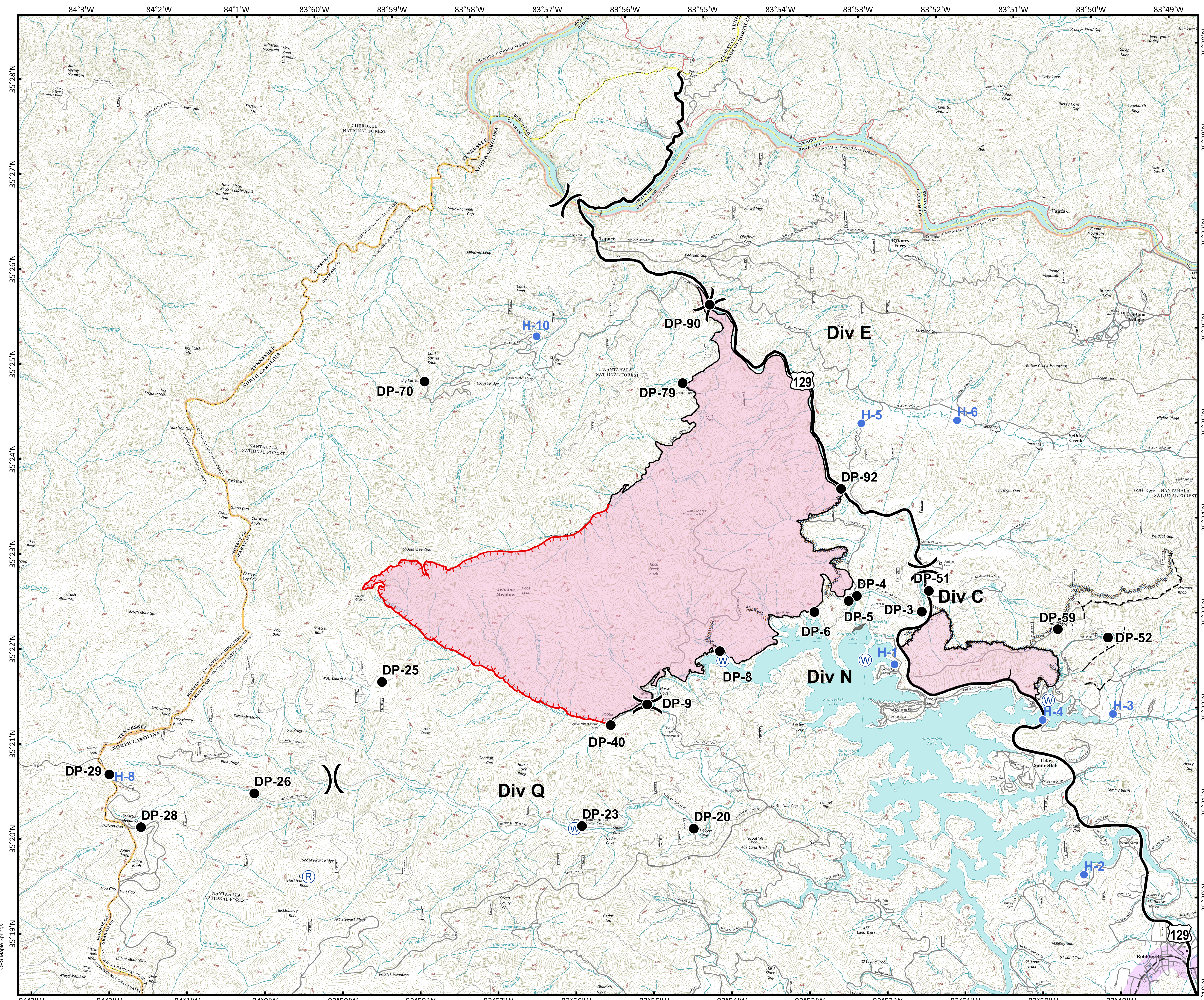




Approximate  
Acreage:  
**7,779**



- Drop Point
- Helispot
- Ⓡ Repeater
- Ⓜ Water Source
- ⎓ Division Break
- Uncontrolled Fire Edge
- Completed Line
- Completed Dozer Line
- - - Hand Line
- - - Planned Fire Line
- - - Trail of Tears



Download a GeoPDF



Information shown is based on the best available data at the time of map production.

Datum: North American 1983  
Units: Foot US  
Author: Blue Team GIS