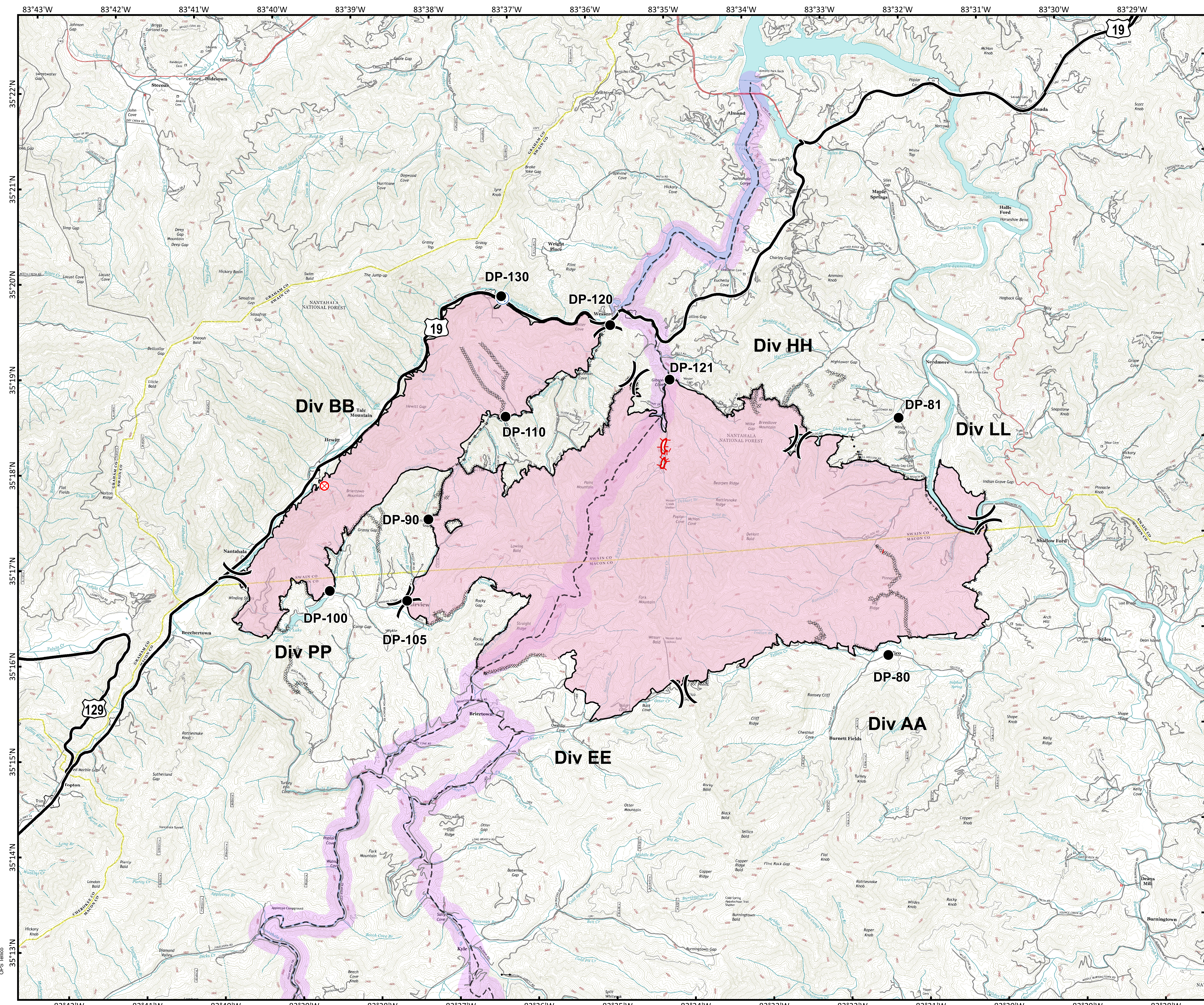


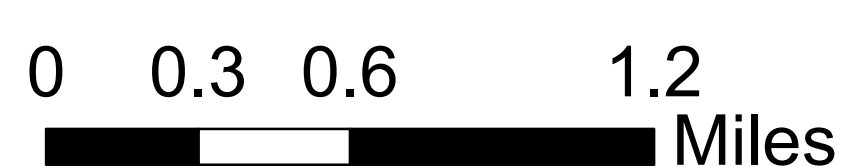


Approximate Acreage:
13,874



- Drop Point
- ⊗ Fire Origin
- Gate
- Ⓜ Water Source
- ⎓ Division Break
- Uncontrolled Fire Edge
- Completed Line
- Road as Completed Line
- Completed Dozer Line
- Hand Line
- ⊗ · ⊗ · ⊗ Proposed Dozer Line
- - - Planned Fire Line
- - - Trail of Tears

Download a GeoPDF



Information shown is based on the best available data at the time of map production.

Datum: North American 1983
Units: Foot US
Author: Blue Team GIS