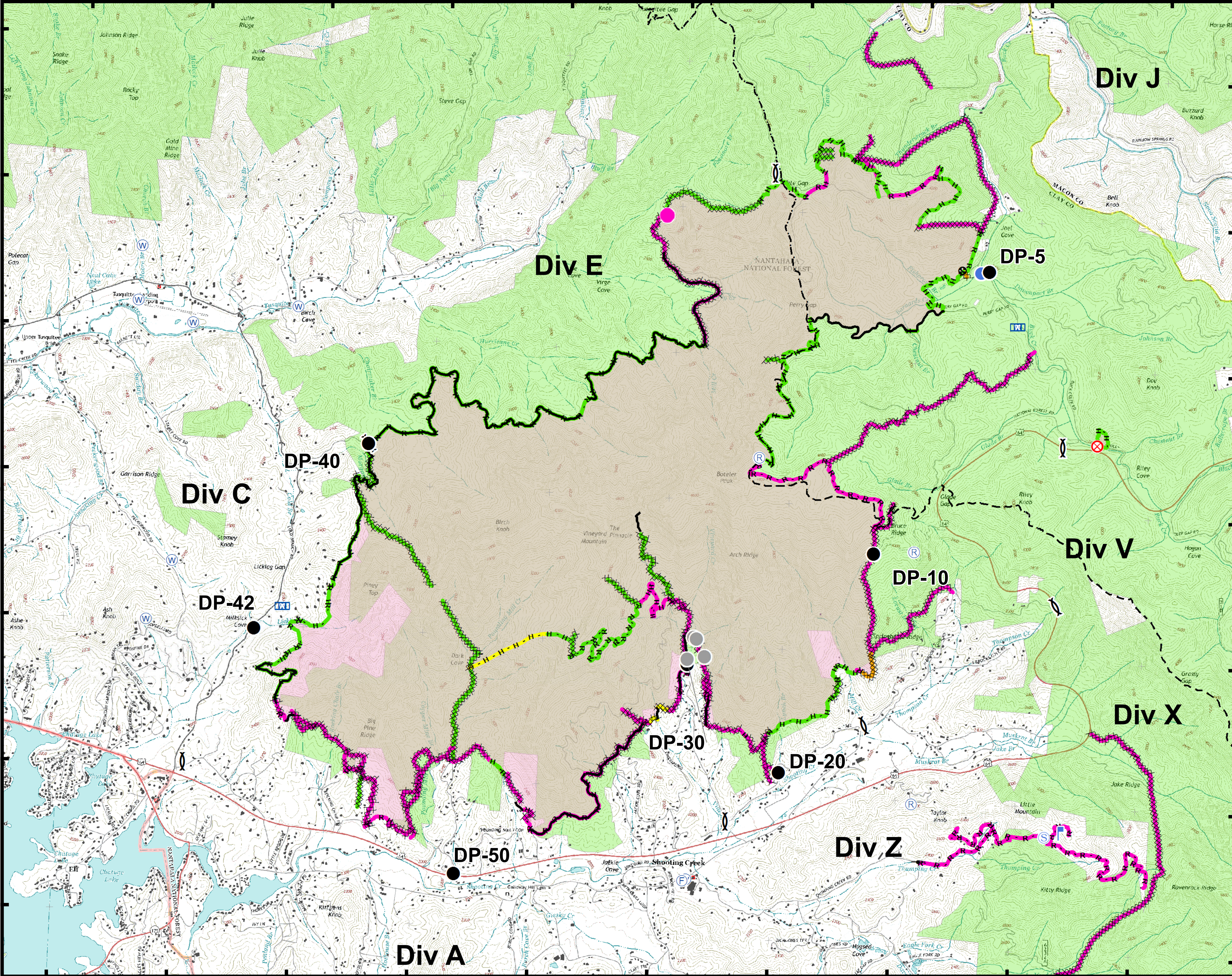


83°45'W 83°44'W 83°43'W 83°42'W 83°41'W 83°40'W 83°39'W 83°38'W 83°37'W 83°36'W

35°7'N
35°6'N
35°5'N
35°4'N
35°3'N
35°2'N
35°1'N



35°7'N
35°6'N
35°5'N
35°4'N
35°3'N
35°2'N
35°1'N

Approximate Acreage: 9023

- Rehab Needed
- Drop Point
- Fire Origin
- Fire Station
- Gate
- Helispot
- Lookout
- Mobile Weather Unit
- Repeater
- Staging Area
- Water Source
- Other
- Division Break
- Structure
- None needed
- Repair complete
- Repair in progress
- Repair needed

0 0.2 0.4 0.8 Miles

Information shown is based on the best available data at the time of map production.

Datum: North American 1983
Units: Foot US
Author: Blue Team GIS