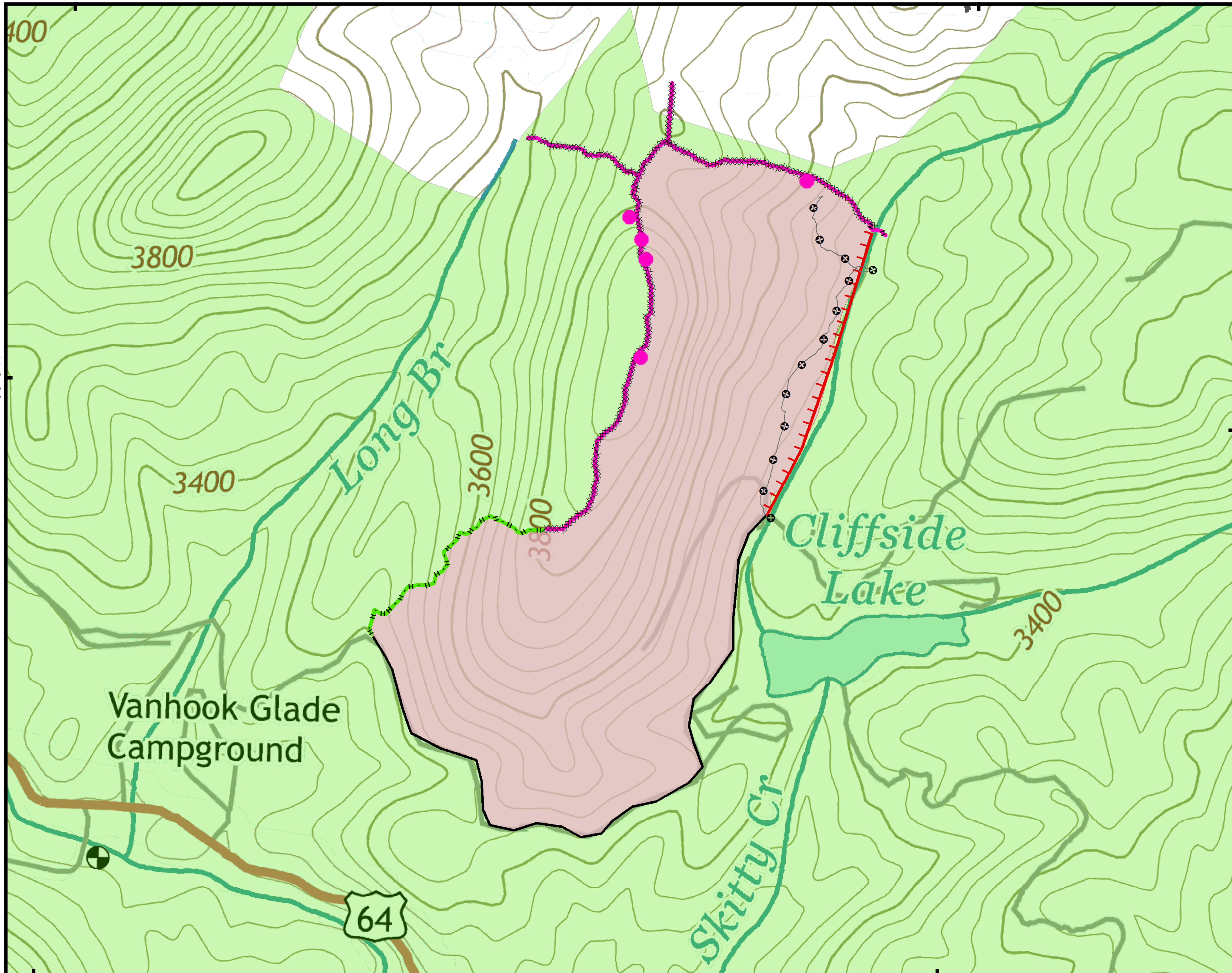


83°15'W

83°14'W



35°5'N

35°5'N

83°15'W

83°14'W



Approximate
Acreage:
110



- Rehab Needed
- Structure
- Repair complete
- Repair needed



0 0.0250.05 0.1
Miles

Information shown is based on the best available data at the time of map production.

Datum: North American 1983
Units: Foot US
Author: Blue Team GIS

Suppression Repair - Cliffside