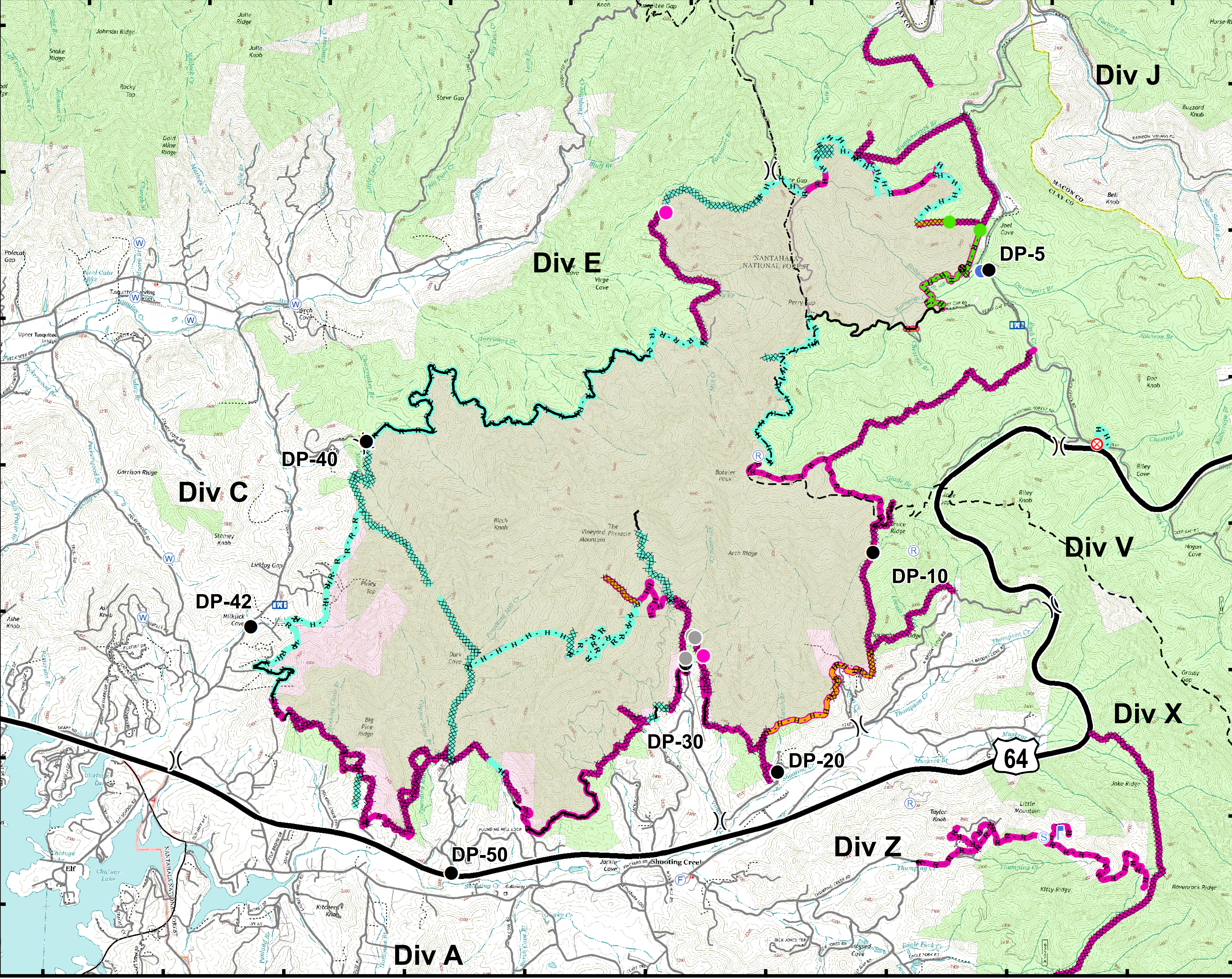


83°45'W 83°44'W 83°43'W 83°42'W 83°41'W 83°40'W 83°39'W 83°38'W 83°37'W 83°36'W

35°7'N  
35°6'N  
35°5'N  
35°4'N  
35°3'N  
35°2'N  
35°1'N



Approximate Acreage: 9,023



- Drop Point
- ⊗ Fire Origin
- Ⓜ Fire Station
- ⊢ Gate
- Helispot
- Ⓜ Lookout
- Ⓜ Mobile Weather Unit
- Ⓜ Repeater
- Ⓜ Staging Area
- Ⓜ Water Source
- Other
- ) ( Division Break
- ▨ Rehab Needed
- ▨ Rehab Complete
- Completed Line
- R - R - R Road as Completed Line
- ▨ Completed Dozer Line
- H - H - H Hand Line
- ⊕ Other
- ▨ Rehab in Progress
- ▨ Ops Approved
- ▨ READ Validated
- ▨ Repair Needed
- - - Other Trails



Information shown is based on the best available data at the time of map production.

Datum: North American 1983  
Units: Foot US  
Author: Blue Team GIS

83°45'W 83°44'W 83°43'W 83°42'W 83°41'W 83°40'W 83°39'W 83°38'W 83°37'W 83°36'W