

83°36'W

83°35'W

83°34'W

83°33'W

83°32'W

83°31'W

35°13'N

35°12'N

35°11'N

35°10'N

35°9'N

83°36'W

83°35'W

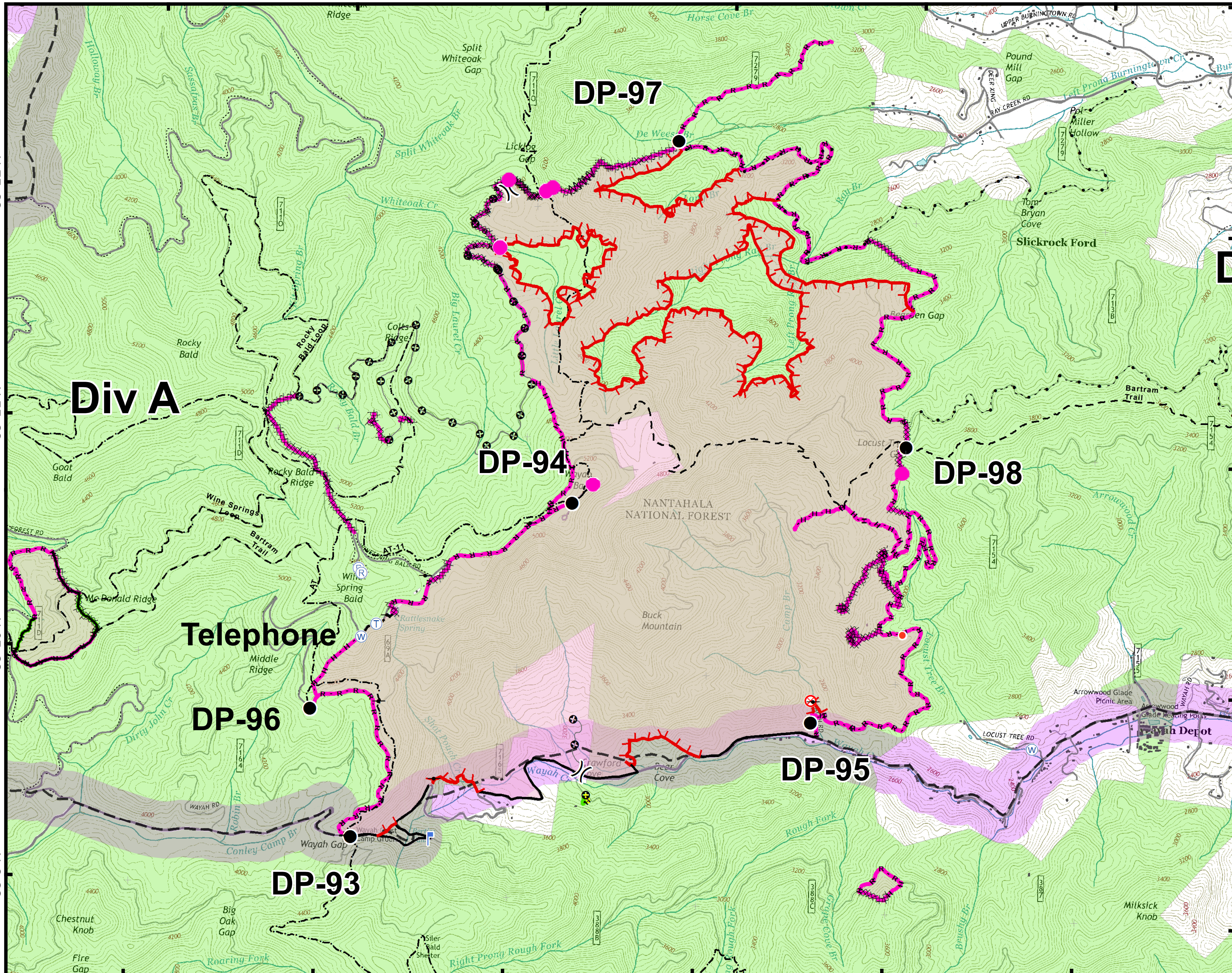
83°34'W

83°33'W

83°32'W

83°31'W

35°9'N



Approximate
Acreage:
3422



- Rehab Needed
- Drop Point
- Fire Origin
- Gate
- Hot Spot
- Lookout
- Repeater
- Telephone
- Water Source
- Other
- Division Break
- Structure
- None needed
- Repair complete
- Repair needed
- Trail of Tears
- Trail of Tears Protection Area



Information shown is based on the best available data at the time of map production.

Datum: North American 1983
Units: Foot US
Author: Blue Team GIS