



Approximate Acreage: 9,023



- Drop Point
- Fire Origin
- Fire Station
- Gate
- Helispot
- Lookout
- Mobile Weather Unit
- Repeater
- Staging Area
- Water Source
- Other
- Division Break
- Branch Break
- Trail of Tears
- Appalachian Trail
- Uncontrolled Fire Edge
- Completed Line
- Road as Completed Line
- Completed Dozer Line
- Hand Line
- Management Action Point
- Other
- Trail of Tears 1,500 foot Buffer

- Trail of Tears
- Appalachian Trail
- Uncontrolled Fire Edge
- Completed Line
- Road as Completed Line
- Completed Dozer Line
- Hand Line
- Management Action Point
- Other
- Trail of Tears 1,500 foot Buffer

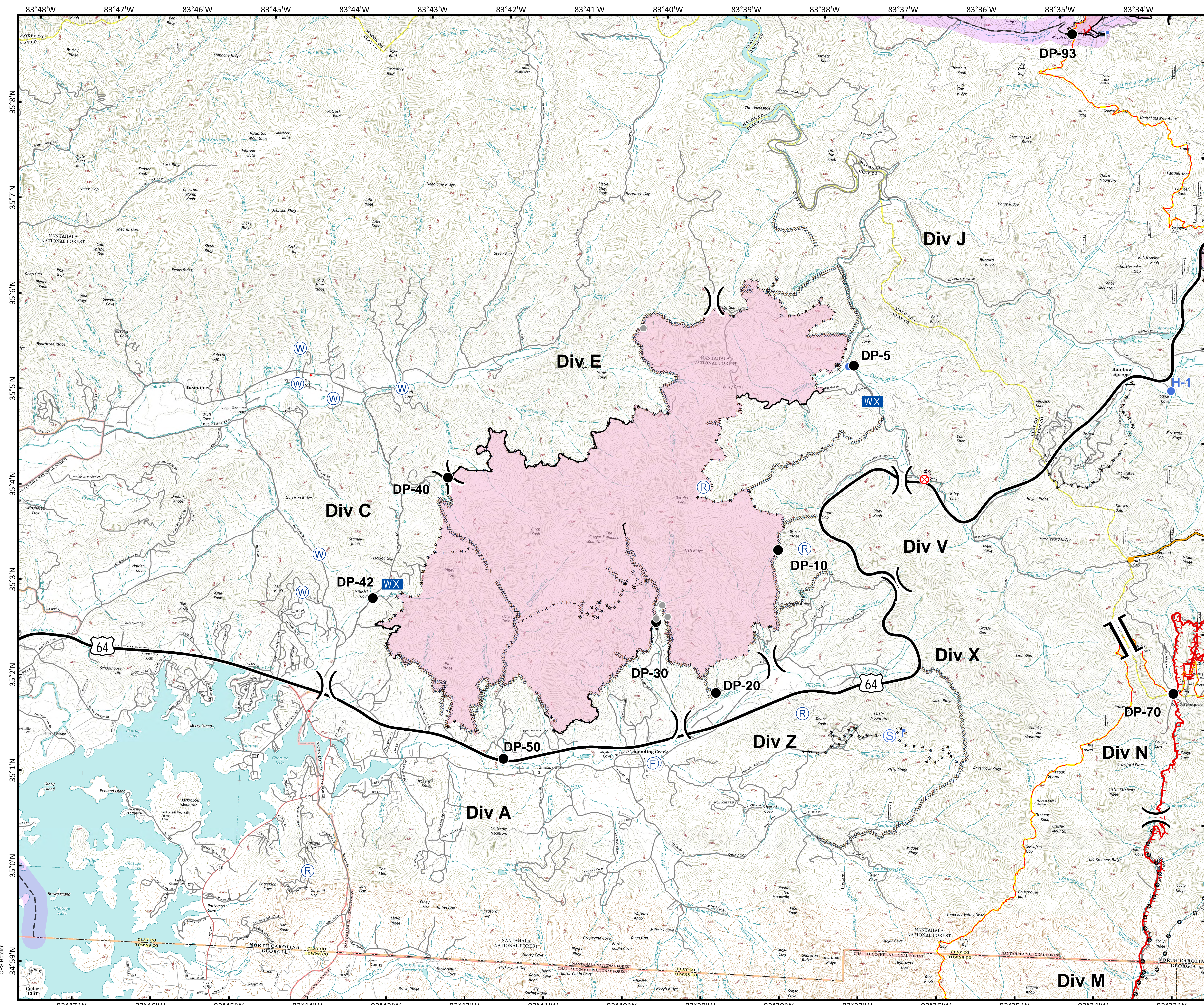
Download a GeoPDF



0 0.250.5 1 Miles

Information shown is based on the best available data at the time of map production.

Datum: North American 1983
Units: Foot US
Author: Blue Team GIS



OPS Boteler