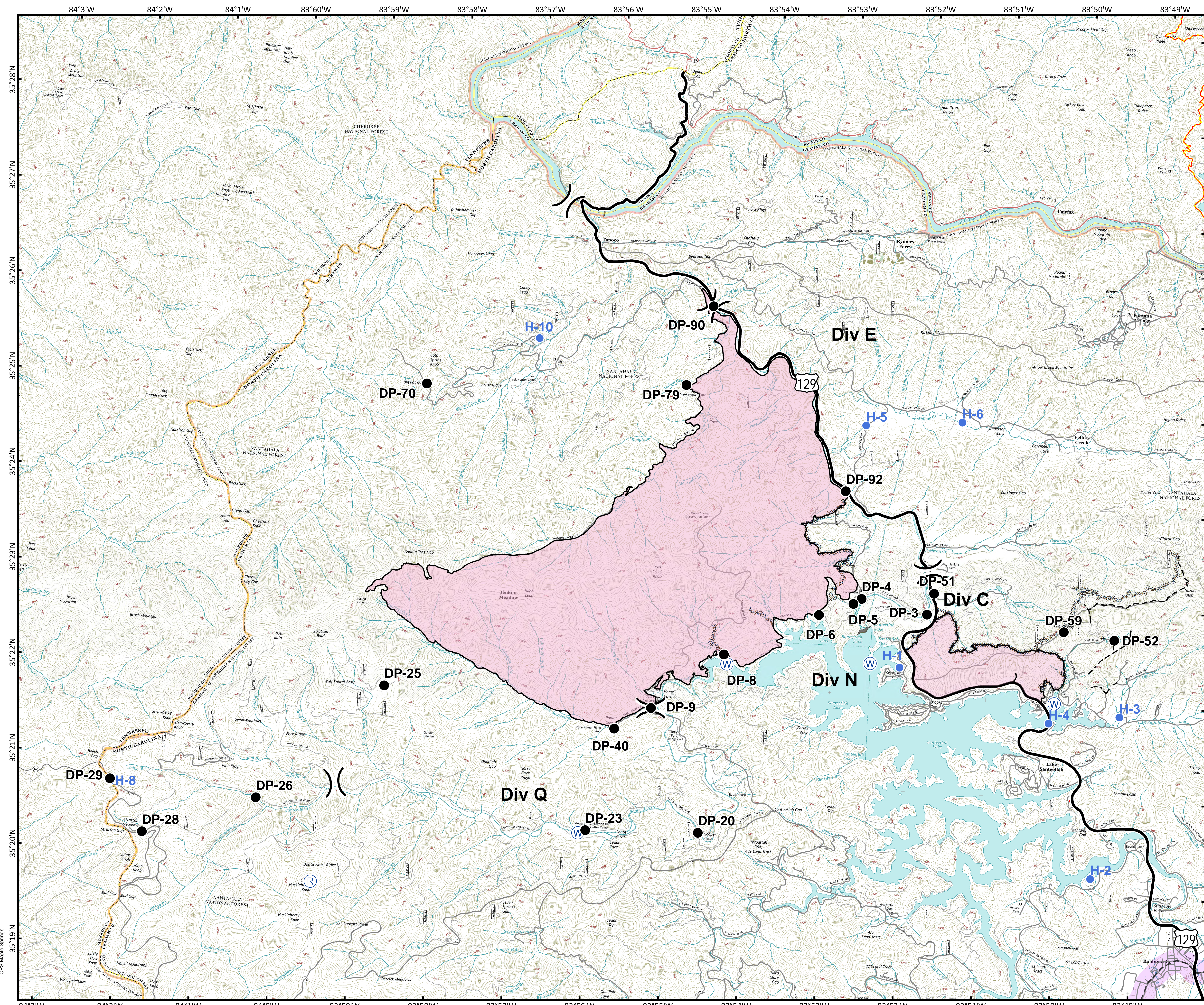


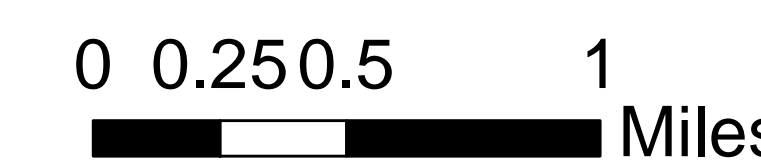


Approximate Acreage: 7,779



- Drop Point
- Helispot
- Ⓡ Repeater
- Ⓜ Water Source
-)) Division Break
- - - Trail of Tears
- Appalachian Trail
- Completed Line
- ⊘ Completed Dozer Line
- - - Hand Line
- - - Planned Fire Line
- Trail of Tears 1,500 foot Buffer

Download a GeoPDF



Information shown is based on the best available data at the time of map production.

Datum: North American 1983
Units: Foot US
Author: Blue Team GIS

OPS Maple Springs