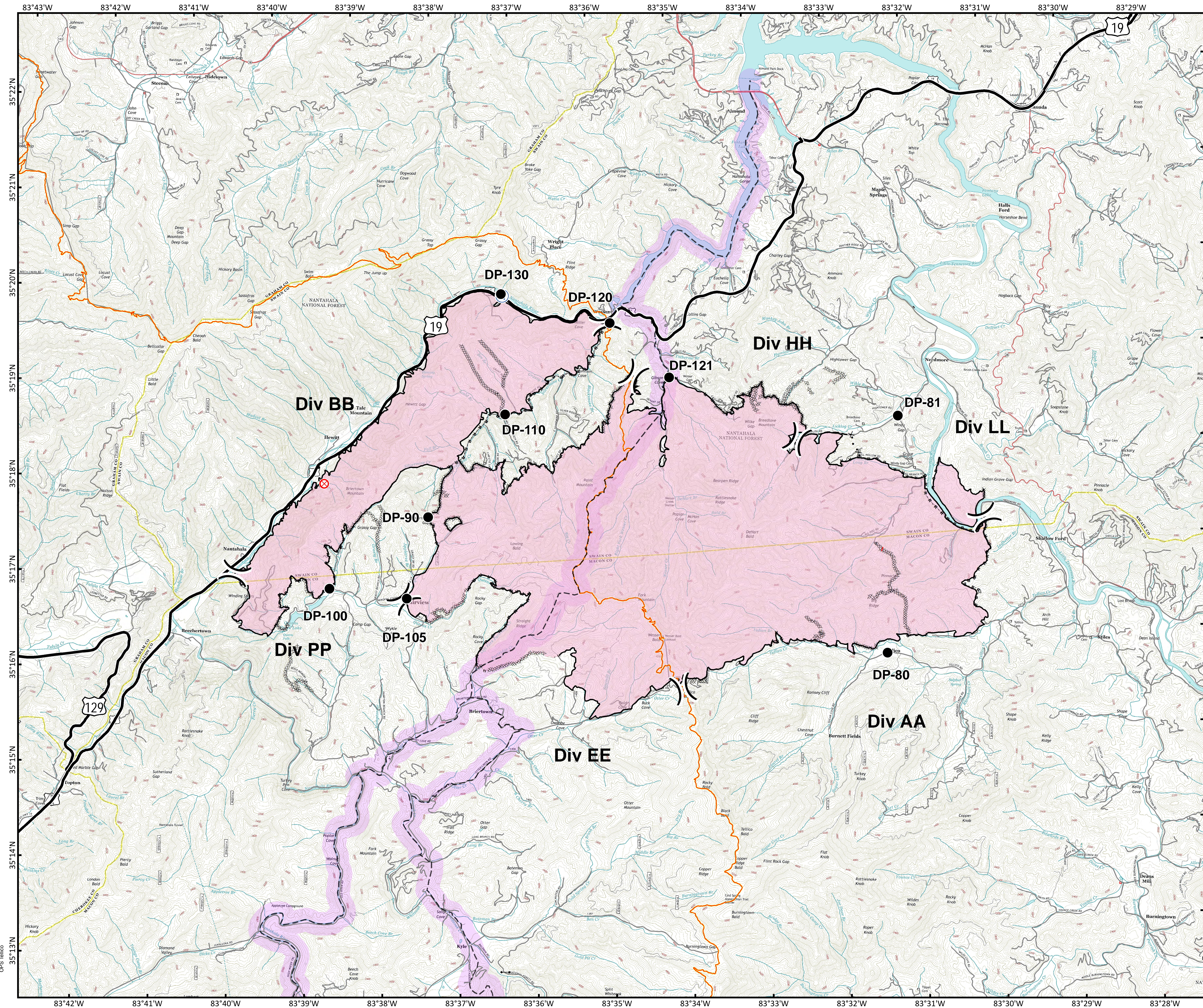




Approximate Acreage:
13,874



- Drop Point
- ⊗ Fire Origin
- Gate
- Ⓜ Water Source
-) (Division Break
- - - Trail of Tears
- Appalachian Trail
- Uncontrolled Fire Edge
- Completed Line
- R - R - R - R Road as Completed Line
- Completed Dozer Line
- H - H - H - H Hand Line
- ⊗ · ⊗ · ⊗ Proposed Dozer Line
- - - Planned Fire Line
- Trail of Tears 1,500 foot Buffer

Download a GeoPDF



0 0.250.5 1 Miles

Information shown is based on the best available data at the time of map production.

Datum: North American 1983
Units: Foot US
Author: Blue Team GIS