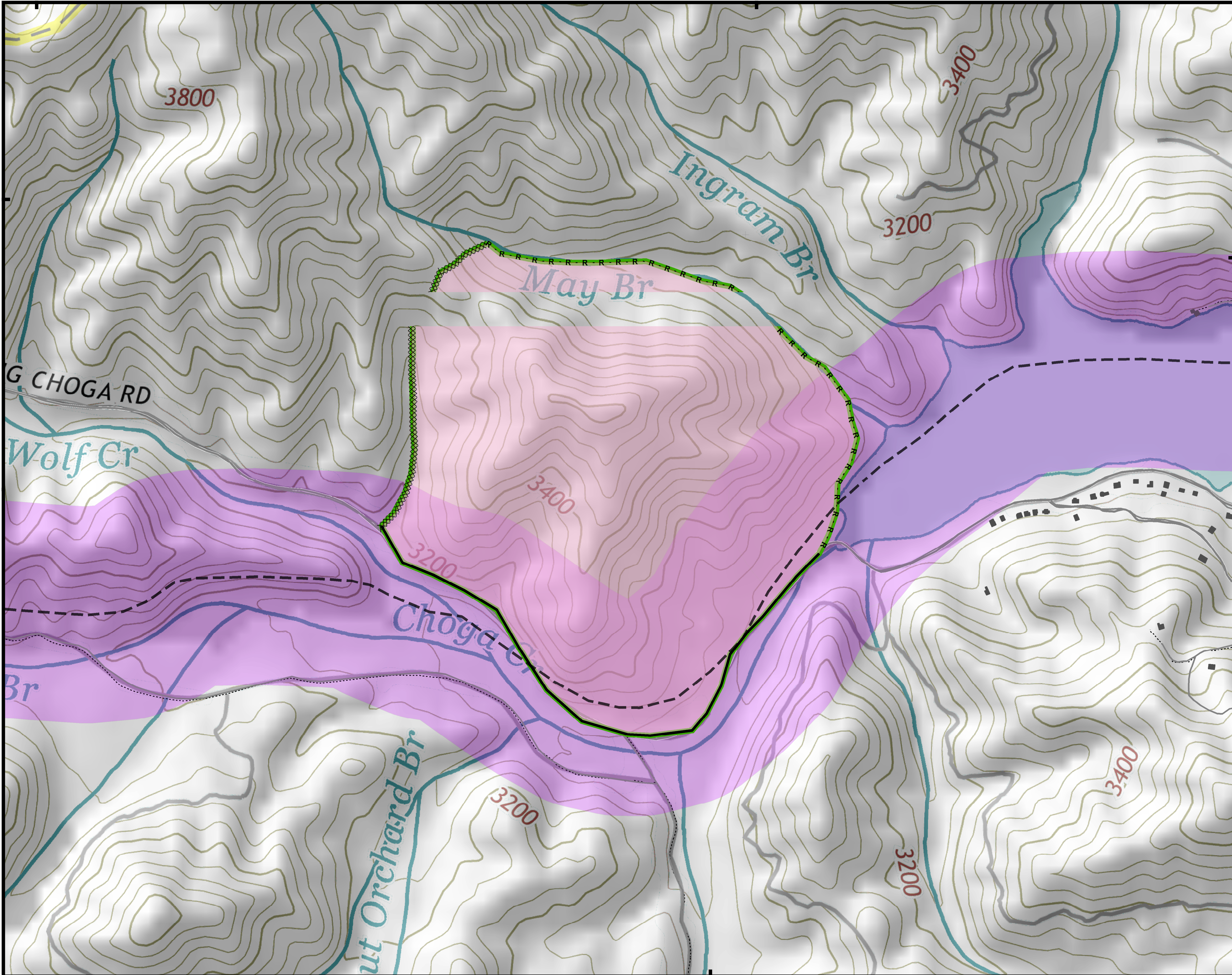


83°43'W

83°42'W

35°11'N

35°11'N



- Trail of Tears
- Completed Line
- R · R · R Road as Completed Line
- XXXXXX Completed Dozer Line
- Wildfire Daily Fire Perimeter
- READ Validated
- Structure



**Approximate  
Acreage:  
175.327346**



1 in = 0.079 miles  
Datum: North American 1983  
Units: Foot US  
Author: John Mosley

**12/04/2016**

83°42'W