

Suppression Repair

Boteler

NC-NCF-160247

83°44'W

83°43'W

83°42'W

83°41'W

83°40'W

83°39'W

83°38'W

83°37'W

35°6'N

35°5'N

35°4'N

35°3'N

35°2'N

35°6'N

35°5'N

35°4'N

35°3'N

35°2'N

83°44'W

83°43'W

83°42'W

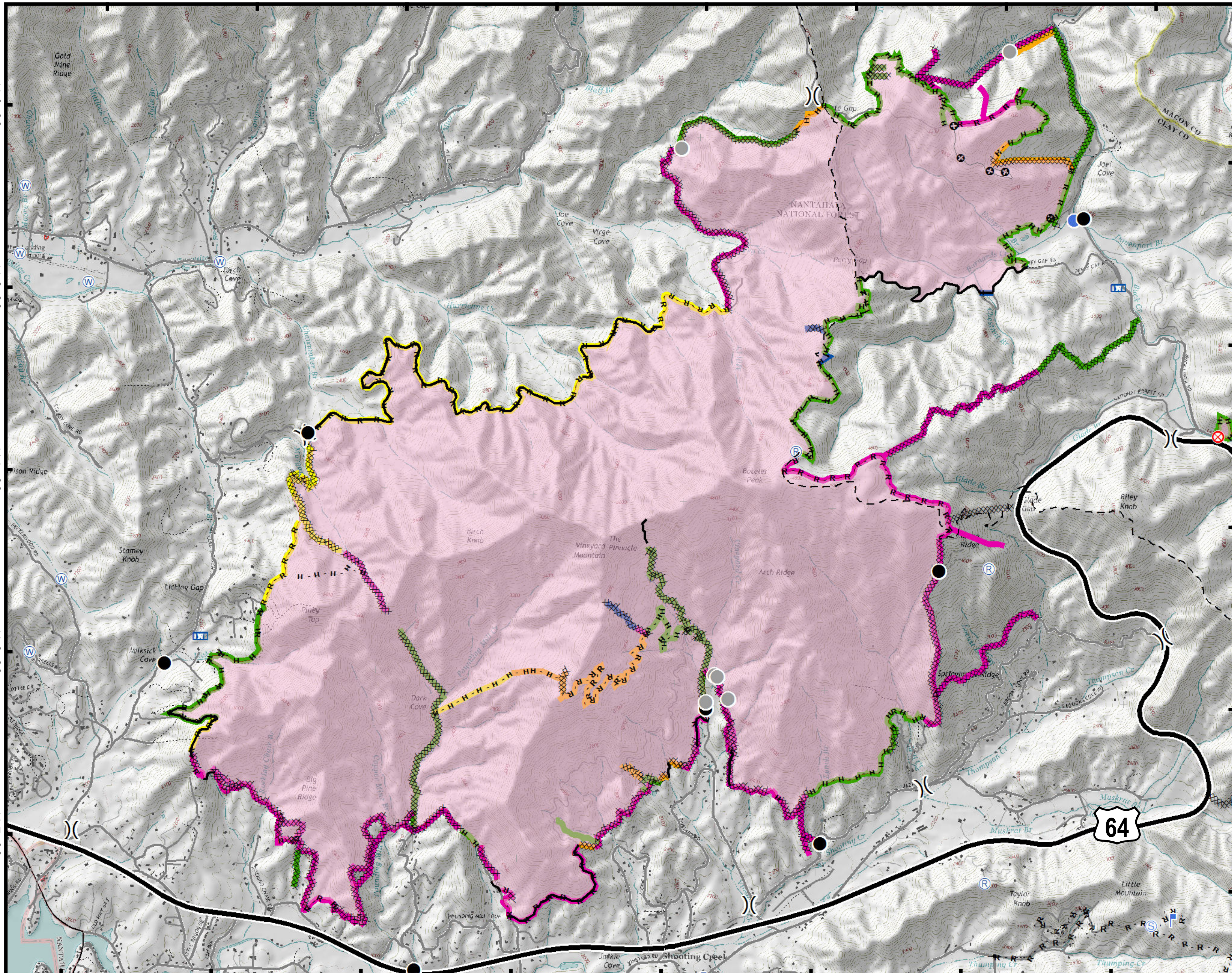
83°41'W

83°40'W

83°39'W

83°38'W

83°37'W



- Other Trails
- Drop Point
- Fire Origin
- Fire Station
- Gate
- Helispot
- Lookout
- Mobile Weather Unit
- Repeater
- Staging Area
- Water Source
- Other
- Division Break
- Completed Line
- R - R - R Road as Completed Line
- Completed Dozer Line
- H - H - H Hand Line
- Other
- Wildfire Daily Fire Perimeter
- None Needed
- Ops Approved
- READ Validated
- Rehab Needed
- Rehab in Progress
- Structure
- North Carolina Forest Service
- U.S. Forest Service
- Southern Forestry

Approximate Acreage:
9023.114751



1 in = 0.38 miles
Datum: North American 1983
Units: Foot US
Author: Blue Team GIS

12/05/2016