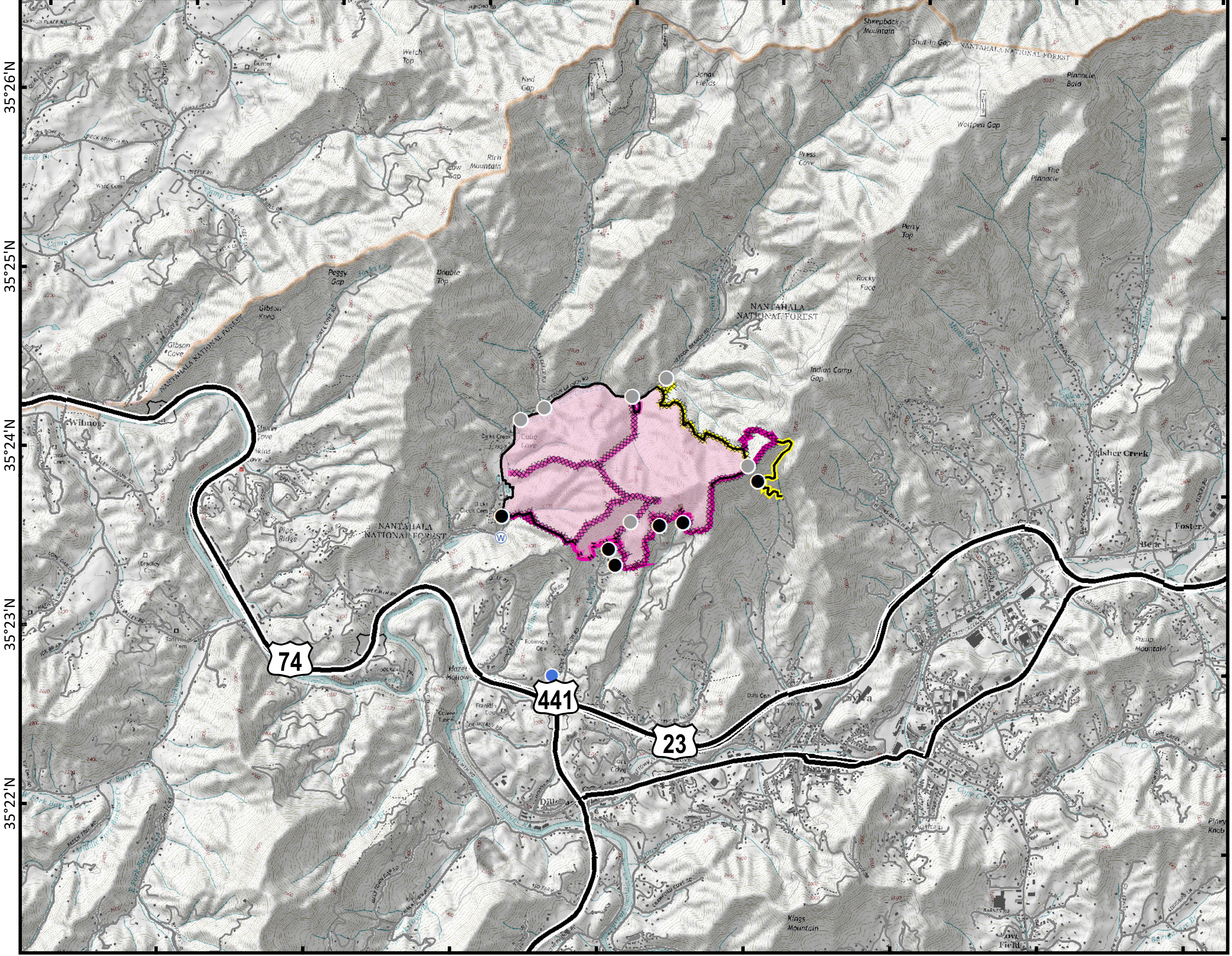


83°19'W 83°18'W 83°17'W 83°16'W 83°15'W 83°14'W 83°13'W 83°12'W 83°11'W



35°26'N 35°25'N 35°24'N 35°23'N 35°22'N

- Drop Point
- Helispot
- ▣ Incident Command Post
- Ⓜ Water Source
- Other
- Completed Line
- ▨ Completed Dozer Line
- - - Hand Line
- ▨ Wildfire Daily Fire Perimeter
- ▨ None Needed
- ▨ Rehab Needed
- ▨ Structure



Approximate  
Acreage:  
728.577823



1 in = 0.38 miles  
Datum: North American 1983  
Units: Foot US  
Author: Blue Team GIS

12/05/2016