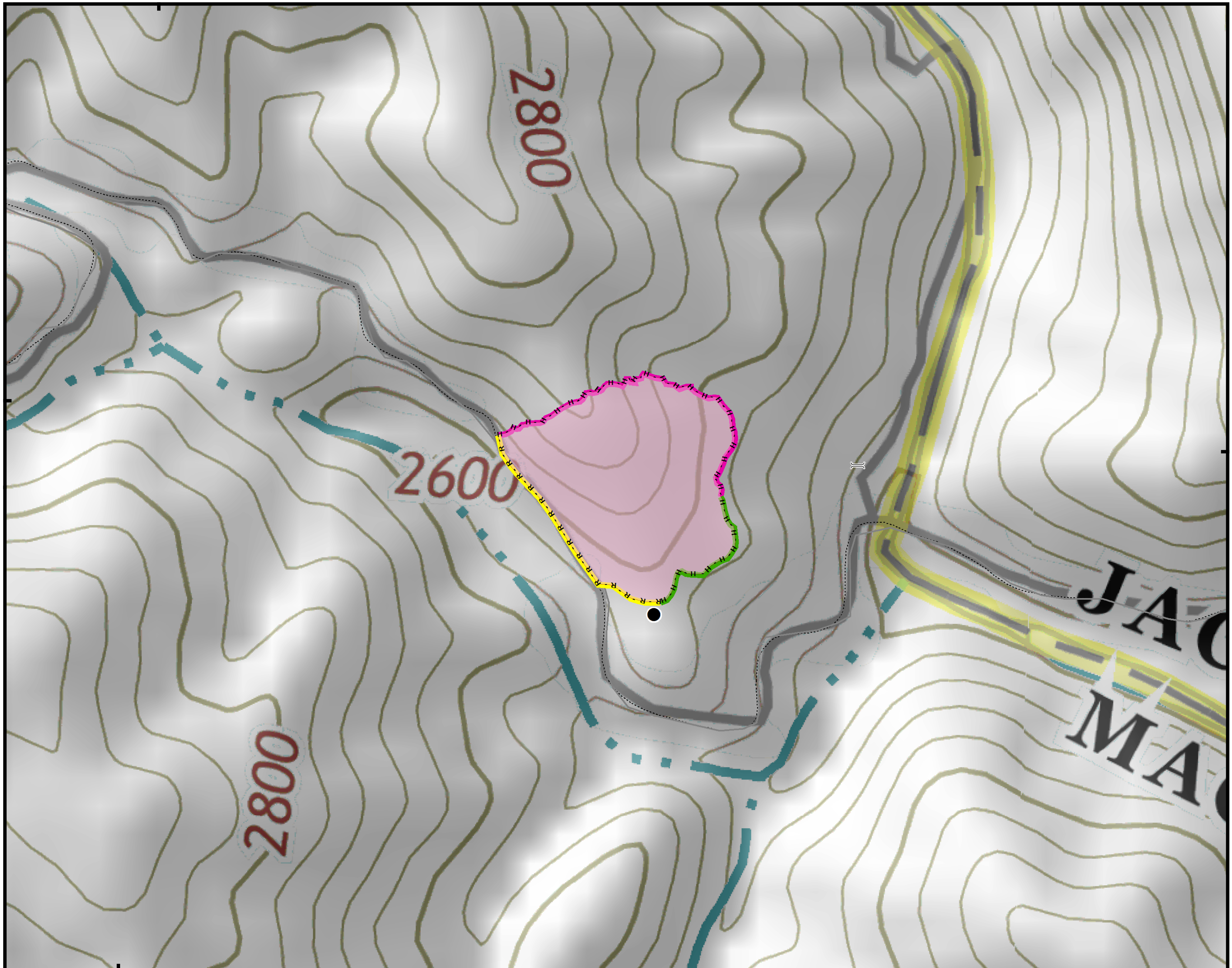


83°8'W

35°1'N

35°1'N



83°8'W

● Drop Point

R · R · R Road as Completed Line

H · H · H Hand Line

Wildfire Daily Fire Perimeter

None Needed

READ Validated

Rehab Needed

Trail Bridges



Approximate  
Acreage:  
6.4



1 in = 0.032 miles  
Datum: North American 1983  
Units: Foot US  
Author: Blue Team GIS

12/06/2016