

Suppression Repair

Knob

NC-NCF-160275

83°36'W 83°35'W 83°34'W 83°33'W 83°32'W 83°31'W 83°30'W 83°29'W

35°9'N

35°8'N

35°7'N

35°6'N

35°5'N

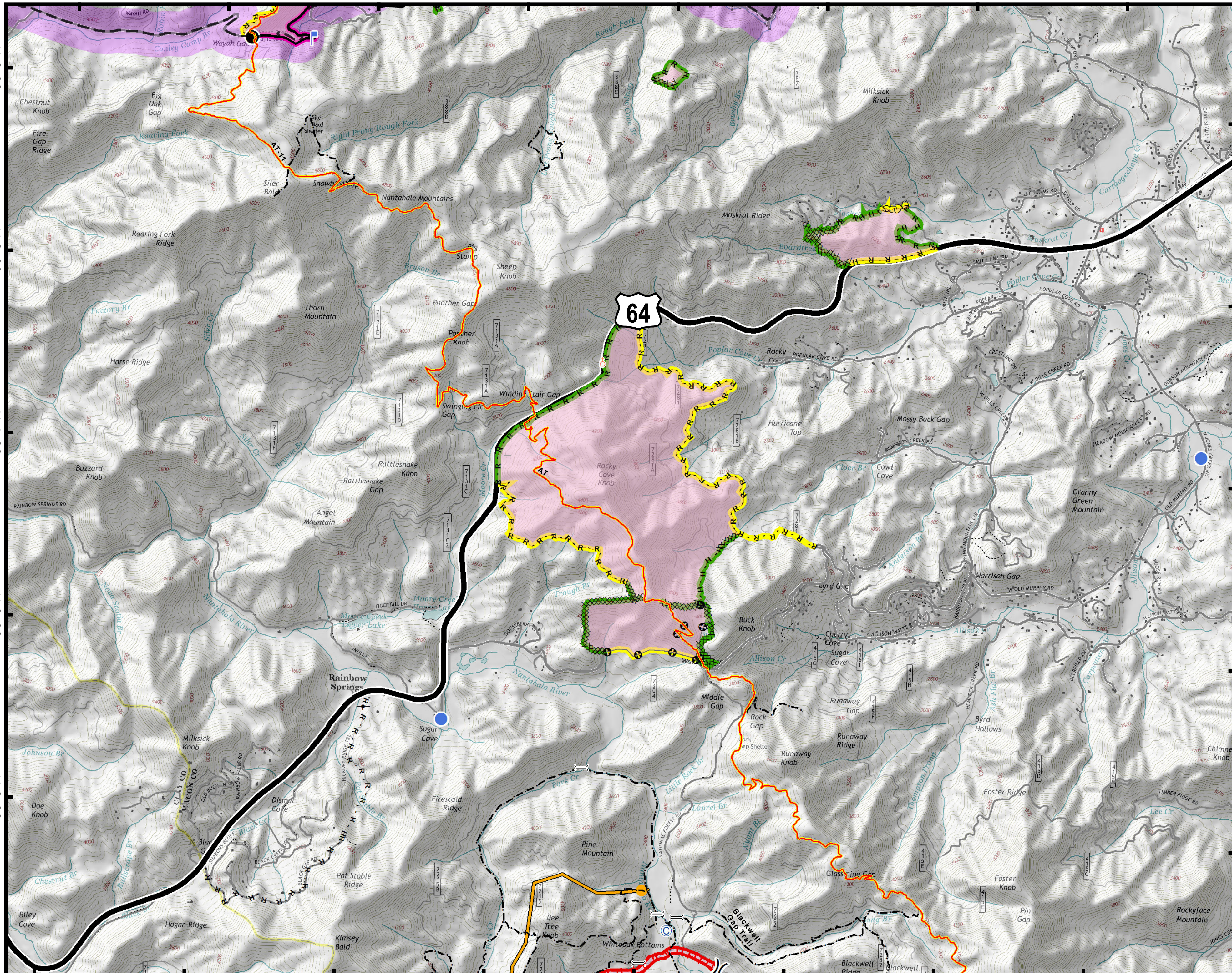
35°9'N

35°8'N

35°7'N

35°6'N

35°5'N



- Trail of Tears
- Appalachian Trail
- Other Trails
- Camp
- Drop Point
- Gate
- Helispot
- Lookout
- Spot Fire
- Division Break
- Uncontrolled Fire Edge
- Completed Line
- R · R · R Road as Completed Line
- Completed Dozer Line
- H · H · H Hand Line
- (X)(X)(X) Ridge/Geographic Feature
- Management Action Point
- Other
- Wildfire Daily Fire Perimeter
- None Needed
- READ Validated
- Rehab Needed
- Structure
- Trail Bridges



Approximate Acreage: 1129.6



1 in = 0.38 miles
Datum: North American 1983
Units: Foot US
Author: Blue Team GIS

12/07/2016

83°36'W 83°35'W 83°34'W 83°33'W 83°32'W 83°31'W 83°30'W 83°29'W 83°28'W