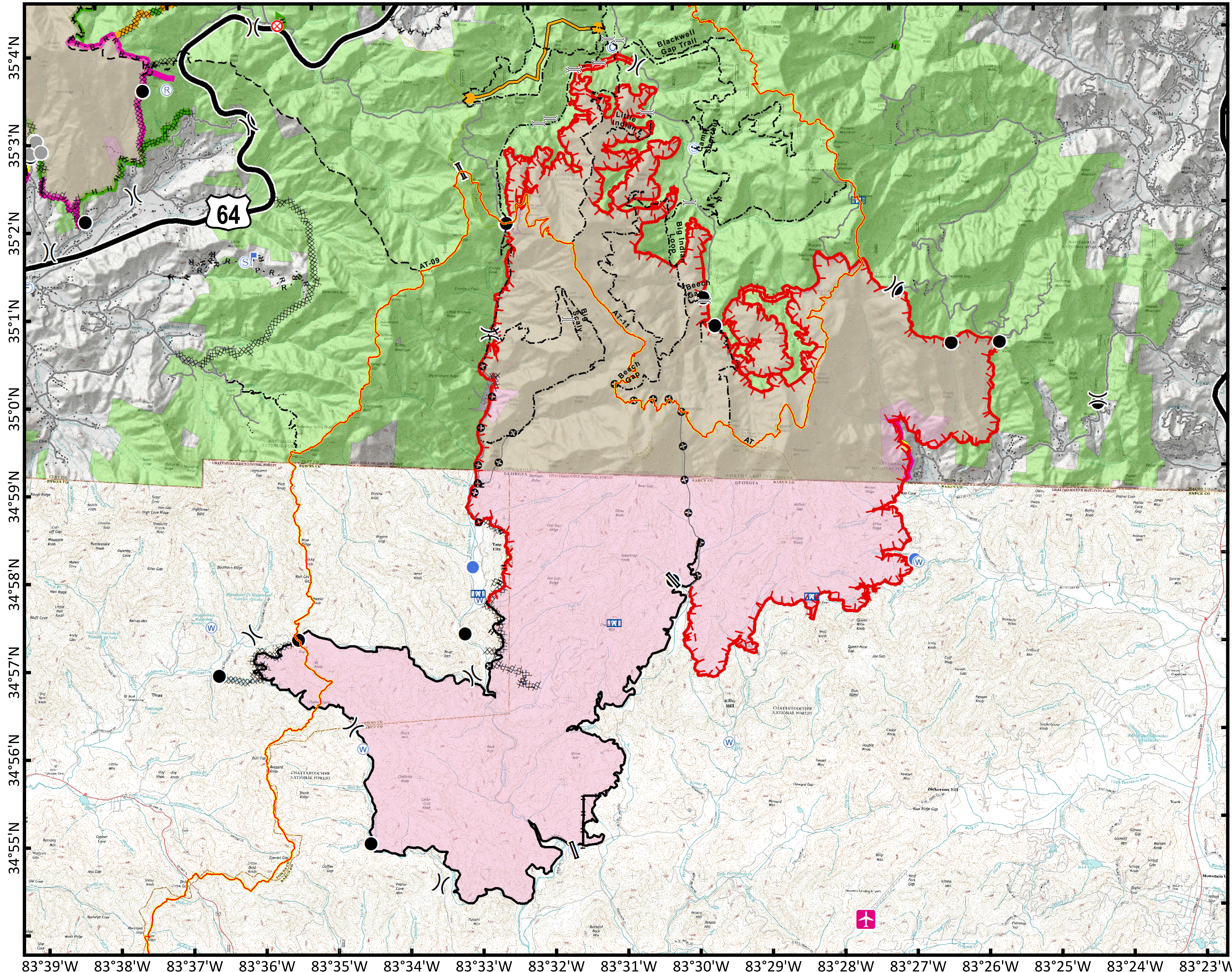


Suppression Repair

Rock Mountain

-160079

83°39'W 83°38'W 83°37'W 83°36'W 83°35'W 83°34'W 83°33'W 83°32'W 83°31'W 83°30'W 83°29'W 83°28'W 83°27'W 83°26'W 83°25'W 83°24'W



- Trail Bridges
- Appalachian Trail
- Other Trails
- Airstrip or Airport
- Camp
- Drop Point
- Fire Origin
- Fire Station
- Gate
- Helispot
- Lookout
- Mobile Weather Unit
- Repeater
- Staging Area
- Water Source
- Other
- Division Break
- Branch Break
- Uncontrolled Fire Edge
- Completed Line
- R · R · R Road as Completed Line
- Completed Dozer Line
- H · H · H Hand Line
- Management Action Point
- Other
- Wildfire Daily Fire Perimeter
- None Needed
- READ Validated
- Rehab Needed
- Rehab in Progress
- Structure



Approximate
Acreage:
24706.3



1 in = 0.77 miles
Datum: North American 1983
Units: Foot US
Author: Blue Team GIS

12/08/2016