

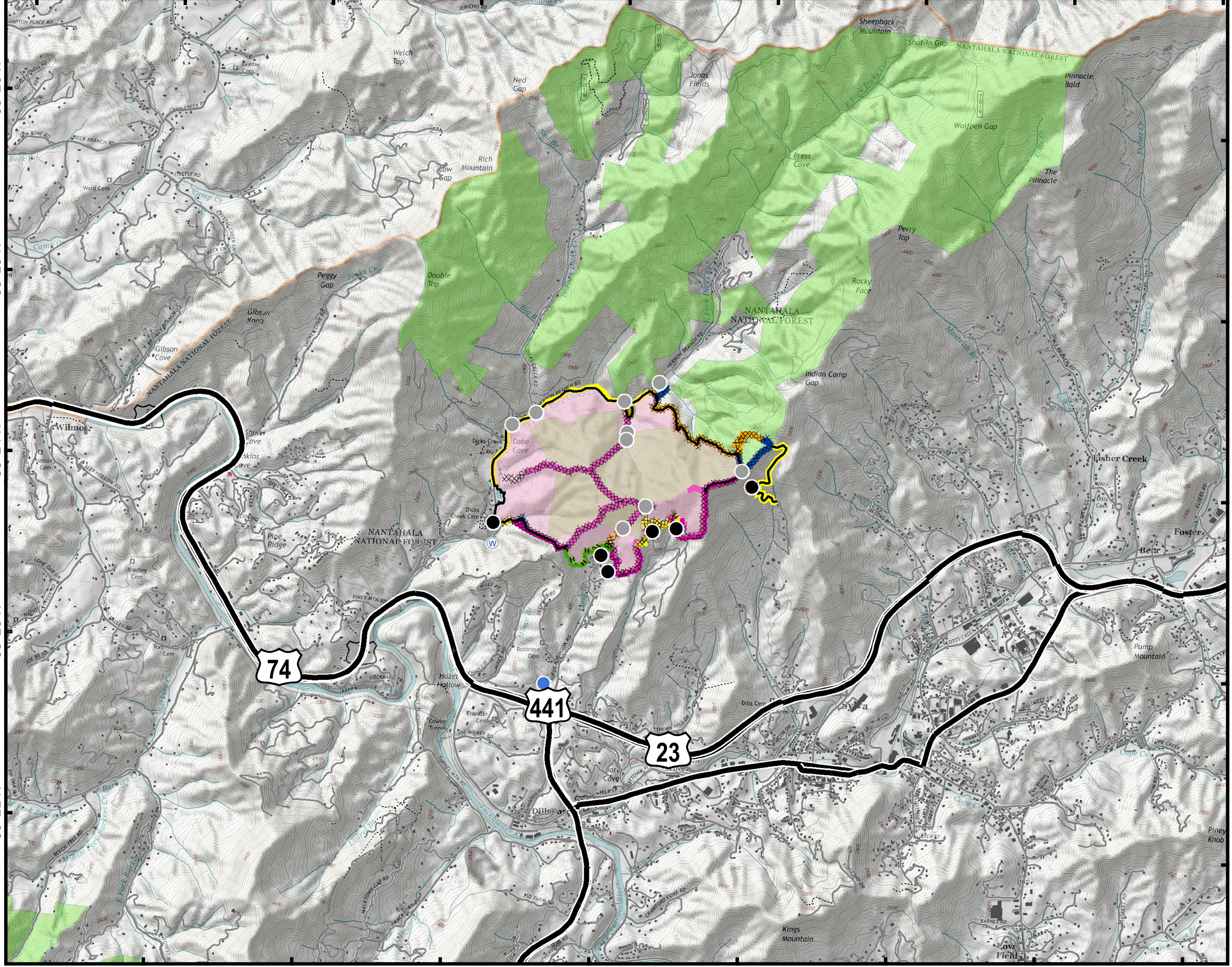
# Suppression Repair

# Dicks Creek

NC-NCF-160242

83°19'W 83°18'W 83°17'W 83°16'W 83°15'W 83°14'W 83°13'W 83°12'W 83°11'W

35°26'N  
35°25'N  
35°24'N  
35°23'N  
35°22'N



- Drop Point
- Helispot
- Incident Command Post
- Ⓜ Water Source
- Other
- Completed Line
- XXXXX Completed Dozer Line
- - - Hand Line
- Wildfire Daily Fire Perimeter
- None Needed
- Ops Approved
- READ Validated
- Rehab Needed
- Rehab in Progress
- Structure



Approximate  
Acreage:  
728.6



1 in = 0.38 miles  
Datum: North American 1983  
Units: Foot US  
Author: Blue Team GIS

12/09/2016

83°18'W 83°17'W 83°16'W 83°15'W 83°14'W 83°13'W 83°12'W 83°11'W