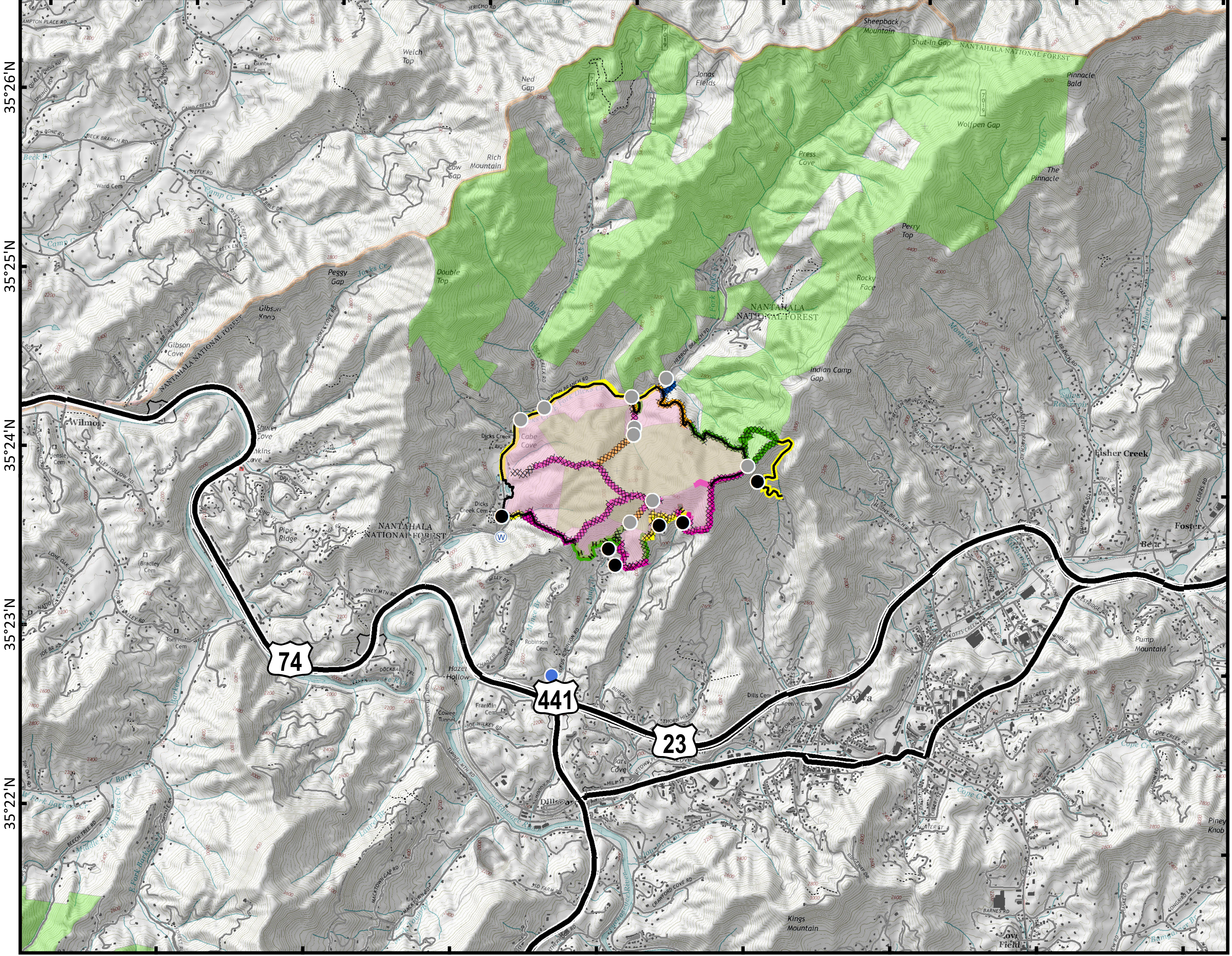


# Suppression Repair

# Dicks Creek

NC-NCF-160242

83°19'W 83°18'W 83°17'W 83°16'W 83°15'W 83°14'W 83°13'W 83°12'W 83°11'W



35°26'N  
35°25'N  
35°24'N  
35°23'N  
35°22'N

- Drop Point
- Helispot
- ▣ Incident Command Post
- ⊙ Water Source
- Other
- Completed Line
- ⊗ Completed Dozer Line
- - - Hand Line
- ▭ Wildfire Daily Fire Perimeter
- ▭ None Needed
- ▭ Ops Approved
- ▭ READ Validated
- ▭ Rehab Needed
- ▭ Rehab in Progress
- ▭ Structure



Approximate  
Acreage:  
728.6



1 in = 0.38 miles  
Datum: North American 1983  
Units: Foot US  
Author: Blue Team GIS

12/11/2016