

Aviation Hazard Map

Pisgah National Forest

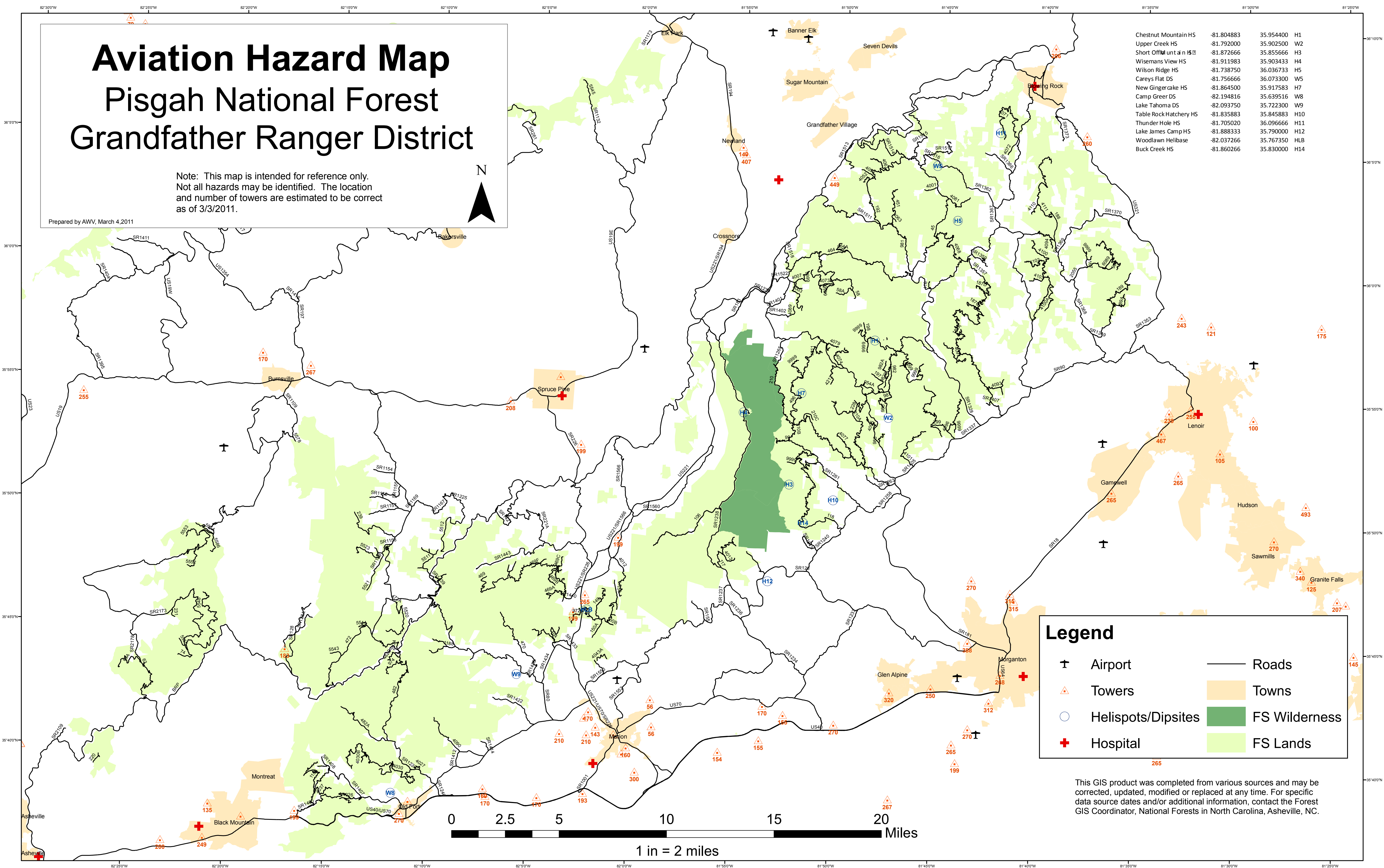
Grandfather Ranger District

Note: This map is intended for reference only. Not all hazards may be identified. The location and number of towers are estimated to be correct as of 3/3/2011.



Prepared by AWW, March 4, 2011

Chestnut Mountain HS	-81.804883	35.954400	H1
Upper Creek HS	-81.792000	35.902500	W2
Short Off Mountain HS	-81.872666	35.855666	H3
Wisemans View HS	-81.911983	35.903433	H4
Wilson Ridge HS	-81.738750	36.036733	H5
Careys Flat DS	-81.756666	36.073300	W5
New Gingercake HS	-81.864500	35.917583	H7
Camp Greer DS	-82.194816	35.639516	W8
Lake Tahoma DS	-82.093750	35.722300	W9
Table Rock Hatchery HS	-81.835883	35.845883	H10
Thunder Hole HS	-81.705020	36.096666	H11
Lake James Camp HS	-81.888333	35.790000	H12
Woodlawn Helibase	-82.037266	35.767350	HLB
Buck Creek HS	-81.860266	35.830000	H14



Legend

- Airport
- Towers
- Helispots/Dipsites
- Hospital
- Roads
- Towns
- FS Wilderness
- FS Lands

This GIS product was completed from various sources and may be corrected, updated, modified or replaced at any time. For specific data source dates and/or additional information, contact the Forest GIS Coordinator, National Forests in North Carolina, Asheville, NC.

