

Suppression Repair

Boteler

NC-NCF-160247

83°44'W

83°43'W

83°42'W

83°41'W

83°40'W

83°39'W

83°38'W

83°37'W

35°6'N

35°5'N

35°4'N

35°3'N

35°2'N

35°6'N

35°5'N

35°4'N

35°3'N

35°2'N

83°44'W

83°43'W

83°42'W

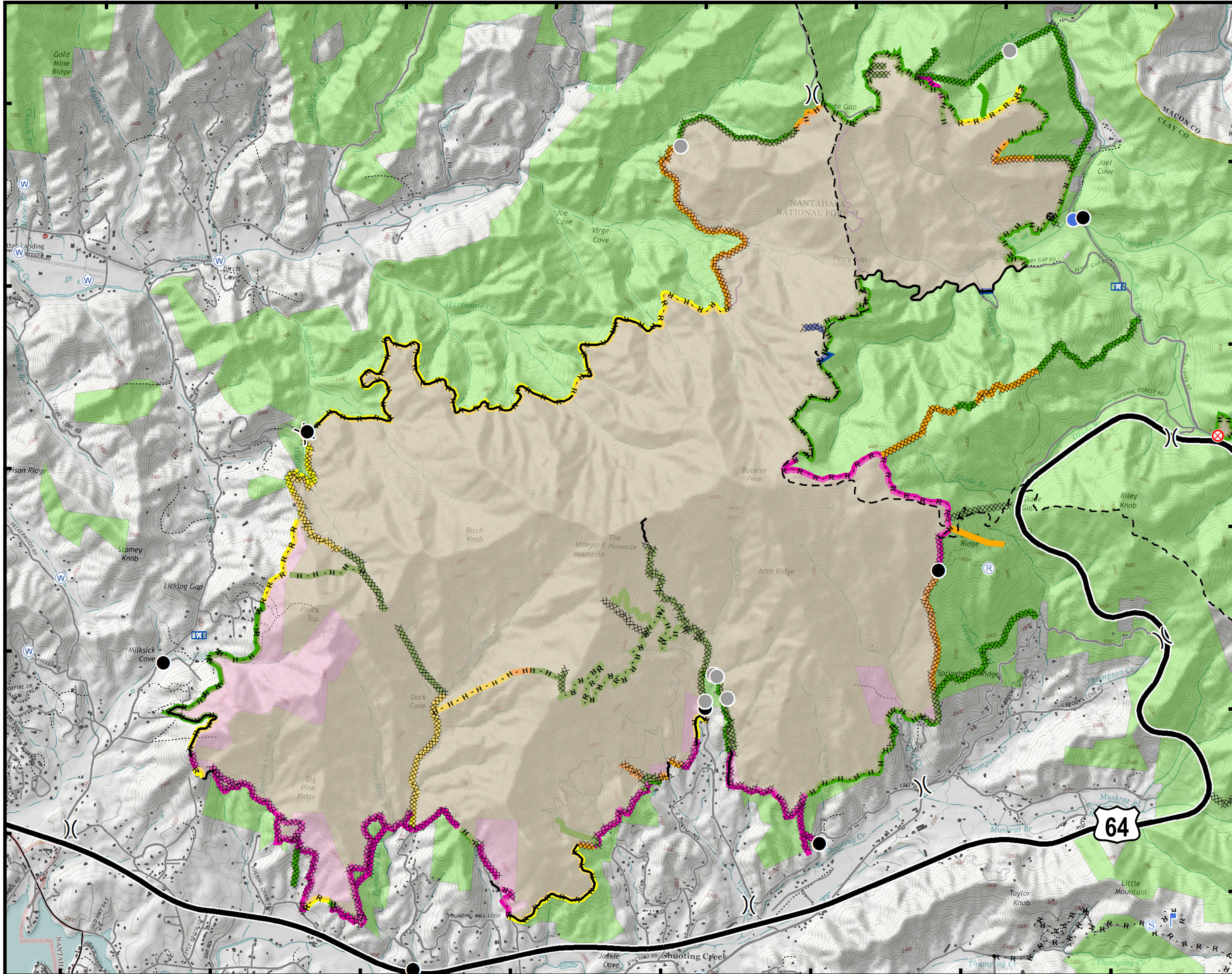
83°41'W


83°40'W

83°39'W

83°38'W

83°37'W



- Other Trails
 - Drop Point
 - Fire Origin
 - Fire Station
 - Gate
 - Helispot
 - Lookout
 - Mobile Weather Unit
 - Repeater
 - Staging Area
 - Water Source
 - Other
 - Division Break
 - Completed Line
 - R - R - R Road as Completed Line
 - Completed Dozer Line
 - H - H - H Hand Line
 - Other
 - Wildfire Daily Fire Perimeter
 - None Needed
 - Ops Approved
 - READ Validated
 - Rehab Needed
 - Rehab in Progress
 - Structure
- 

Approximate
Acreage:
9023.1



1 in = 0.38 miles
Datum: North American 1983
Units: Foot US
Author: Blue Team GIS

12/11/2016