



Chestnut Knob IAP Map

NC-NCS_160043

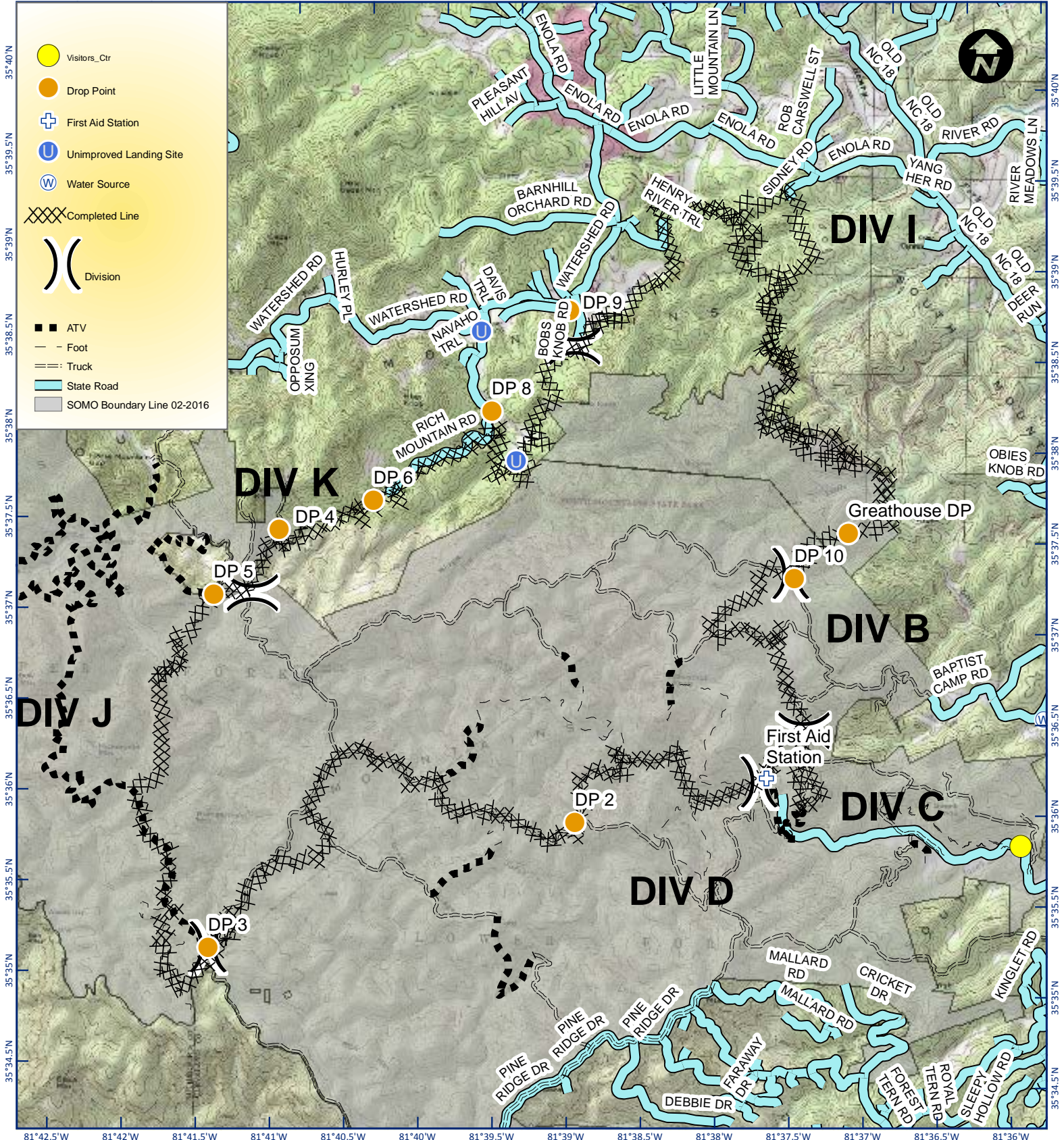
Appr. acres: 6,433



Nov. 21 2016

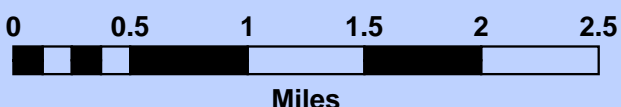
0700-0700

81°42.5'W 81°42'W 81°41.5'W 81°41'W 81°40.5'W 81°40'W 81°39.5'W 81°39'W 81°38.5'W 81°38'W 81°37.5'W 81°37'W 81°36.5'W 81°36'W



Legend

- Visitors_Ctr
- Drop Point
- First Aid Station
- Unimproved Landing Site
- Water Source
- Completed Line
- Division
- ATV
- Foot
- Truck
- State Road
- SOMO Boundary Line 02-2016



Perimeters shown are based on the best available information at the time of map production.
Latest intel collected Nov 20, 2016

Nov 20, 2016 1144 hrs
Map Datum: NAD83 SP Meters
Author: Florida Green Team