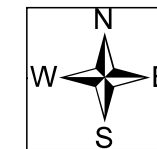
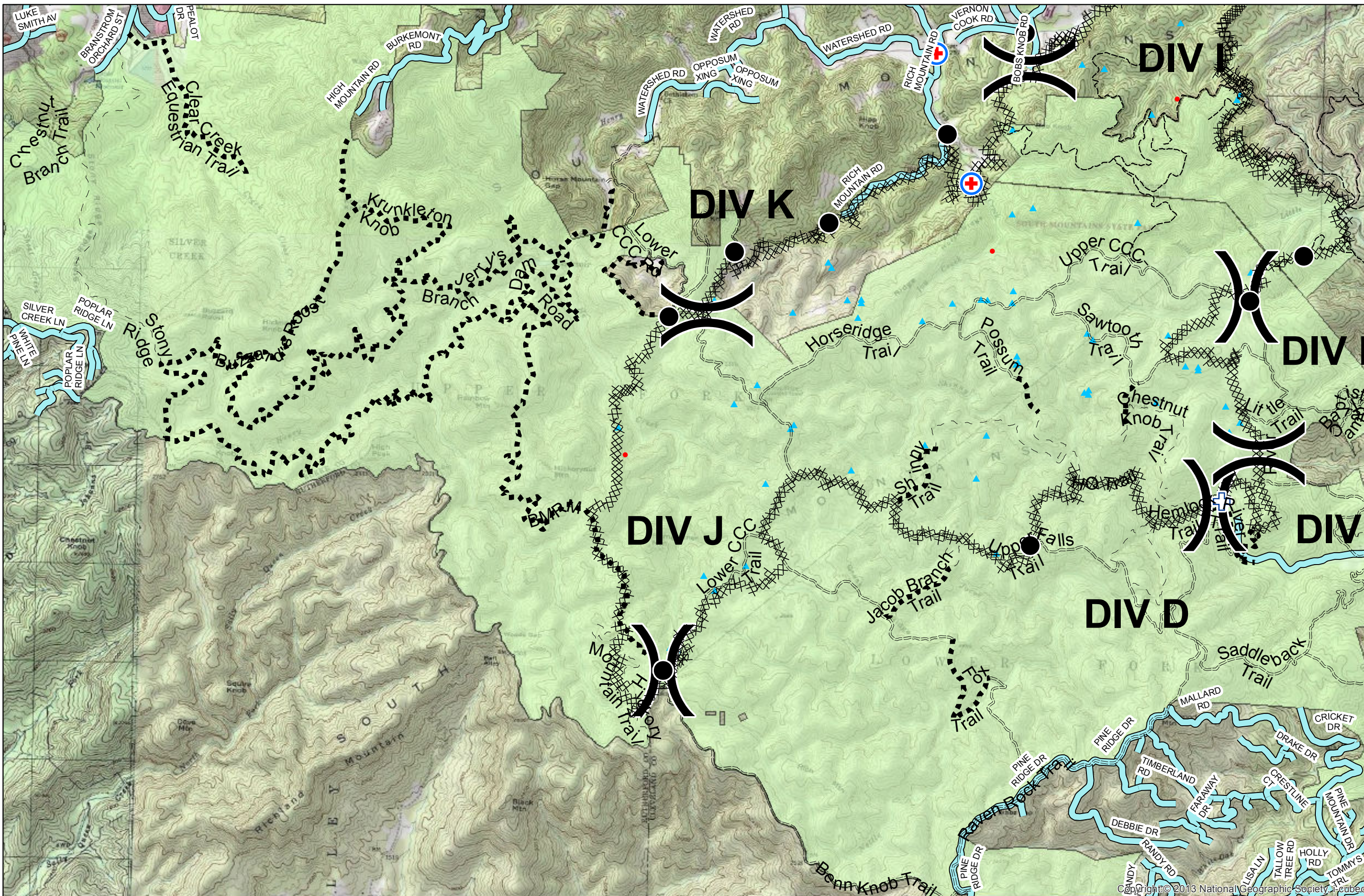


Chestnut Knob Operations Map, Division Grid

NC-NCS-1600043; Appr. acres: 6,435
Operational Period: 11/25/2016 ; 0700 - 1900



JK



- Drop Point
- + First Aid Station
- + MedVac Site
- P Pump
- W Water Source
- XX Completed Line
- SOMOTrails2012
- Park Trails
 - ATV
 - Foot
 - Truck
 - Simms Hill Trail System 2-2016
 - State Road
 - 20161125_0257_ChestnutKnob_IR_IsolatedHeatSources
 - ▲ 20161125_0257_ChestnutKnob_IR_PossibleHeatSources
 - SOMO Boundary