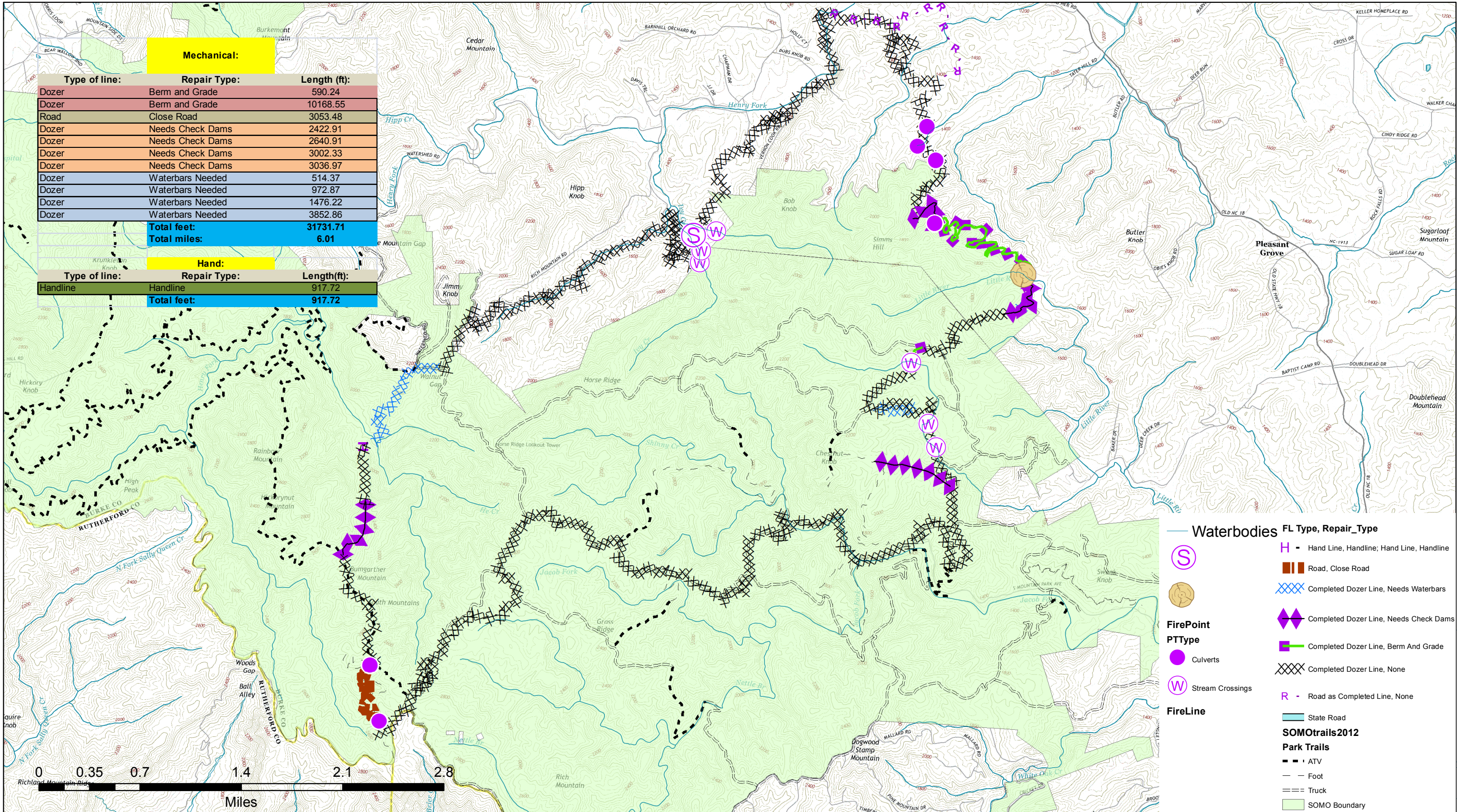
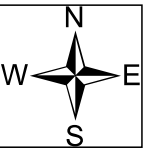




Chestnut Knob Restoration Map

NC-NCS-1600043; Appr. acres: 5,435
Operational Period: 11/27/2016 ; 0700 - 1900



Mechanical:

Type of line:	Repair Type:	Length (ft):
Dozer	Berm and Grade	590.24
Dozer	Berm and Grade	10168.55
Road	Close Road	3053.48
Dozer	Needs Check Dams	2422.91
Dozer	Needs Check Dams	2640.91
Dozer	Needs Check Dams	3002.33
Dozer	Needs Check Dams	3036.97
Dozer	Waterbars Needed	514.37
Dozer	Waterbars Needed	972.87
Dozer	Waterbars Needed	1476.22
Dozer	Waterbars Needed	3852.86
Total feet:		31731.71
Total miles:		6.01

Hand:

Type of line:	Repair Type:	Length(ft):
Handline	Handline	917.72
Total feet:		917.72

Waterbodies

FL Type, Repair_Type

- H - Hand Line, Handline; Hand Line, Handline
- Road, Close Road
- Completed Dozer Line, Needs Waterbars
- Completed Dozer Line, Needs Check Dams
- Completed Dozer Line, Berm And Grade
- Completed Dozer Line, None
- R - Road as Completed Line, None

FirePoint

PTType

- Culverts
- Stream Crossings

FireLine

- State Road

SOMOtrails2012

Park Trails

- ATV
- Foot
- Truck
- SOMO Boundary

Date: 11/26/2016

Author: Florida Green Team