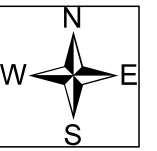




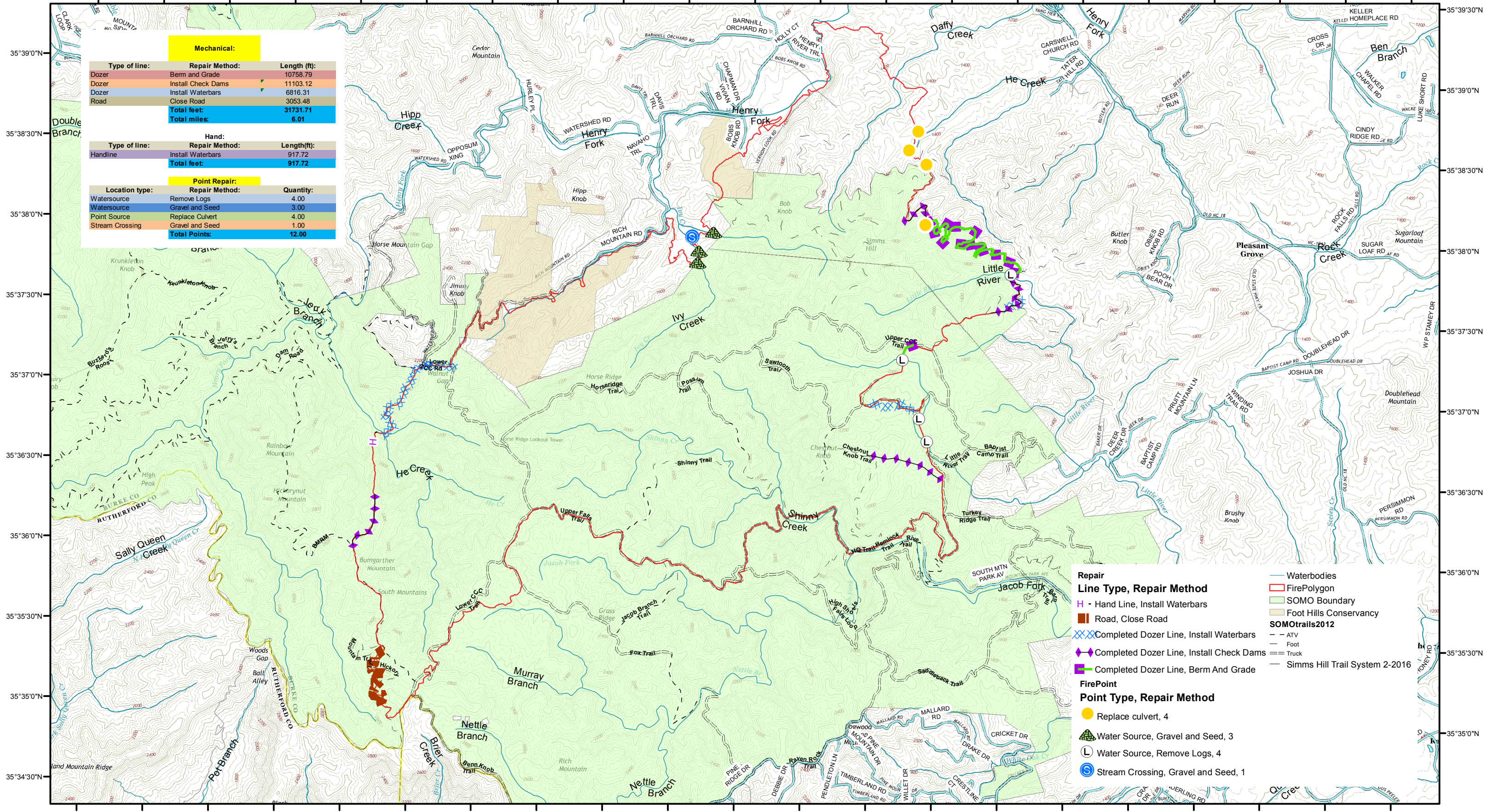
Chestnut Knob Repair Map

NC-NCS-1600043; Appr. acres: 5,435

Operational Period: 11/27/2016 ; 0700 - 1900



81°44'0"W 81°43'30"W 81°43'0"W 81°42'30"W 81°42'0"W 81°41'30"W 81°41'0"W 81°40'30"W 81°40'0"W 81°39'30"W 81°39'0"W 81°38'30"W 81°38'0"W 81°37'30"W 81°37'0"W 81°36'30"W 81°36'0"W 81°35'30"W 81°35'0"W 81°34'30"W 81°34'0"W



Mechanical:		
Type of line:	Repair Method:	Length (ft):
Dozer	Berm and Grade	10758.79
Dozer	Install Check Dams	11103.12
Dozer	Install Waterbars	6816.31
Road	Close Road	3053.48
Total feet:		31731.71
Total miles:		6.01

Hand:		
Type of line:	Repair Method:	Length(ft):
Handline	Install Waterbars	917.72
Total feet:		917.72

Point Repair:		
Location type:	Repair Method:	Quantity:
Watersource	Remove Logs	4.00
Watersource	Gravel and Seed	3.00
Point Source	Replace Culvert	4.00
Stream Crossing	Gravel and Seed	1.00
Total Points:		12.00

Repair		Waterbodies
Line Type, Repair Method		FirePolygon
H - Hand Line, Install Waterbars		SOMO Boundary
Road, Close Road		Foot Hills Conservancy
Completed Dozer Line, Install Waterbars		SOMOTrails2012
Completed Dozer Line, Install Check Dams		ATV
Completed Dozer Line, Berm And Grade		Foot
		Truck
		Simms Hill Trail System 2-2016
FirePoint		
Point Type, Repair Method		
Replace culvert, 4		
Water Source, Gravel and Seed, 3		
Water Source, Remove Logs, 4		
Stream Crossing, Gravel and Seed, 1		

