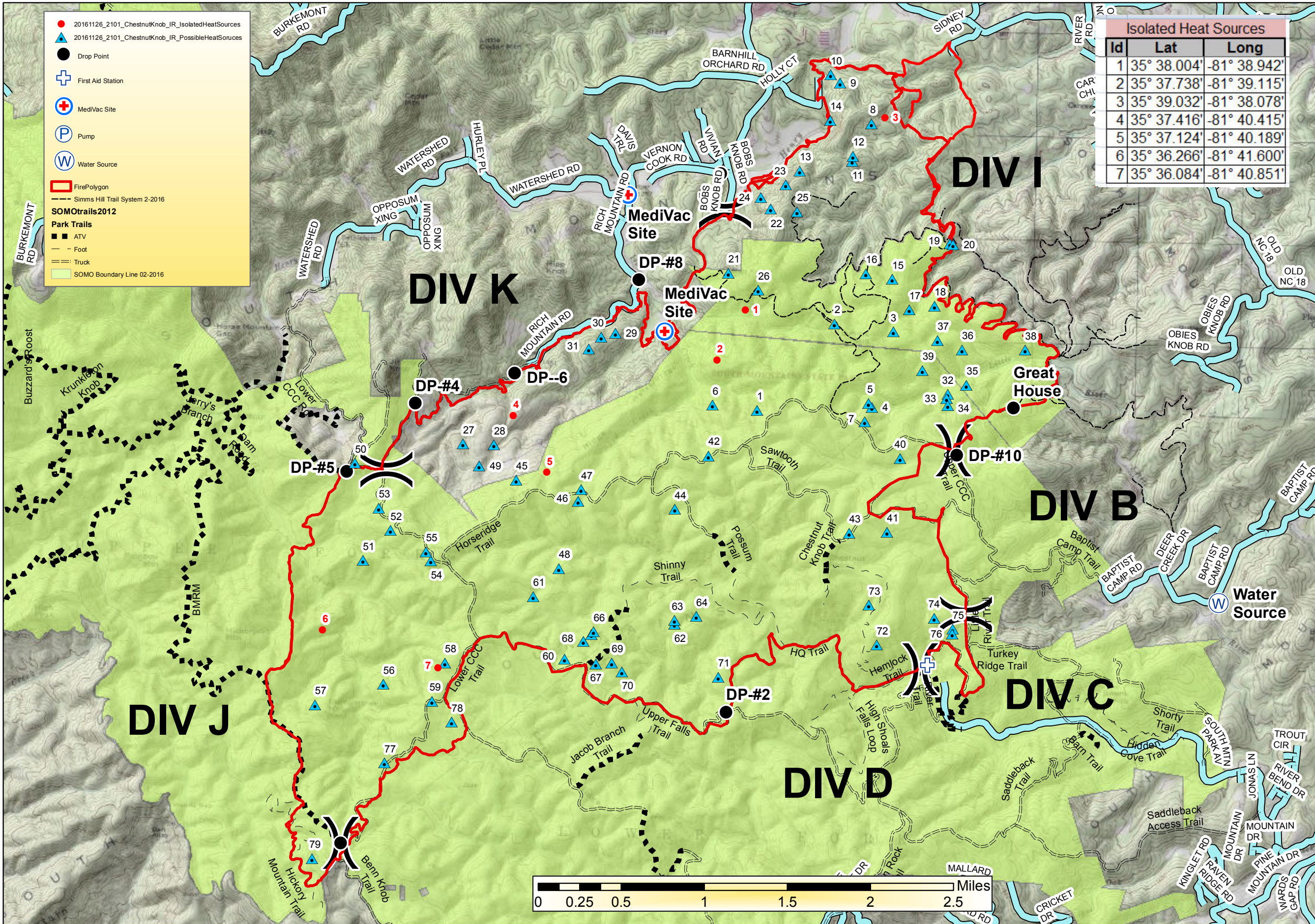


Chestnut Knob, IR Current Possible Heat Sources

NC-NCS-160043; Appr Acres: 6,435
Operational Period: 11/27/16; 0700 - 1900



Legend

- 20161126_2101_ChestnutKnob_IR_IsolatedHeatSources
- ▲ 20161126_2101_ChestnutKnob_IR_PossibleHeatSources
- Drop Point
- ⊕ First Aid Station
- ⊕ MediVac Site
- P Pump
- W Water Source
- ▭ FirePolygon
- Simms Hill Trail System 2-2016
- SOMOTrails2012
- ▭ Park Trails
 - ▭ ATV
 - Foot
 - Truck
- ▭ SOMO Boundary Line 02-2016

Isolated Heat Sources		
Id	Lat	Long
1	35° 38.004'	-81° 38.942'
2	35° 37.738'	-81° 39.115'
3	35° 39.032'	-81° 38.078'
4	35° 37.416'	-81° 40.415'
5	35° 37.124'	-81° 40.189'
6	35° 36.266'	-81° 41.600'
7	35° 36.084'	-81° 40.851'

Possible Heat Sources		
Id	Lat	Long
1	35° 37.481'	-81° 38.851'
2	35° 37.943'	-81° 38.366'
3	35° 37.911'	-81° 37.990'
4	35° 37.511'	-81° 38.114'
5	35° 37.532'	-81° 38.138'
6	35° 37.501'	-81° 39.137'
7	35° 37.434'	-81° 38.158'
8	35° 38.997'	-81° 38.165'
9	35° 39.205'	-81° 38.373'
10	35° 39.248'	-81° 38.435'
11	35° 38.797'	-81° 38.283'
12	35° 38.825'	-81° 38.279'
13	35° 38.738'	-81° 38.618'
14	35° 39.010'	-81° 38.431'
15	35° 38.185'	-81° 38.005'
16	35° 38.210'	-81° 38.175'
17	35° 38.027'	-81° 37.890'
18	35° 38.051'	-81° 37.730'
19	35° 38.380'	-81° 37.641'
20	35° 38.374'	-81° 37.620'
21	35° 38.195'	-81° 39.058'
22	35° 38.535'	-81° 38.798'
23	35° 38.665'	-81° 38.704'
24	35° 38.595'	-81° 38.863'
25	35° 38.526'	-81° 38.627'
26	35° 38.109'	-81° 38.862'
27	35° 37.262'	-81° 40.732'
28	35° 37.260'	-81° 40.531'
29	35° 37.863'	-81° 39.772'
30	35° 37.842'	-81° 39.864'
31	35° 37.777'	-81° 39.941'
32	35° 37.589'	-81° 37.629'
33	35° 37.568'	-81° 37.637'
34	35° 37.530'	-81° 37.628'
35	35° 37.641'	-81° 37.511'
36	35° 37.824'	-81° 37.545'
37	35° 37.871'	-81° 37.705'
38	35° 37.831'	-81° 37.141'
39	35° 37.711'	-81° 37.795'
40	35° 37.248'	-81° 37.925'
41	35° 36.859'	-81° 37.995'
42	35° 37.234'	-81° 39.154'
43	35° 36.849'	-81° 38.238'
44	35° 36.950'	-81° 39.361'
45	35° 37.081'	-81° 40.382'
46	35° 36.979'	-81° 39.983'
47	35° 37.040'	-81° 39.964'
48	35° 36.623'	-81° 40.095'
49	35° 37.149'	-81° 40.622'
50	35° 37.147'	-81° 41.420'
51	35° 36.638'	-81° 41.354'
52	35° 36.799'	-81° 41.180'
53	35° 36.915'	-81° 41.261'
54	35° 36.646'	-81° 40.917'
55	35° 36.691'	-81° 40.949'
56	35° 35.991'	-81° 41.201'
57	35° 35.874'	-81° 41.635'
58	35° 36.112'	-81° 40.806'
59	35° 35.910'	-81° 40.884'
60	35° 36.149'	-81° 40.043'
61	35° 36.472'	-81° 40.255'
62	35° 36.347'	-81° 39.344'
63	35° 36.366'	-81° 39.344'
64	35° 36.391'	-81° 39.205'
65	35° 36.283'	-81° 39.875'
66	35° 36.296'	-81° 39.862'
67	35° 36.130'	-81° 39.842'
68	35° 36.246'	-81° 39.924'
69	35° 36.136'	-81° 39.738'
70	35° 36.091'	-81° 39.673'
71	35° 36.076'	-81° 39.055'
72	35° 36.267'	-81° 38.043'
73	35° 36.475'	-81° 38.100'
74	35° 36.415'	-81° 37.680'
75	35° 36.360'	-81° 37.557'
76	35° 36.334'	-81° 37.559'
77	35° 35.580'	-81° 41.178'
78	35° 35.803'	-81° 40.755'
79	35° 35.069'	-81° 41.627'