



# Chestnut Knob IAP Map

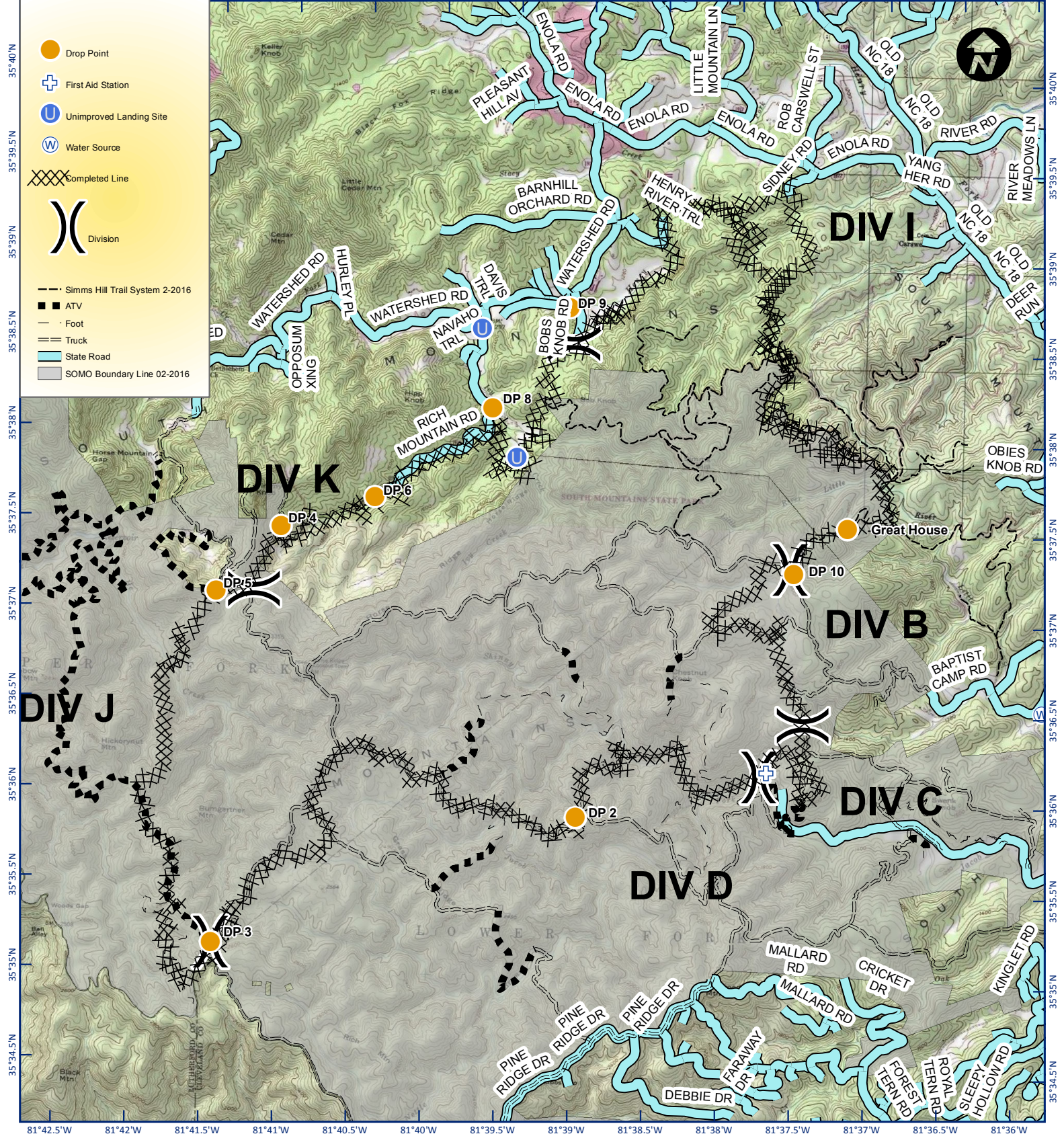
NC-NCS\_160043  
Appr. acres: 6,435



Nov. 28 2016

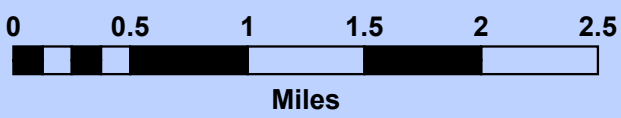
0700-1900

81°42.5'W 81°42'W 81°41.5'W 81°41'W 81°40.5'W 81°40'W 81°39.5'W 81°39'W 81°38.5'W 81°38'W 81°37.5'W 81°37'W 81°36.5'W 81°36'W



- Drop Point
- First Aid Station
- Unimproved Landing Site
- Water Source
- Completed Line
- Division
- Simms Hill Trail System 2-2016
- ATV
- Foot
- Truck
- State Road
- SOMO Boundary Line 02-2016

35°40'N 35°39.5'N 35°39'N 35°38.5'N 35°38'N 35°37.5'N 35°37'N 35°36.5'N 35°36'N 35°35.5'N 35°35'N 35°34.5'N



Perimeters shown are based on the best available information at the time of map production. Latest intel collected Nov 27, 2016

Nov 27, 2016 1656 hrs  
Map Datum: NAD83 SP Meters  
Author: Florida Green Team