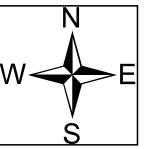




Chestnut Knob Repair Map

NC-NCS-16-0043; Appr. acres: 6,435

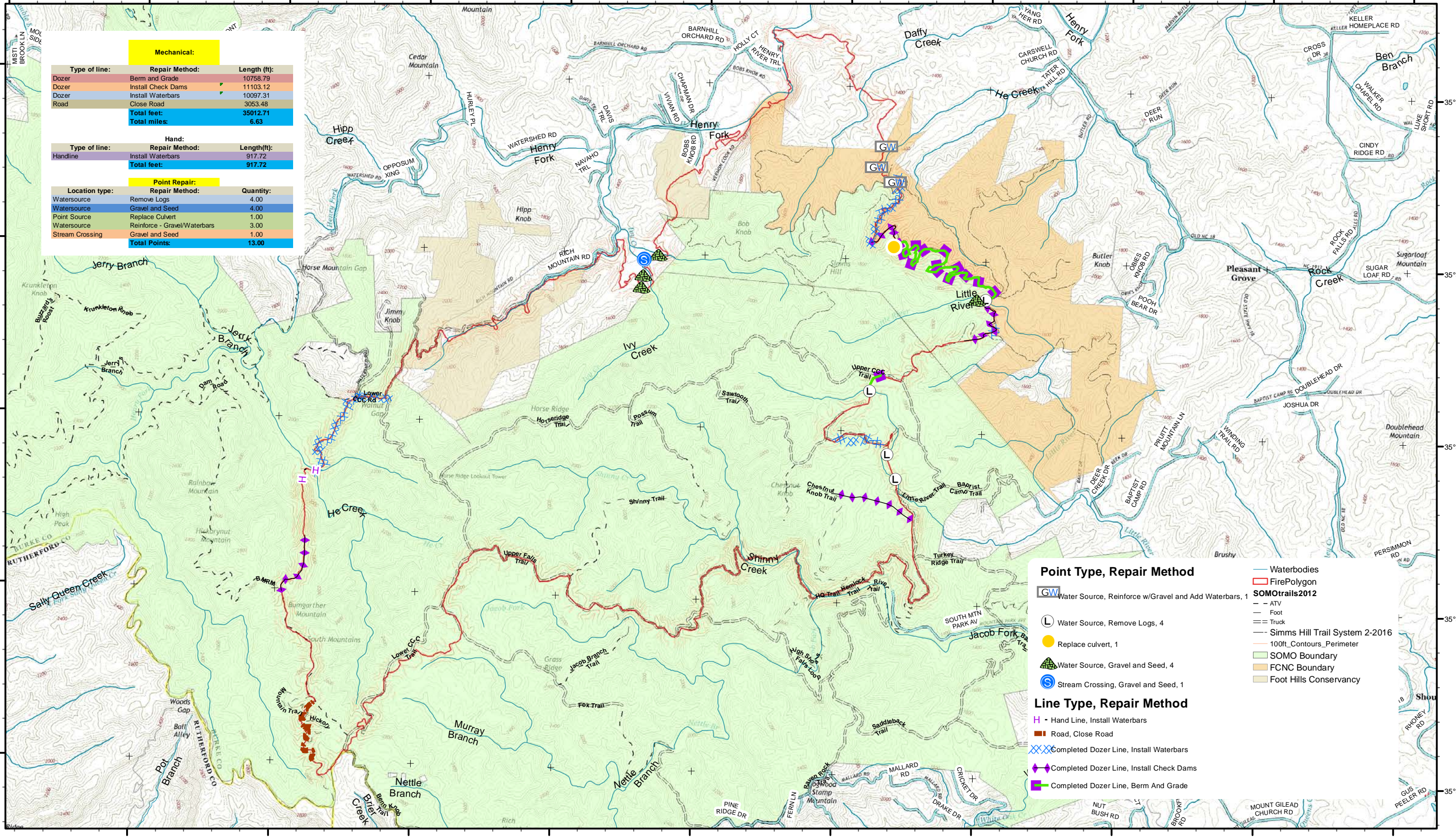


81°44'0"W 81°43'0"W 81°42'0"W 81°41'0"W 81°40'0"W 81°39'0"W 81°38'0"W 81°37'0"W 81°36'0"W 81°35'0"W 81°34'0"W

Mechanical:		
Type of line:	Repair Method:	Length (ft):
Dozer	Berm and Grade	10758.79
Dozer	Install Check Dams	11103.12
Dozer	Install Waterbars	10097.31
Road	Close Road	3053.48
Total feet:		35012.71
Total miles:		6.63

Hand:		
Type of line:	Repair Method:	Length (ft):
Handline	Install Waterbars	917.72
Total feet:		917.72

Point Repair:		
Location type:	Repair Method:	Quantity:
Watersource	Remove Logs	4.00
Watersource	Gravel and Seed	4.00
Point Source	Replace Culvert	1.00
Watersource	Reinforce - Gravel/Waterbars	3.00
Stream Crossing	Gravel and Seed	1.00
Total Points:		13.00



Point Type, Repair Method

- GW** Water Source, Reinforce w/Gravel and Add Waterbars, 1
- L** Water Source, Remove Logs, 4
- Yellow Circle** Replace culvert, 1
- Green Triangle** Water Source, Gravel and Seed, 4
- S** Stream Crossing, Gravel and Seed, 1

Line Type, Repair Method

- H** Hand Line, Install Waterbars
- R** Road, Close Road
- Blue X's** Completed Dozer Line, Install Waterbars
- Purple Triangles** Completed Dozer Line, Install Check Dams
- Green Line** Completed Dozer Line, Berm And Grade

Waterbodies

- Blue line: Waterbodies

FirePolygon

- Red outline: FirePolygon

SOMotrails2012

- Dashed line: ATV
- Dotted line: Foot
- Double line: Truck
- Long dashed line: Simms Hill Trail System 2-2016
- Orange outline: 100ft_Contours_Perimeter
- Light green fill: SOMO Boundary
- Light orange fill: FCNC Boundary
- Light brown fill: Foot Hills Conservancy

