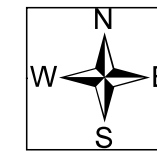


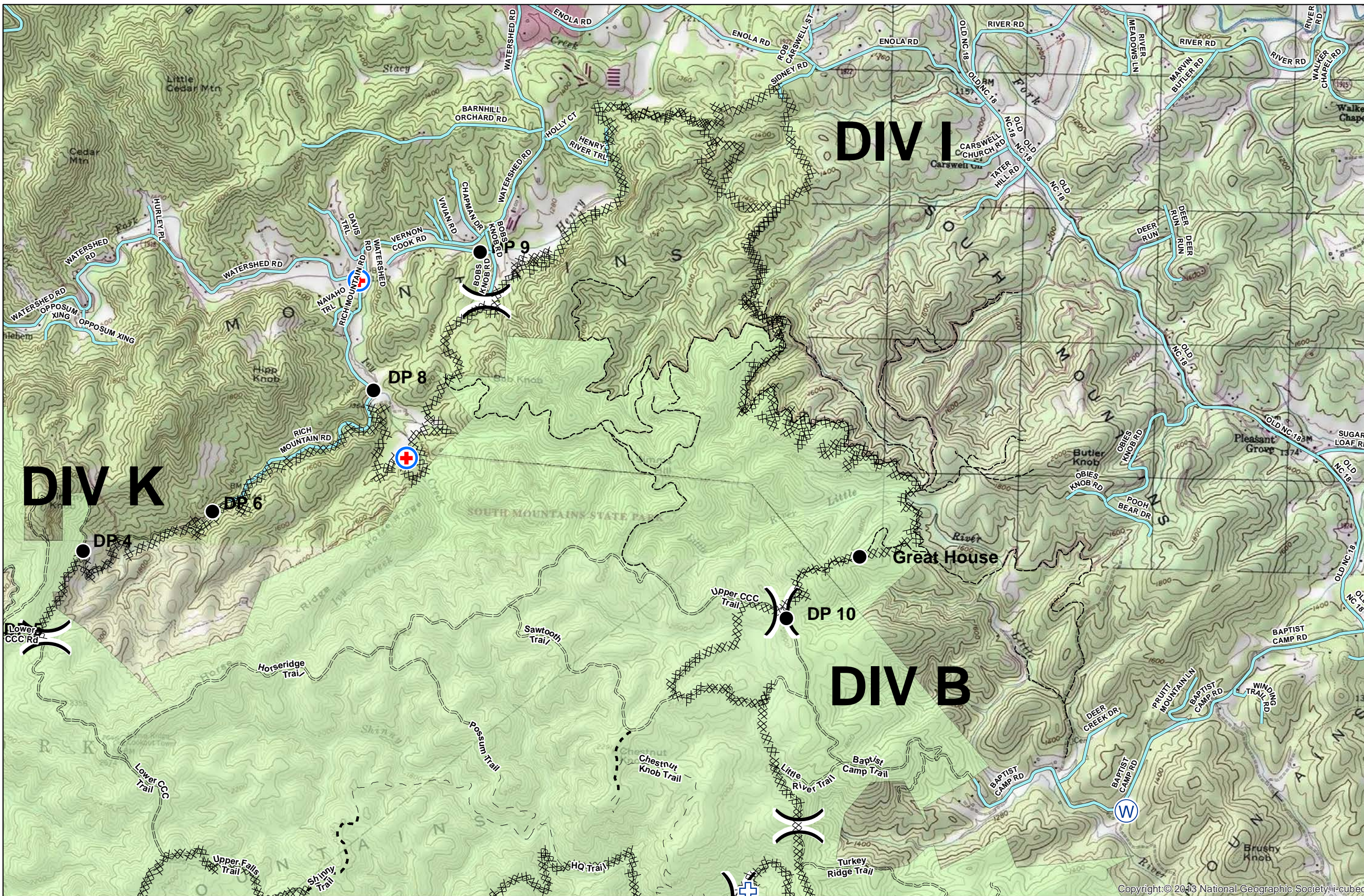
# Chestnut Knob Operations Map, Division Grid

NC-NCS-1600043; Appr. acres: 6,435

Operational Period: 0700 - 1900



# IB

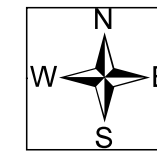


●	Drop Point
+	First Aid Station
+	Med/Vac Site
P	Pump
W	Water Source
⊗	Completed Line
<b>SOMOTrails2012</b>	
■	ATV
—	Foot
—	Truck
—	Simms Hill Trail System 2016
—	State Road
—	SOMO boundary

# Chestnut Knob Operations Map, Division Grid

NC-NCS-1600043; Appr. acres: 6,435

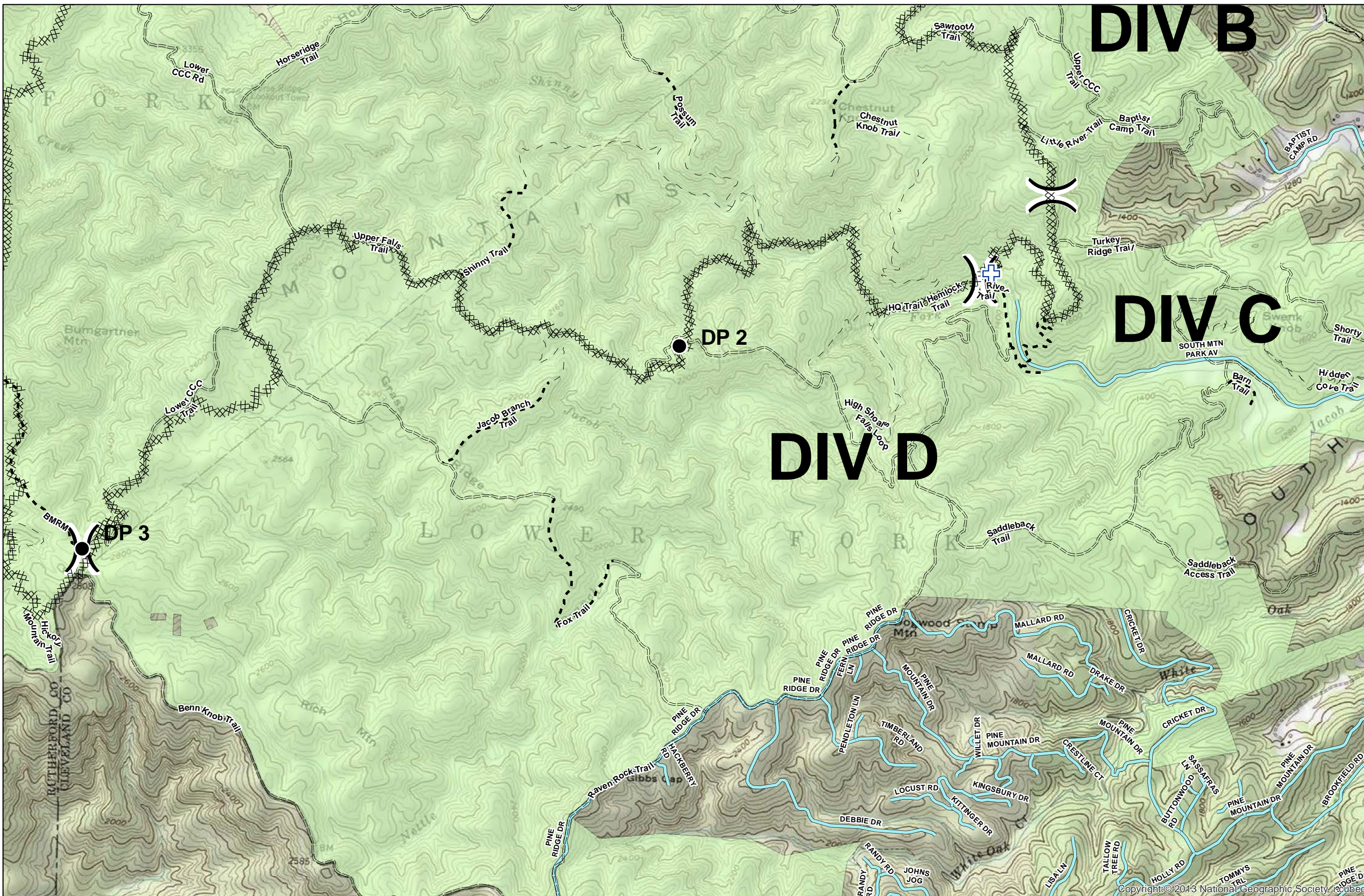
Operational Period: 0700 - 1900



# CD



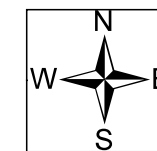
- Drop Point
- ⊕ First Aid Station
- ⊕ Med/Vac Site
- P Pump
- W Water Source
- ⊗ Completed Line
- SOMOTrails2012**
- Park Trails
  - ATV
  - Foot
  - Truck
  - Simms Hill Trail System 2016
  - State Road
  - SOMO boundary



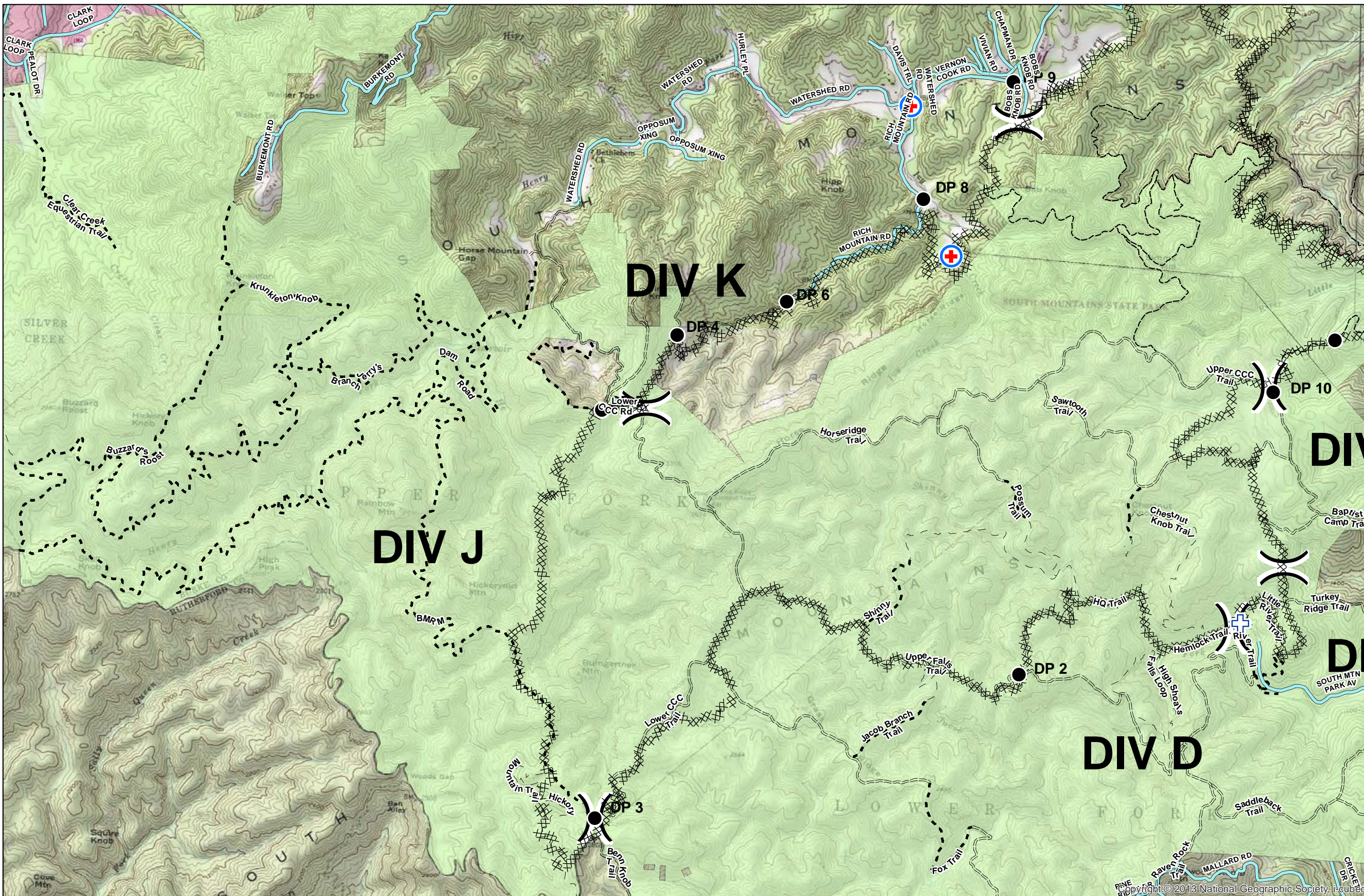
# Chestnut Knob Operations Map, Division Grid

NC-NCS-1600043; Appr. acres: 6,435

Operational Period: 0700 - 1900



# JK



- Drop Point
- ⊕ First Aid Station
- ⊕ Med/Vac Site
- P Pump
- W Water Source
- ⊗ Completed Line
- SOMOtrails2012
  - Park Trails
    - ATV
    - Foot
    - Truck
  - Simms Hill Trail System 2016
  - State Road
  - SOMO Boundary