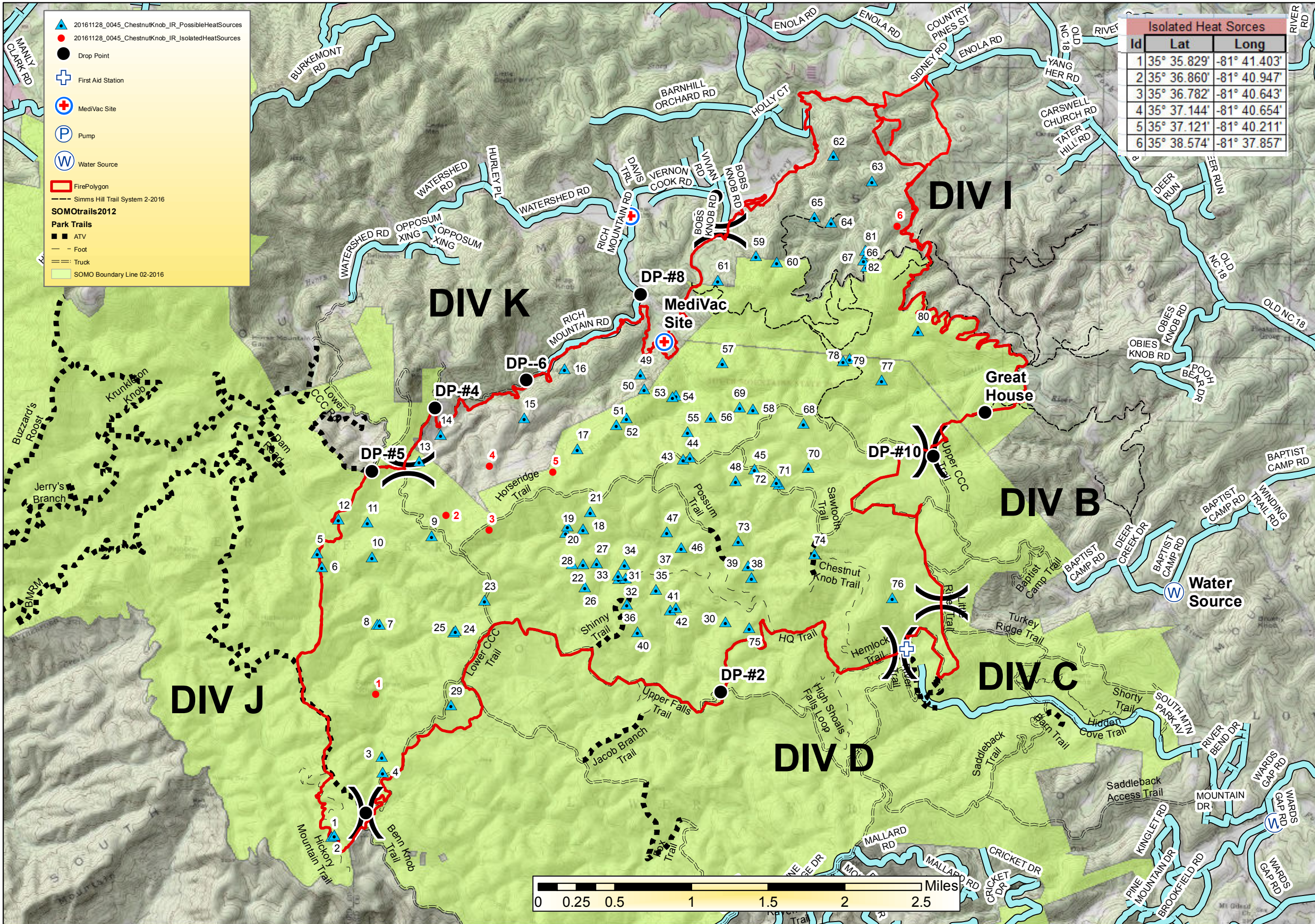


Chestnut Knob, IR Current Possible Heat Sources

NC-NCS-160043; Appr Acres: 6,435
Operational Period: 11/28/16; 0700 - 1900



Isolated Heat Sources		
Id	Lat	Long
1	35° 35.829'	-81° 41.403'
2	35° 36.860'	-81° 40.947'
3	35° 36.782'	-81° 40.643'
4	35° 37.144'	-81° 40.654'
5	35° 37.121'	-81° 40.211'
6	35° 38.574'	-81° 37.857'

Possible heat sources		
Id	Lat	Long
1	35° 35.014'	-81° 41.685'
2	35° 35.025'	-81° 41.666'
3	35° 35.478'	-81° 41.349'
4	35° 35.389'	-81° 41.340'
5	35° 36.625'	-81° 41.838'
6	35° 36.547'	-81° 41.803'
7	35° 36.229'	-81° 41.405'
8	35° 36.229'	-81° 41.390'
9	35° 36.743'	-81° 41.042'
10	35° 36.614'	-81° 41.455'
11	35° 36.811'	-81° 41.494'
12	35° 36.822'	-81° 41.696'
13	35° 37.167'	-81° 41.145'
14	35° 37.320'	-81° 41.000'
15	35° 37.427'	-81° 40.420'
16	35° 37.712'	-81° 40.149'
17	35° 37.259'	-81° 40.043'
18	35° 36.806'	-81° 39.991'
19	35° 36.781'	-81° 40.111'
20	35° 36.818'	-81° 40.097'
21	35° 36.903'	-81° 39.944'
22	35° 36.604'	-81° 40.059'
23	35° 36.383'	-81° 40.662'
24	35° 36.197'	-81° 40.873'
25	35° 36.205'	-81° 40.859'
26	35° 36.474'	-81° 39.955'
27	35° 36.614'	-81° 39.890'
28	35° 36.605'	-81° 39.983'
29	35° 35.781'	-81° 40.877'
30	35° 36.298'	-81° 38.979'
31	35° 36.527'	-81° 39.733'
32	35° 36.531'	-81° 39.683'
33	35° 36.547'	-81° 39.736'
34	35° 36.610'	-81° 39.693'
35	35° 36.470'	-81° 39.459'
36	35° 36.383'	-81° 39.670'
37	35° 36.564'	-81° 39.447'
38	35° 36.553'	-81° 38.808'
39	35° 36.619'	-81° 38.832'
40	35° 36.226'	-81° 39.591'
41	35° 36.355'	-81° 39.367'
42	35° 36.369'	-81° 39.327'
43	35° 37.215'	-81° 39.305'
44	35° 37.230'	-81° 39.259'
45	35° 37.170'	-81° 38.806'
46	35° 36.712'	-81° 39.301'
47	35° 36.801'	-81° 39.404'
48	35° 37.101'	-81° 38.935'
49	35° 37.695'	-81° 39.619'
50	35° 37.612'	-81° 39.590'
51	35° 37.403'	-81° 39.778'
52	35° 37.443'	-81° 39.708'
53	35° 37.580'	-81° 39.366'
54	35° 37.571'	-81° 39.390'
55	35° 37.373'	-81° 39.279'
56	35° 37.458'	-81° 39.121'
57	35° 37.772'	-81° 39.050'
58	35° 37.515'	-81° 38.827'
59	35° 38.386'	-81° 38.834'
60	35° 38.353'	-81° 38.689'
61	35° 38.241'	-81° 39.096'
62	35° 38.967'	-81° 38.313'
63	35° 38.830'	-81° 38.040'
64	35° 38.586'	-81° 38.316'
65	35° 38.617'	-81° 38.435'
66	35° 38.341'	-81° 38.061'
67	35° 38.376'	-81° 38.085'
68	35° 37.438'	-81° 38.471'
69	35° 37.520'	-81° 38.920'
70	35° 37.188'	-81° 38.431'
71	35° 37.087'	-81° 38.631'
72	35° 37.103'	-81° 38.651'
73	35° 36.760'	-81° 38.905'
74	35° 36.696'	-81° 38.371'
75	35° 36.266'	-81° 38.813'
76	35° 36.458'	-81° 37.820'
77	35° 37.697'	-81° 37.936'
78	35° 37.815'	-81° 38.164'
79	35° 37.801'	-81° 38.208'
80	35° 37.984'	-81° 37.693'
81	35° 38.434'	-81° 38.071'
82	35° 38.416'	-81° 38.053'

