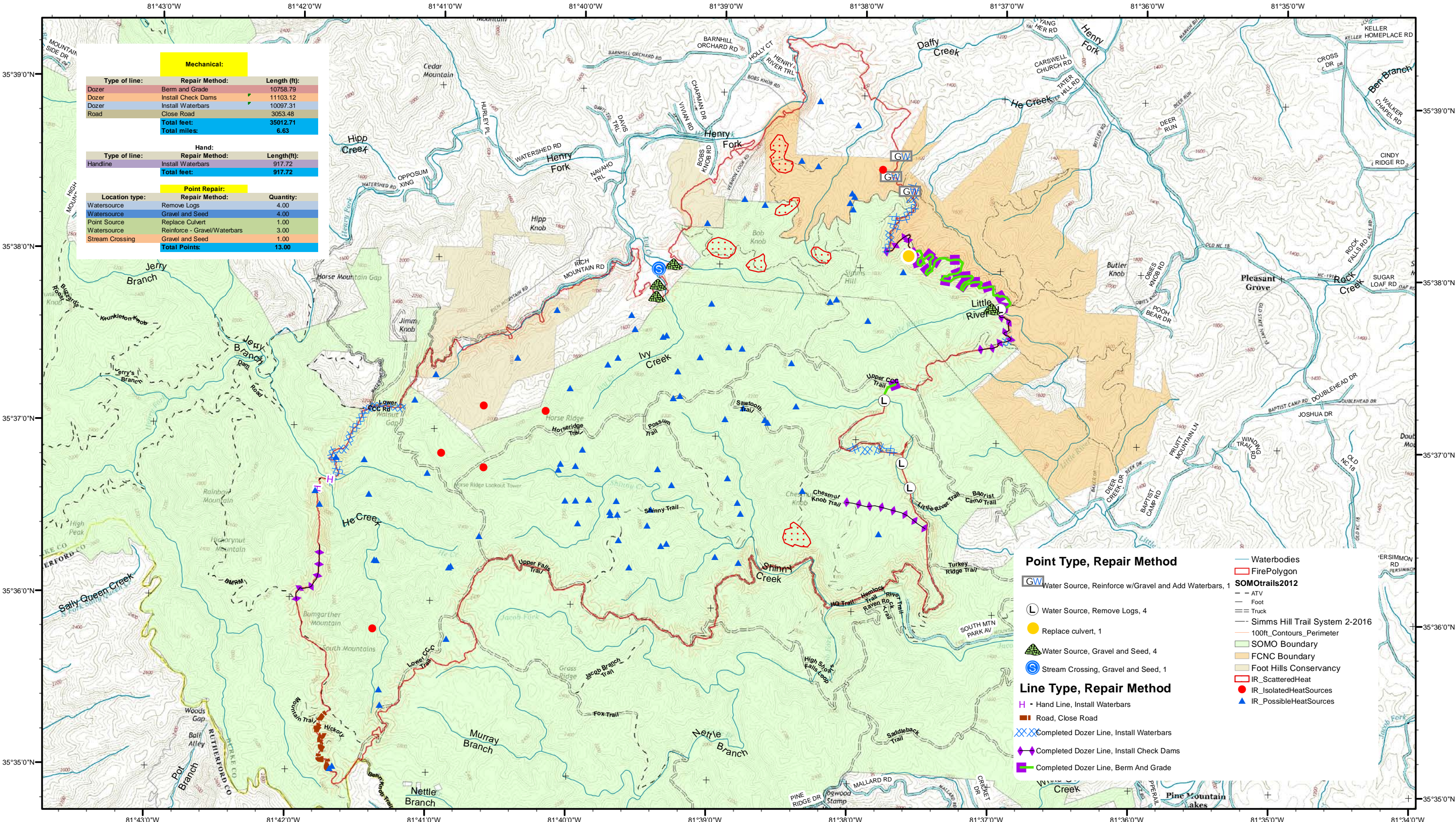
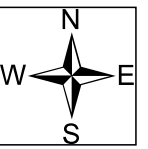


# Chestnut Knob Repair Map

NC-NCS-16-0043; Appr. acres: 6,435



Mechanical:		
Type of line:	Repair Method:	Length (ft):
Dozer	Berm and Grade	10758.79
Dozer	Install Check Dams	11103.12
Dozer	Install Waterbars	10097.31
Road	Close Road	3053.48
<b>Total feet:</b>		<b>35012.71</b>
<b>Total miles:</b>		<b>6.63</b>

Hand:		
Type of line:	Repair Method:	Length (ft):
Handline	Install Waterbars	917.72
<b>Total feet:</b>		<b>917.72</b>

Point Repair:		
Location type:	Repair Method:	Quantity:
Watersource	Remove Logs	4.00
Watersource	Gravel and Seed	4.00
Point Source	Replace Culvert	1.00
Watersource	Reinforce - Gravel/Waterbars	3.00
Stream Crossing	Gravel and Seed	1.00
<b>Total Points:</b>		<b>13.00</b>

**Point Type, Repair Method**

- GW Water Source, Reinforce w/Gravel and Add Waterbars, 1
- L Water Source, Remove Logs, 4
- Replace culvert, 1
- ▲ Water Source, Gravel and Seed, 4
- ⊙ Stream Crossing, Gravel and Seed, 1

**Line Type, Repair Method**

- H - Hand Line, Install Waterbars
- Road, Close Road
- XXX Completed Dozer Line, Install Waterbars
- ◆ Completed Dozer Line, Install Check Dams
- ◆ Completed Dozer Line, Berm And Grade

**Waterbodies**

- Waterbodies
- Fire Polygon

**SOMO trails 2012**

- ATV
- Foot
- Truck
- Simms Hill Trail System 2-2016
- 100ft\_Contours\_Perimeter
- SOMO Boundary
- FCNC Boundary
- Foot Hills Conservancy
- IR\_ScatteredHeat
- IR\_IsolatedHeatSources
- ▲ IR\_PossibleHeatSources

