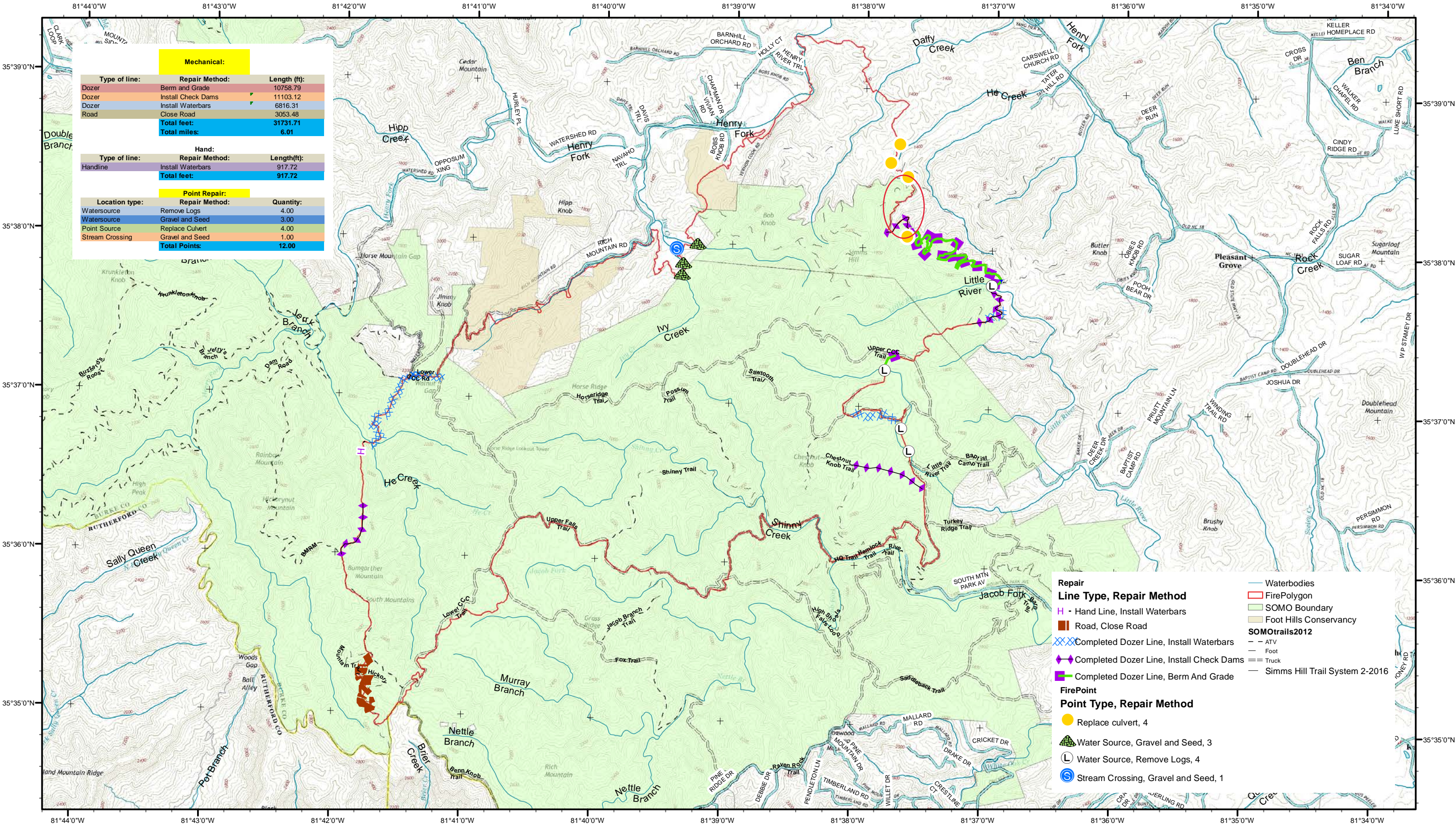
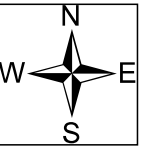


# Chestnut Knob Repair Map

NC-NCS-1600043; Appr. acres: 5,435  
Operational Period: 11/27/2016 ; 0700 - 1900



Mechanical:		
Type of line:	Repair Method:	Length (ft):
Dozer	Berm and Grade	10758.79
Dozer	Install Check Dams	11103.12
Dozer	Install Waterbars	6816.31
Road	Close Road	3053.48
<b>Total feet:</b>		<b>31731.71</b>
<b>Total miles:</b>		<b>6.01</b>

Hand:		
Type of line:	Repair Method:	Length(ft):
Handline	Install Waterbars	917.72
<b>Total feet:</b>		<b>917.72</b>

Point Repair:		
Location type:	Repair Method:	Quantity:
Watersource	Remove Logs	4.00
Watersource	Gravel and Seed	3.00
Point Source	Replace Culvert	4.00
Stream Crossing	Gravel and Seed	1.00
<b>Total Points:</b>		<b>12.00</b>

Repair	
<b>Line Type, Repair Method</b>	Waterbodies
H - Hand Line, Install Waterbars	FirePolygon
Road, Close Road	SOMO Boundary
Completed Dozer Line, Install Waterbars	Foot Hills Conservancy
Completed Dozer Line, Install Check Dams	SOMOTrails2012
Completed Dozer Line, Berm And Grade	- - ATV
	- Foot
	= Truck
	- Simms Hill Trail System 2-2016
<b>FirePoint</b>	
<b>Point Type, Repair Method</b>	
Replace culvert, 4	
Water Source, Gravel and Seed, 3	
Water Source, Remove Logs, 4	
Stream Crossing, Gravel and Seed, 1	

