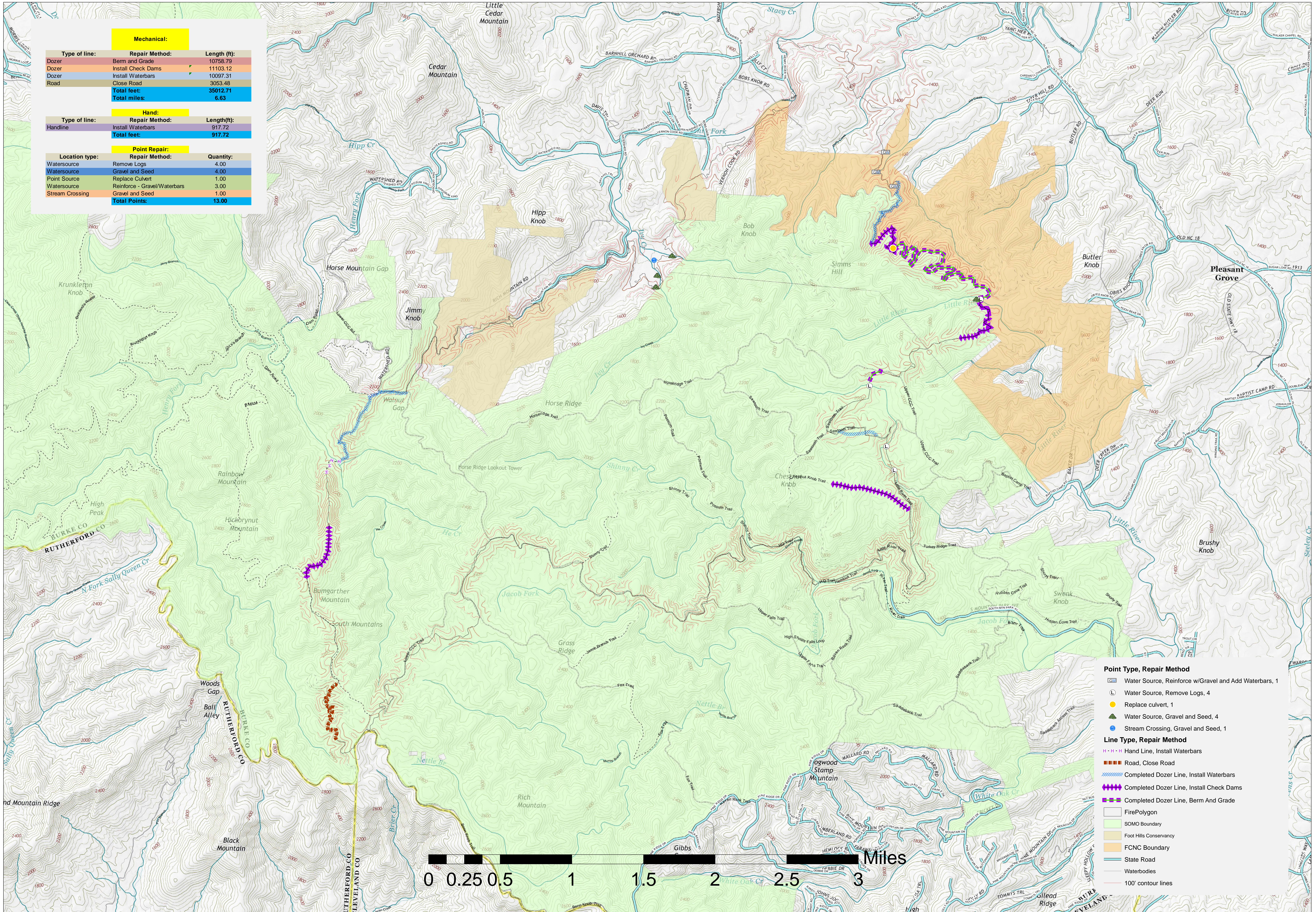
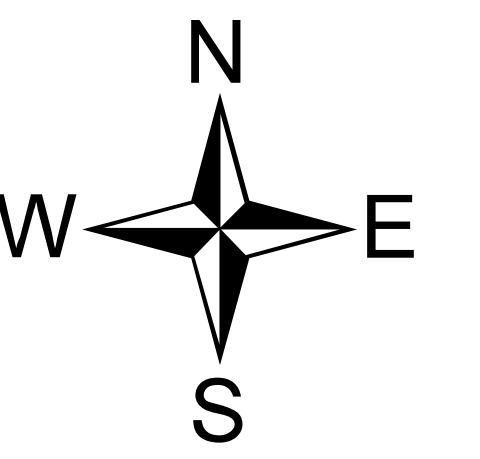


# Chestnut Knob Repair Map

NC-NCS-16-0043; Appr. acres: 6,435



Mechanical:		
Type of line:	Repair Method:	Length (ft):
Dozer	Berm and Grade	10758.79
Dozer	Install Check Dams	11103.12
Dozer	Install Waterbars	10097.31
Road	Close Road	3053.48
<b>Total feet:</b>		<b>35012.71</b>
<b>Total miles:</b>		<b>6.63</b>

Hand:		
Type of line:	Repair Method:	Length (ft):
Handline	Install Waterbars	917.72
<b>Total feet:</b>		<b>917.72</b>

Point Repair:		
Location type:	Repair Method:	Quantity:
Watersource	Remove Logs	4.00
Watersource	Gravel and Seed	4.00
Point Source	Replace Culvert	1.00
Watersource	Reinforce - Gravel/Waterbars	3.00
Stream Crossing	Gravel and Seed	1.00
<b>Total Points:</b>		<b>13.00</b>

**Point Type, Repair Method**

- Water Source, Reinforce w/Gravel and Add Waterbars, 1
- Water Source, Remove Logs, 4
- Replace culvert, 1
- Water Source, Gravel and Seed, 4
- Stream Crossing, Gravel and Seed, 1

**Line Type, Repair Method**

- Hand Line, Install Waterbars
- Road, Close Road
- Completed Dozer Line, Install Waterbars
- Completed Dozer Line, Install Check Dams
- Completed Dozer Line, Berm And Grade

**Other Symbols**

- FirePolygon
- SOMO Boundary
- Foot Hills Conservancy
- FCNC Boundary
- Slate Road
- Waterbodies
- 100' contour lines