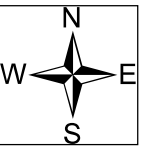




Chestnut Knob Repair Map

NC-NCS-16-0043; Appr. acres: 6,435

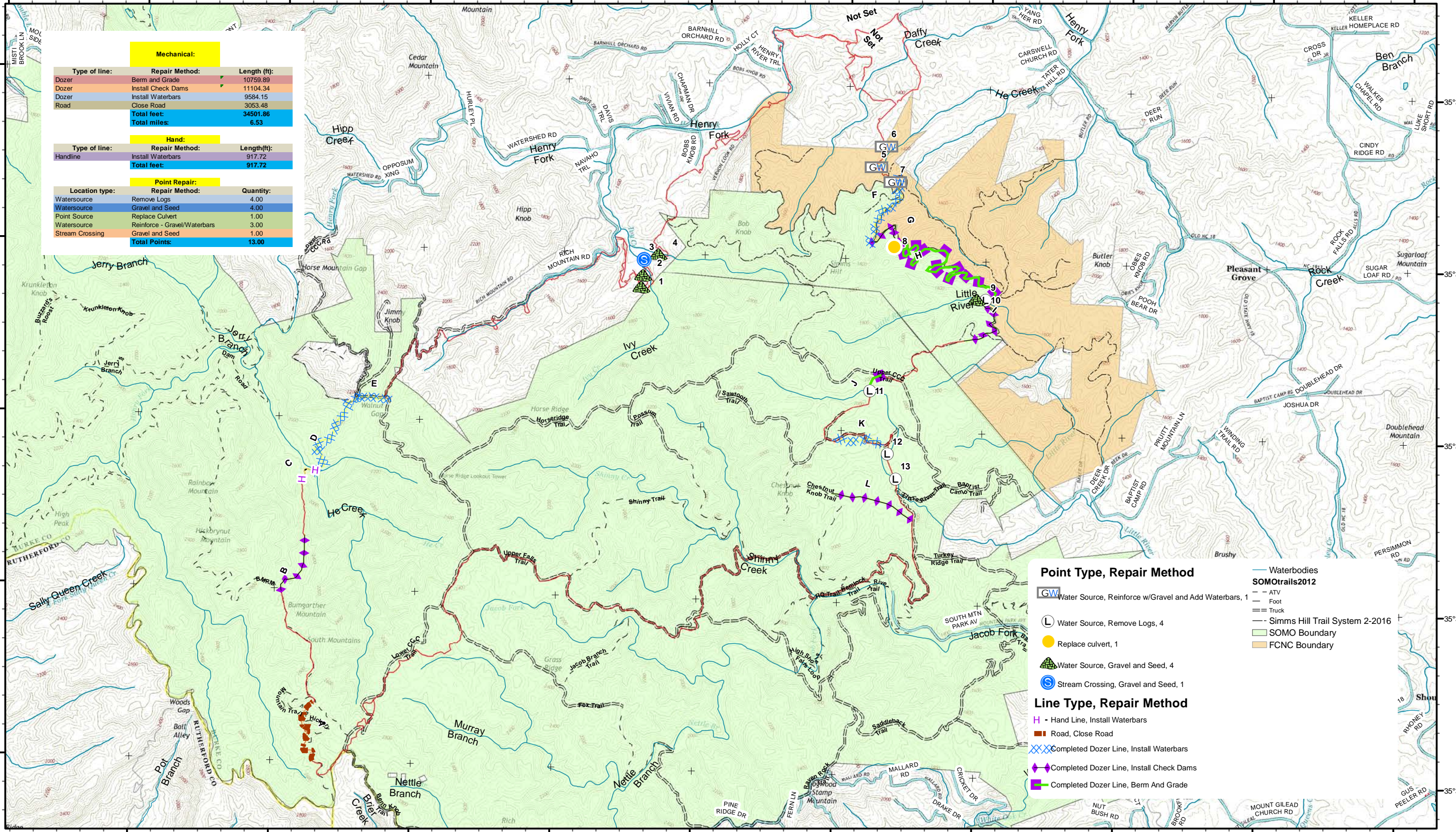


81°44'0"W 81°43'0"W 81°42'0"W 81°41'0"W 81°40'0"W 81°39'0"W 81°38'0"W 81°37'0"W 81°36'0"W 81°35'0"W 81°34'0"W

Mechanical:		
Type of line:	Repair Method:	Length (ft):
Dozer	Berm and Grade	10759.89
Dozer	Install Check Dams	11104.34
Dozer	Install Waterbars	9584.15
Road	Close Road	3053.48
Total feet:		34501.86
Total miles:		6.53

Hand:		
Type of line:	Repair Method:	Length (ft):
Handline	Install Waterbars	917.72
Total feet:		917.72

Point Repair:		
Location type:	Repair Method:	Quantity:
Watersource	Remove Logs	4.00
Watersource	Gravel and Seed	4.00
Point Source	Replace Culvert	1.00
Watersource	Reinforce - Gravel/Waterbars	3.00
Stream Crossing	Gravel and Seed	1.00
Total Points:		13.00



Point Type, Repair Method	
	Water Source, Reinforce w/Gravel and Add Waterbars, 1
	Water Source, Remove Logs, 4
	Replace culvert, 1
	Water Source, Gravel and Seed, 4
	Stream Crossing, Gravel and Seed, 1
Line Type, Repair Method	
	Hand Line, Install Waterbars
	Road, Close Road
	Completed Dozer Line, Install Waterbars
	Completed Dozer Line, Install Check Dams
	Completed Dozer Line, Berm And Grade

SOMOTrails2012	
	ATV
	Foot
	Truck
	Simms Hill Trail System 2-2016
	SOMO Boundary
	FCNC Boundary

