



Chestnut Knob IAP Map

NC-NCS-16-0043

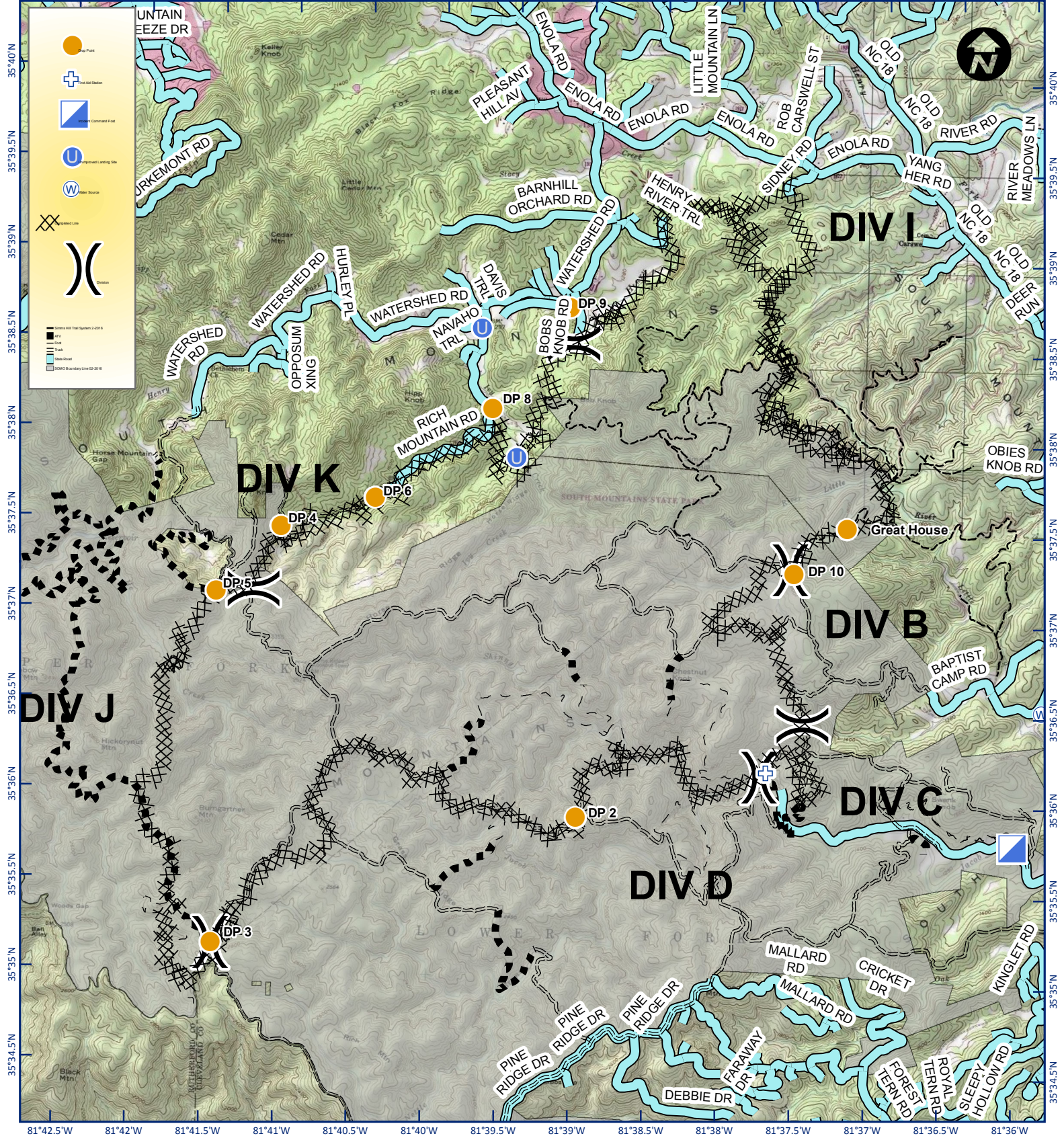
Appr. acres: 6,435



11/30/16

0700-1900

81°42.5'W 81°42'W 81°41.5'W 81°41'W 81°40.5'W 81°40'W 81°39.5'W 81°39'W 81°38.5'W 81°38'W 81°37.5'W 81°37'W 81°36.5'W 81°36'W



Legend

- Orange circle: Check Point
- Blue cross: Fire Aid Station
- Blue square: Command Post
- Blue circle: Incident Management Location Site
- Blue circle with 'W': Water Source
- Black dashed line: Boundary Line
- Black dashed line with 'X': Road Closure
- Black dashed line with 'X': Road
- Black dashed line with 'X': Stream
- Black dashed line with 'X': Contour Line

© 2016 Florida Green Team



Perimeters shown are based on the best available information at the time of map production.
 Latest intel collected Nov 29, 2016

Nov 29, 2016 1806 hrs
 Map Datum: NAD83 SP Meters
 Author: Florida Green Team