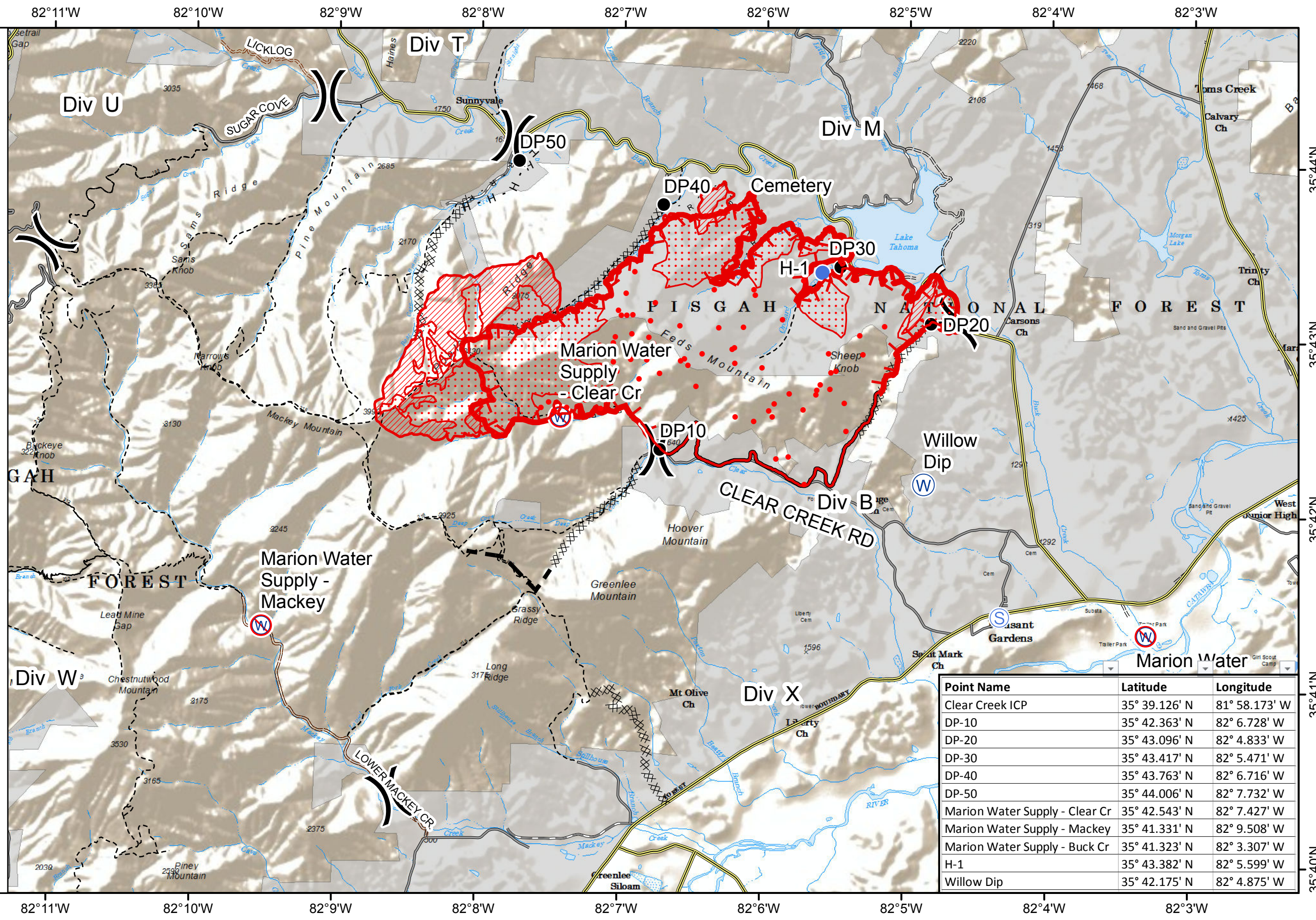
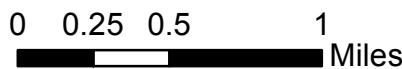


CLEAR CREEK FIRE
 NC-NCS-160054
AIR OPERATIONS
 11/24/2016
 Day

2,506 acres
 Approximate Perimeter
 as of 11/23/2016 @ 2056 hrs.

Legend

- 20161123_2056 ClearCreek_IsolatedHeat
- 20161123_2056 ClearCreek_ScatteredHeat
- 20161123_2056 ClearCreek_IntenseHeat
- 20161123_2056 ClearCreek_HeatPerimeter
- TFR
-) Division
- Drop Point
- Helispot
- W Water Source
- W Restricted Water Source
- XXXXXX Completed Dozer Line
- Completed Line
- - - Road as Completed Line
- Uncontrolled Fire Edge



Point Name	Latitude	Longitude
Clear Creek ICP	35° 39.126' N	81° 58.173' W
DP-10	35° 42.363' N	82° 6.728' W
DP-20	35° 43.096' N	82° 4.833' W
DP-30	35° 43.417' N	82° 5.471' W
DP-40	35° 43.763' N	82° 6.716' W
DP-50	35° 44.006' N	82° 7.732' W
Marion Water Supply - Clear Cr	35° 42.543' N	82° 7.427' W
Marion Water Supply - Mackey	35° 41.331' N	82° 9.508' W
Marion Water Supply - Buck Cr	35° 41.323' N	82° 3.307' W
H-1	35° 43.382' N	82° 5.599' W
Willow Dip	35° 42.175' N	82° 4.875' W