

Clear Creek Fire
NC-NCS-160054

Air Operations Map
11/25/2016
Day Shift



2,509 acres
Approximate Perimeter
as of 11/23/2016 @ 2056 hrs.

Legend

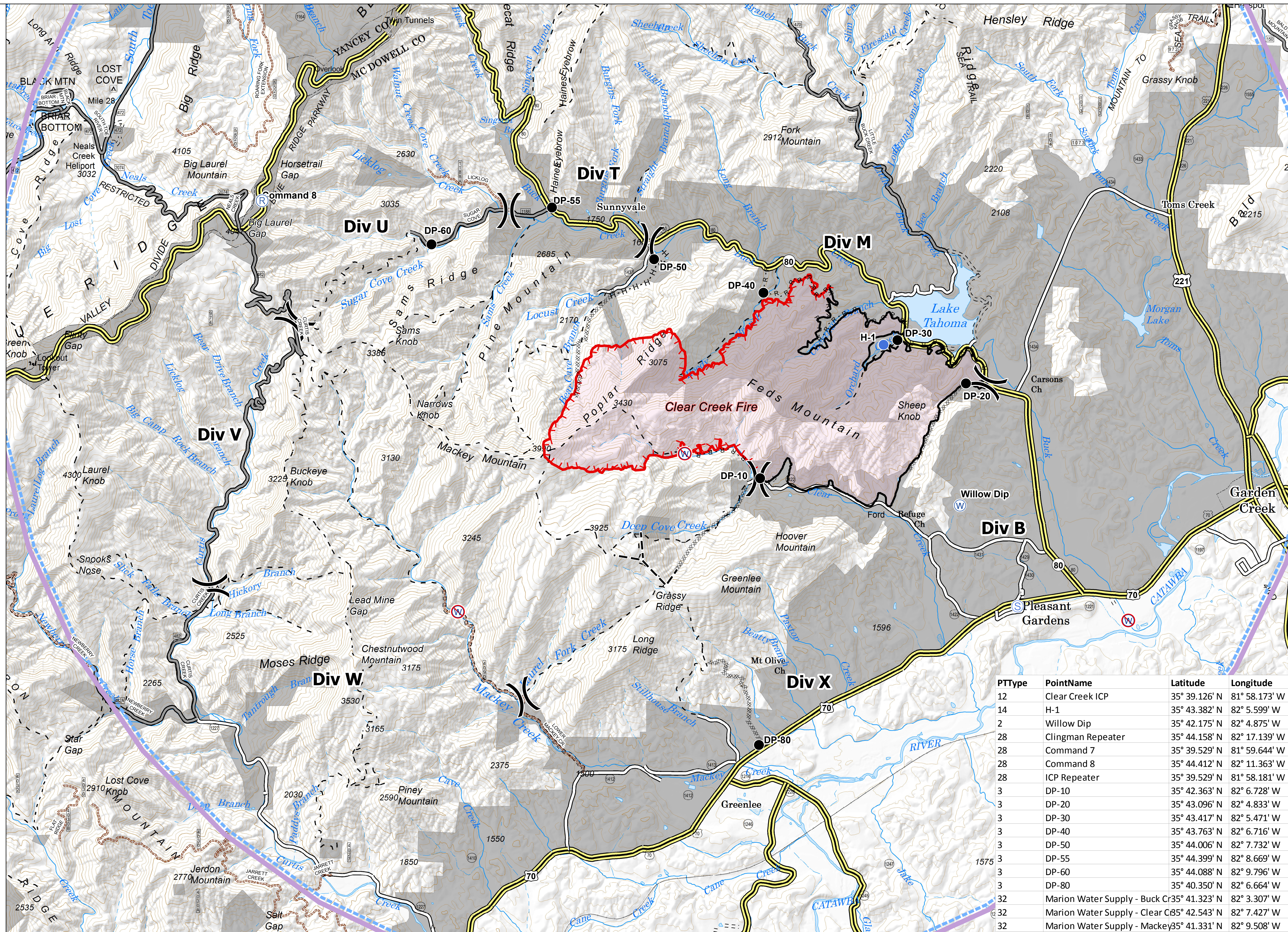
- () Division
- Drop Point
- Helispot
- Ⓡ Repeater
- Ⓢ Staging Area
- Ⓦ Water Source
- Ⓦ Restricted Water Source
- Uncontrolled Fire Edge
- Completed Line
- xxxxxx Completed Dozer Line
- H - H - Hand Line
- R - R - Road as Completed Line
- - - Planned Fire Line
- Private Land within the Forest Boundary
- TFR



80 ft contours
NAD 83 UTM 17



0 0.5 1 Miles



PTType	PointName	Latitude	Longitude
12	Clear Creek ICP	35° 39.126' N	81° 58.173' W
14	H-1	35° 43.382' N	82° 5.599' W
2	Willow Dip	35° 42.175' N	82° 4.875' W
28	Clingman Repeater	35° 44.158' N	82° 17.139' W
28	Command 7	35° 39.529' N	81° 59.644' W
28	Command 8	35° 44.412' N	82° 11.363' W
28	ICP Repeater	35° 39.529' N	81° 58.181' W
3	DP-10	35° 42.363' N	82° 6.728' W
3	DP-20	35° 43.096' N	82° 4.833' W
3	DP-30	35° 43.417' N	82° 5.471' W
3	DP-40	35° 43.763' N	82° 6.716' W
3	DP-50	35° 44.006' N	82° 7.732' W
3	DP-55	35° 44.399' N	82° 8.669' W
3	DP-60	35° 44.088' N	82° 9.796' W
3	DP-80	35° 40.350' N	82° 6.664' W
32	Marion Water Supply - Buck Cr35	41.323' N	82° 3.307' W
32	Marion Water Supply - Clear C85	42.543' N	82° 7.427' W
32	Marion Water Supply - Mackey35	41.331' N	82° 9.508' W