

Clear Creek Fire
NC-NCS-160054

Operations Map
11/29/2016
Day Shift



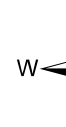
3,163 acres
Approximate Perimeter
as of 11/28/2016 @ 0039 hrs.

Legend

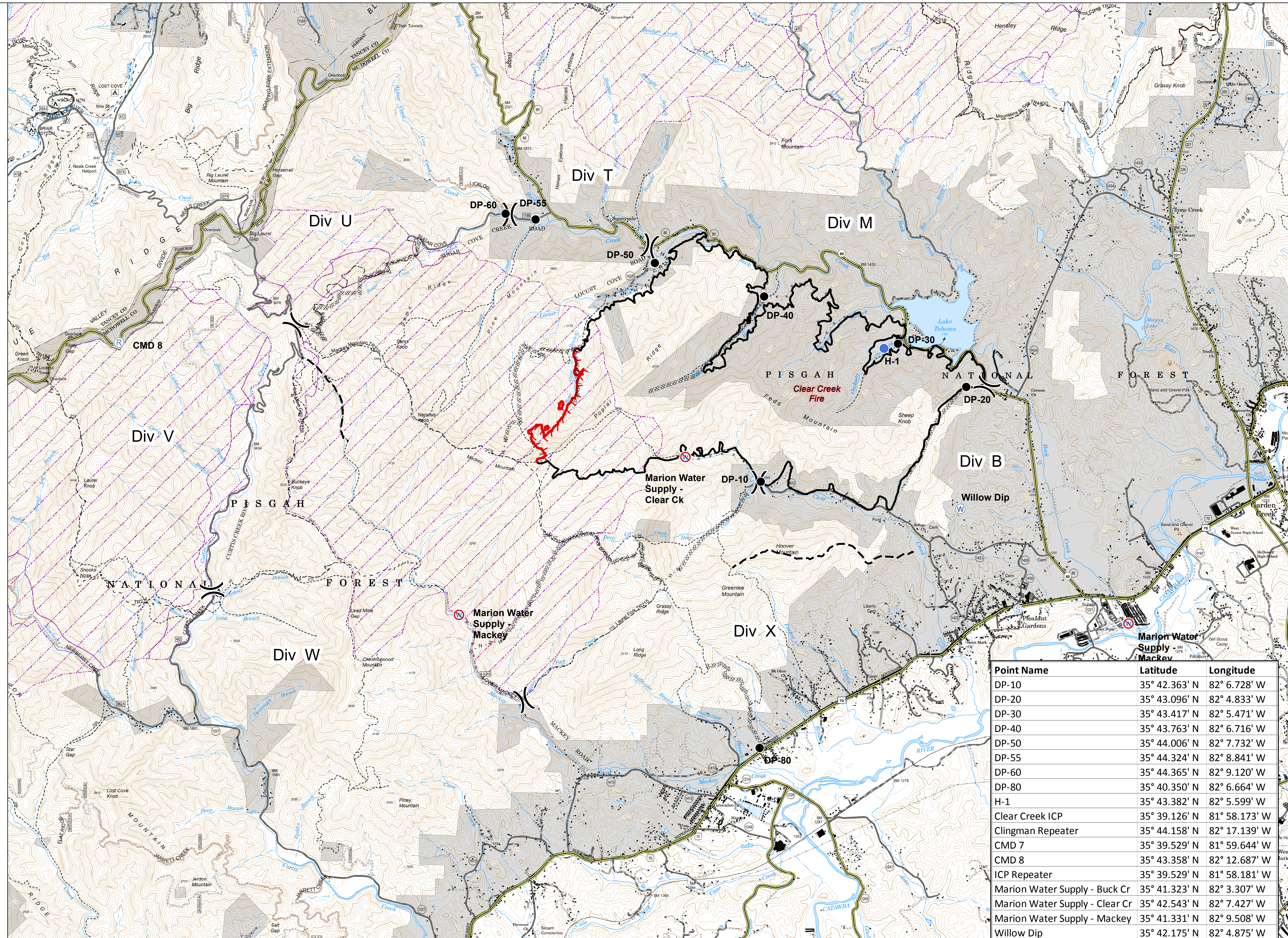
- (X) Division
- Drop Point
- Helispot
- Ⓡ Repeater
- Ⓢ Staging Area
- Ⓦ Water Source
- Ⓦ Restricted Water Source
- Uncontrolled Fire Edge
- Completed Line
- XXXXXX Completed Dozer Line
- H · H · Hand Line
- R · R · Road as Completed Line
- - - Planned Fire Line
- Released Roadless Area
- Private Land within the Forest Boundary



1:24,000
40 ft contours
NAD83 UTM 17



0 0.5 1 Miles



Point Name	Latitude	Longitude
DP-10	35° 42.363' N	82° 6.728' W
DP-20	35° 43.096' N	82° 4.833' W
DP-30	35° 43.417' N	82° 5.471' W
DP-40	35° 43.763' N	82° 6.716' W
DP-50	35° 44.006' N	82° 7.732' W
DP-55	35° 44.324' N	82° 8.841' W
DP-60	35° 44.365' N	82° 9.120' W
DP-80	35° 40.350' N	82° 6.664' W
H-1	35° 43.382' N	82° 5.599' W
Clear Creek ICP	35° 39.126' N	81° 58.173' W
Clingman Repeater	35° 44.158' N	82° 17.139' W
CMD 7	35° 39.529' N	81° 59.644' W
CMD 8	35° 43.358' N	82° 12.687' W
ICP Repeater	35° 39.529' N	81° 58.181' W
Marion Water Supply - Buck Cr	35° 41.323' N	82° 3.307' W
Marion Water Supply - Clear Cr	35° 42.543' N	82° 7.427' W
Marion Water Supply - Mackey	35° 41.331' N	82° 9.508' W
Willow Dip	35° 42.175' N	82° 4.875' W