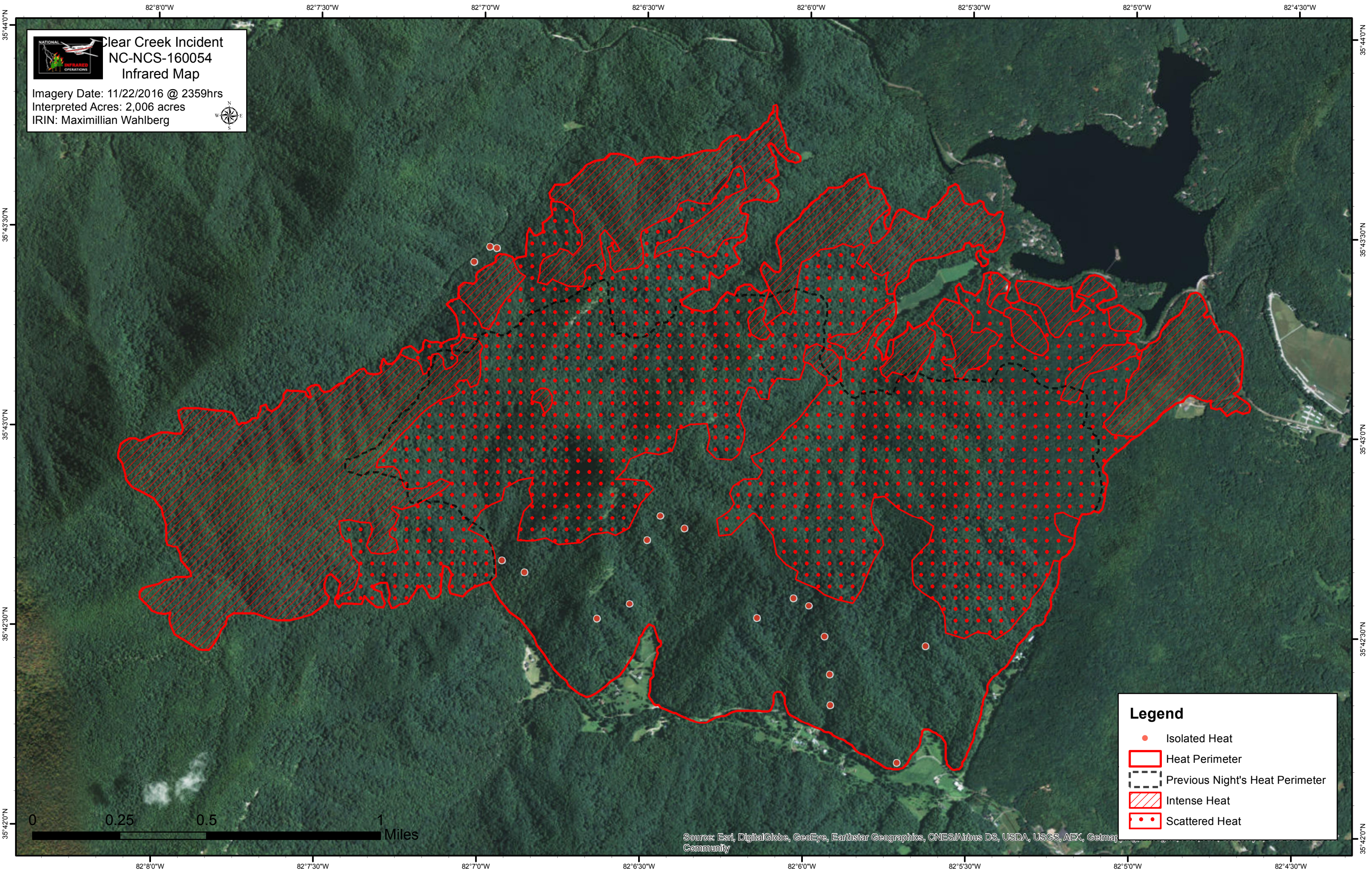




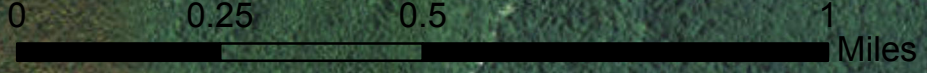
Clear Creek Incident
NC-NCS-160054
Infrared Map

Imagery Date: 11/22/2016 @ 2359hrs
 Interpreted Acres: 2,006 acres
 IRIN: Maximillian Wahlberg



Legend

- Isolated Heat
- Heat Perimeter
- Previous Night's Heat Perimeter
- Intense Heat
- Scattered Heat



Source: Esri, DigitalGlobe, GeoEye, Earthstar Geographics, CNES/Airbus DS, USDA, USGS, AEX, Getmap, Community