

82°9'0"W 82°8'30"W 82°8'0"W 82°7'30"W 82°7'0"W 82°6'30"W 82°6'0"W 82°5'30"W 82°5'0"W 82°4'30"W



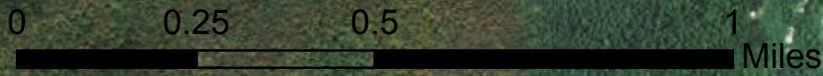
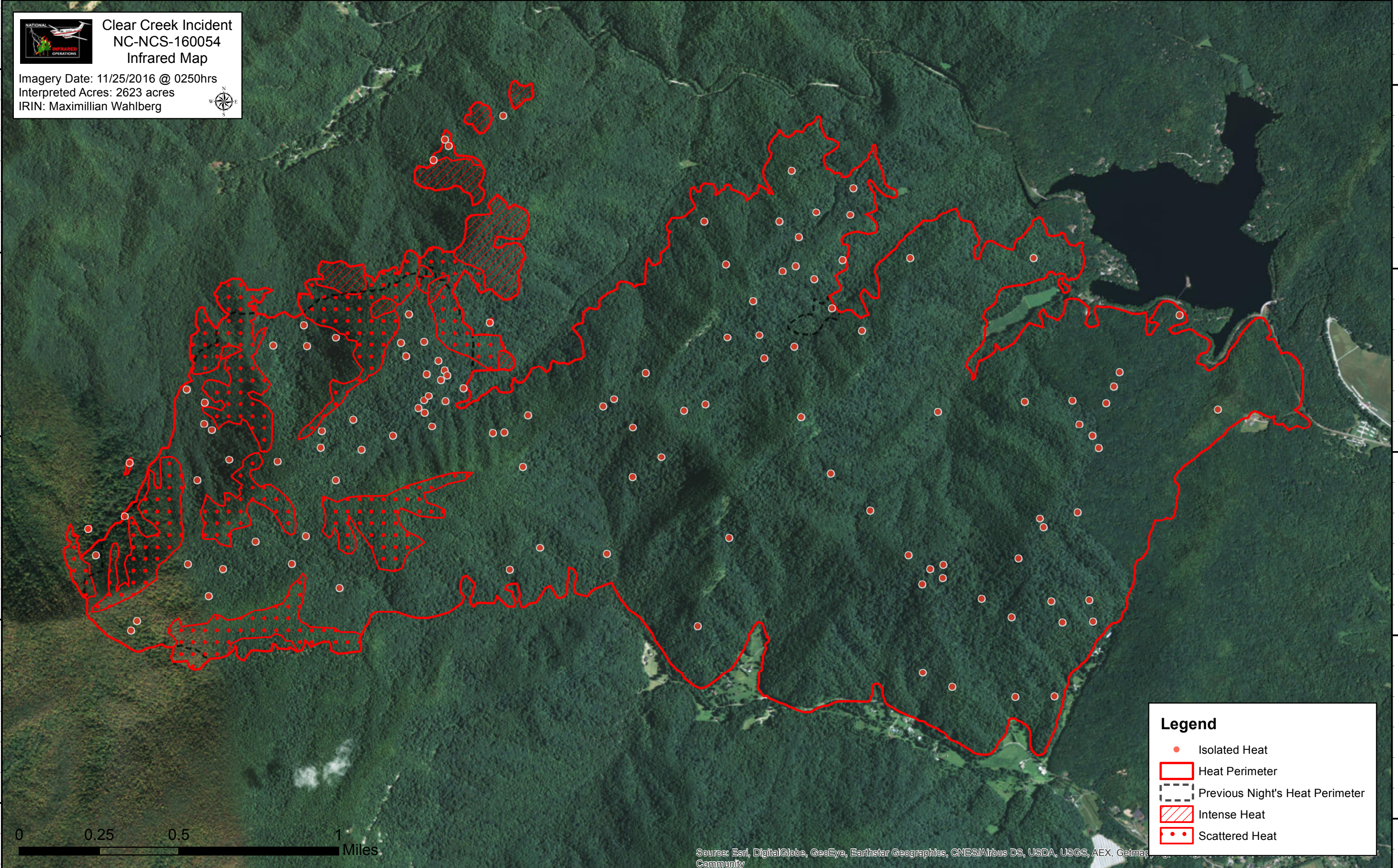
Clear Creek Incident NC-NCS-160054 Infrared Map

Imagery Date: 11/25/2016 @ 0250hrs
Interpreted Acres: 2623 acres
IRIN: Maximillian Wahlberg



35°44'0"N
35°43'30"N
35°43'0"N
35°42'30"N
35°42'0"N

35°44'0"N
35°43'30"N
35°43'0"N
35°42'30"N
35°42'0"N



Source: Esri, DigitalGlobe, GeoEye, Earthstar Geographics, CNES/Airbus DS, USDA, USGS, AEX, Getmap, Community

Legend

- Isolated Heat
- Heat Perimeter
- Previous Night's Heat Perimeter
- / / / / / Intense Heat
- ● ● ● ● Scattered Heat

82°8'30"W 82°8'0"W 82°7'30"W 82°7'0"W 82°6'30"W 82°6'0"W 82°5'30"W 82°5'0"W 82°4'30"W