


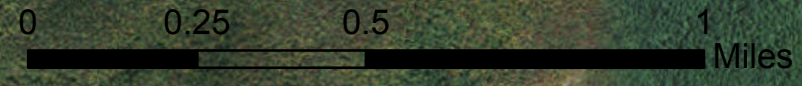
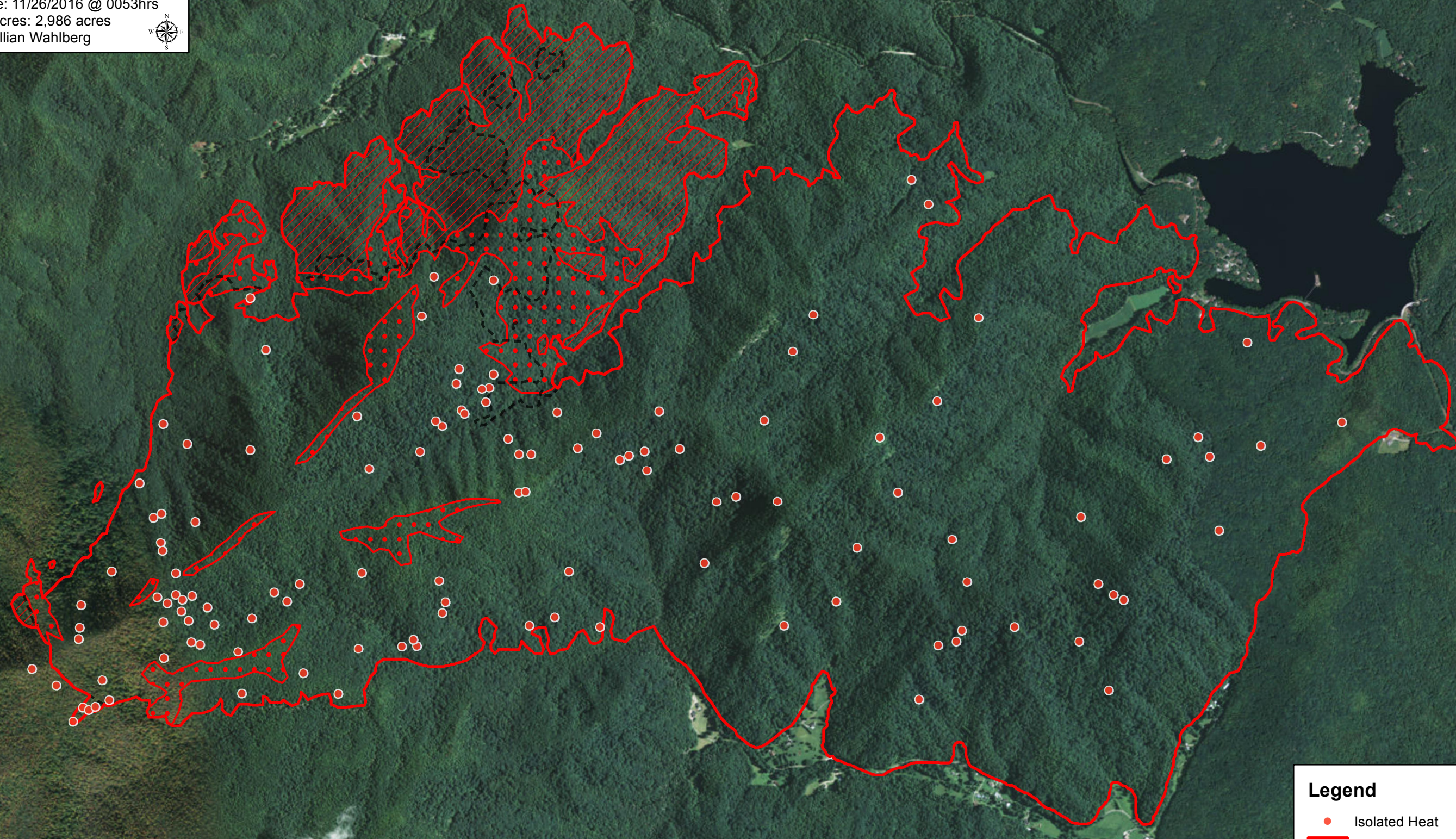
82°9'0"W 82°8'30"W 82°8'0"W 82°7'30"W 82°7'0"W 82°6'30"W 82°6'0"W 82°5'30"W 82°5'0"W 82°4'30"W

 **Clear Creek Incident**
NC-NCS-160054
Infrared Map
Imagery Date: 11/26/2016 @ 0053hrs
Interpreted Acres: 2,986 acres
IRIN: Maximillian Wahlberg








35°44'0"N
35°43'30"N
35°43'0"N
35°42'30"N
35°42'0"N

35°44'0"N
35°43'30"N
35°43'0"N
35°42'30"N
35°42'0"N



Legend

-  Isolated Heat
-  Heat Perimeter
-  Previous Night's Heat Perimeter
-  Intense Heat
-  Scattered Heat

Source: Esri, DigitalGlobe, GeoEye, Earthstar Geographics, CNES/Airbus DS, USDA, USGS, AEX, Getmap, Community

82°9'0"W 82°8'30"W 82°8'0"W 82°7'30"W 82°7'0"W 82°6'30"W 82°6'0"W 82°5'30"W 82°5'0"W 82°4'30"W